

MOSFETs





COMPANY OVERVIEW

DIODES INCORPORATED'S PRODUCTS ARE DESIGNED FOR HIGH PERFORMANCE ACROSS A WIDE RANGE OF EXISTING AND EMERGING APPLICATIONS

Diodes Incorporated is a leading global designer and manufacturer of discrete, analog, mixed-signal, and logic semiconductors.

We enable innovation by leveraging our broad product portfolio, company-owned operations, and leading-edge packaging technology to meet your needs.

Our broad-range of application-specific solutions, coupled with a worldwide network of engineering, testing, manufacturing, and customer service sites, positions us as a premier provider for high-volume, high-growth markets.

As part of its global footprint, Diodes Incorporated is focused on high-growth, high-volume markets such as Automotive, Communications, Computing, Consumer, and Industrial.

Diodes Incorporated's discrete, analog, mixed-signal and logic products provide our customers with leading-edge solutions for next generation systems.

Discrete products include bipolar transistors, MOSFETs, IGBTs, diodes, rectifiers, Super Barrier Rectifiers (SBR®), protection products and functional arrays.

Analog and mixed-signal products cover these main areas: power management ICs, LED drivers, standard linear, sensors, signal switching, signal integrity, connectivity and timing products.

Logic products includes single-gate, dual-gate and standard logic gates, as well as level translators, analog switches, registers and multiplexers.

SBR and PowerDI are registered trademarks of Diodes Incorporated.



ULTRA-HIGH PERFORMING MOSFETS

A FOCUS ON PRODUCT INNOVATION DRIVEN BY CUSTOMER REQUIREMENTS HAS RESULTED IN ULTRA-HIGH PERFORMING MOSFETS...

Encompassing N- and P-channels, the portfolio ranges from -450V to 800V packaged in single, dual, complementary and H-Bridge (Quad) configurations. These are offered in a wide range of package options, from the tiny DFN0604 (0.6mm by 0.4mm) to the thermally-efficient PowerDI® 1012S (TOLL) packages. With innovations in chip-scale packaging to enable the lowest $R_{DS(ON)}$ for a given footprint.

Embracing both industry-standard and differentiated products, the broad portfolio has expanded to over 1500 products, from small-signal to power MOSFETs. Diodes Incorporated utilizes emerging technologies that are uniquely suited for specific applications, such as using shield-gate technology to reduce conduction and switching losses, which is ideal for BLDC motor driving. Diodes' lateral MOSFETs (LD-MOS) feature industry-leading Figure of Merit (FOM), which enables greater efficiency in DC-DC buck converters.

The breadth of the Diodes' MOSFET portfolio enables designers to select a device that is optimized for their end application, ranging from consumer to industrial to automotive segments.

The Diodes portfolio is well suited for meeting the circuit requirements in:

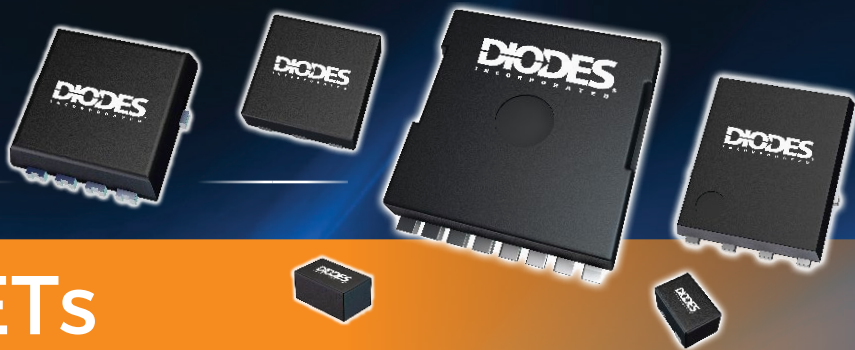
- DC-DC Conversion
- Motor Control
- LED Lighting
- Battery Protection
- Load Switching
- Power Supplies
- Battery Chargers
- Audio Circuits
- Power-Over-Ethernet

The majority of products in the Diodes MOSFET product portfolio are designed to meet the stringent requirements of AEC-Q101 reliability standard of the Automotive Electronic Council.

Many parts are also available as Automotive Compliant where they are all qualified to AEC-Q101, manufactured in facilities certified to the rigorous IATF 16949 standard, and capable of customer audit to VDA6.3. Furthermore, all in-house packaging utilizes an environmentally 'green' mold compound.

Diodes Incorporated's MOSFET product development strategy is focused on high growth market segments such as Automotive, LED Lighting, Ethernet, Smartphones, and the Internet of Things.





MOSFETs



INDEX

8V - 29V N-CHANNEL	4-5
8V - 29V P-CHANNEL	6-7
12V - 29V DUAL N-CHANNEL	8-9
12V - 29V DUAL P-CHANNEL	9-9
12V - 29V COMPLEMENTARY	10
30V N-CHANNEL	11-13
30V P-CHANNEL	14-15
30V DUAL N-CHANNEL	15-16
30V DUAL P-CHANNEL	16
30V COMPLEMENTARY	17
31V - 50V N-CHANNEL	18-19
31V - 50V P-CHANNEL	19
40V - 50V DUAL N-CHANNEL	20
40V - 60V DUAL P-CHANNEL	20
MOSFET PACKAGE EVOLUTION	21
35V - 60V COMPLEMENTARY	21
51V - 99V N-CHANNEL	22-25
51V - 99V P-CHANNEL	26
60V - 65V PLUS DUAL N-CHANNEL	27
100V PLUS N-CHANNEL	28-30
100V PLUS P-CHANNEL	31
100V PLUS DUAL N-CHANNEL	31
100V COMPLEMENTARY	32
30V - 100V H-BRIDGE	32
PROTECTED MOSFETS (IntelliFET®)	34-35

8V – 29V N-CHANNEL



Part Number	ESD Diode	V _{DS} (V)	V _{GS} (±V)	I _{DS} (A)		R _{DS(ON)} (mΩ max) at V _{GS} =				V _{GS} (th) (V)		C _{ISS} typ (pF)	Q _G typ @ V _{GS} = 4.5V (nC)	Q _G typ @ V _{GS} = 10V (nC)	Automotive Version Avail.	Package	
				@T _A =25°C	@T _A =25°C	10V	4.5V	2.5V	1.8V	Min.	Max.						
DMN1054UCB4	N	8	5	4	1.34	-	-	50	65	-	0.7	-	-	-	-	-	X1-WLB0808-4
DMN1150UFB	Y	12	6	1.4	0.5	-	150	185	210	0.35	1	110	1.5	-	-	-	X1-DFN1006-3
DMN1260UFA	Y	12	8	0.5	0.36	-	366	520	950	0.4	1	65	0.96	-	-	-	X2-DFN0806-3
DMN1053UCP4	N	12	8	4	1.34	-	42	50	65	-	0.7	-	7.2	-	-	-	X3-DSN0808-4
DMN1045UFR4	Y	12	8	3.2	0.5	-	45	64	85	0.4	1	390	4.8	-	-	-	X2-DFN1010-3
DMN1032UCB4	N	12	8	4.8	1.16	-	26	29	38	0.4	1.2	325	3.2	-	-	-	U-WLB1010-4
DMN1023UCB4	N	12	8	5.1	1.2	-	23	29	42	-	1.2	-	2.3	-	-	-	U-WLB1010-4 (Type C)
DMN1017UCP3	N	12	8	7.5	1.47	-	-	21	30	0.4	1	1002	10.5	-	-	-	X3-DSN1010-3
DMN1016UCB6	N	12	8	6.6	1.47	-	20	23	-	-	1	-	-	-	-	-	U-WLB1510-6
DMN1001UCA10	Y	12	8	20	2.4	-	3.75 @3.8V	6.9	-	-	1.4	-	29 @4V	-	-	-	X2-TSN1820-10
DMN1014UFD	N	12	8	8	1.7	-	16	25	-	-	1	-	6.4	-	-	-	U-DFN2020-6 (Type F)
DMN1019UFE	Y	12	8	11	2.17	-	10	12	14	0.35	0.8	2480	27.3	50.6 @8V	-	-	U-DFN2020-6 (Type E)
DMN1008UFD	N	12	8	12.2	1.7	-	8	12.5	-	-	1	-	13.6	23.4 @8V	-	-	U-DFN2020-6 (Type F)
DMN1004UFD	Y	12	8	15	2.1	-	4.8	7	-	-	1	-	26	47	-	-	U-DFN2020-6 (Type F)
DMN1019UVT	Y	12	8	10.7	1.73	-	10	12	14	-	0.8	-	28	50.4 @8V	-	-	TSOT26
DMN1019USN	Y	12	8	9.3	1.2	-	10	12	14	0.35	0.8	2480	27.3	50.6 @8V	-	-	SC59
DMN1004UFV	Y	12	8	70*	1.9	-	3.8	5.1	-	-	1	-	26	47 @8V	-	-	PowerDI3333-8 (Type UX)
DMN15M3UCA6	Y	12	12	16.5	2.4	-	6.2 @3.8V	8	-	-	1.3	-	35.2	-	-	-	X3-DSN2718-6
DMN12M3UCA6	Y	12	12	24.4	2.47	-	2.85 @3.8V	6.1	-	-	1.4	-	45.7 @4V	-	-	-	X4-DSN3118-6
DMG1012T	Y	20	6	0.63	0.28	-	400	500	700	0.5	1	61	0.74	-	-	Y	SOT523
DMG1012UW	Y	20	6	1	0.29	-	450	600	750	0.5	1	61	0.74	-	-	-	SOT323
DMN2991UFO	Y	20	8	0.54	0.44	-	990	1200	1800	-	1	21.5	0.35	-	-	-	X2-DFN0604-3
DMN2990UFO	Y	20	8	0.75	0.84	-	990	1200	1800	0.4	1	31	0.41	-	-	-	X2-DFN0604-3
DMN2990UFZ	Y	20	8	0.25	0.32	-	990	1200	1800	0.4	1	28	0.5	-	-	-	X2-DFN0606-3
DMN2991UFZ	Y	20	8	0.55	0.53	-	990	1200	1800	0.4	1	21.5	0.35	-	-	-	X2-DFN0606-3
DMN2990UFA	Y	20	8	0.51	0.4	-	990	1200	1800	0.4	1	28	0.5	-	-	-	X2-DFN0806-3
DMN2550UFA	Y	20	8	0.6	0.36	-	450	550	750	0.4	1	54	0.88	-	-	-	X2-DFN0806-3
DMN2990UFB	Y	20	8	0.78	0.92	-	900	1200	1800	-	1	-	0.41	-	-	-	X1-DFN1006-3
DMN2501UFB4	Y	20	8	1	1.2	-	400	500	700	0.5	1	88	1.1	2	-	-	X2-DFN1006-3
DMN2320UFB4	Y	20	8	1	1.07	-	320	500	1000	-	0.95	-	0.89	-	-	-	X2-DFN1006-3
DMN2300UFB	Y	20	8	1.3	0.47	-	175	240	360	0.45	0.95	70	1.6	-	-	-	X1-DFN1006-3
DMN2300UFB4	Y	20	8	1.3	0.5	-	175	240	360	0.45	0.95	70	1.6	-	-	-	X2-DFN1006-3
DMN2250UFB	Y	20	8	1.4	0.5	-	170	230	250	0.35	1	100	1.4	3.1	-	-	X1-DFN1006-3
DMN2080UCB4	Y	20	8	4	1.25	-	56	68	90	-	1	-	7.4	-	-	-	X2-WLB0808-4 (Type B)
DMN2044UCB4	N	20	8	4.5	1.18	-	40	50	56	-	0.9	-	13.1	23.2 @8V	-	-	U-WLB1010-4 (Type B)
DMN2004TK	Y	20	8	0.54	0.15	-	550	700	900	0.5	1	87	-	-	-	-	SOT523
DMN2300UFD	Y	20	8	1.7	0.96	-	200	260	400	0.45	0.95	70	1.6	-	-	-	X1-DFN1212-3
DMN2004WK	Y	20	8	0.54	0.2	-	550	700	900	0.5	1	87	-	-	-	Y	SOT323
DMN2075UDW	N	20	8	2.8	0.58	-	48	59	70	0.4	1	594	7	-	-	-	SOT363
DMN2055UW	N	20	8	3.1	0.65	-	46	53	-	-	1	400	4.3	-	-	-	SOT323
DMN2004K	Y	20	8	0.63	0.35	-	550	700	900	0.5	1	87	0.9	-	-	-	SOT23
DMN2300U	Y	20	8	1.4	0.55	-	175	240	360	0.45	0.95	70	1.6	-	-	-	SOT23
DMN2310U	Y	20	8	1.6	0.68	-	175	240	360	-	0.95	-	0.7	-	-	-	SOT23
ZXMN2B01F	N	20	8	2.1	0.625	-	100	150	200	0.4	1	370	4.8	-	-	-	SOT23
ZXMN2B14FH	N	20	8	3.5	1	-	55	75	100	0.4	1	872	11	-	-	-	SOT23
DMN2056U	N	20	8	4	0.94	-	38	45	85	0.4	1	339	4.3	-	-	-	SOT23
DMG3414U	N	20	8	4.2	0.78	-	25	29	37	0.5	0.9	830	9.6	-	-	Y	SOT23
DMN2075U	N	20	8	4.2	0.8	-	38	45	-	-	1	-	7	-	-	-	SOT23
DMN2022UFD	Y	20	8	7.9	2.03	-	22	26	36	0.5	1	907	9.8	18 @8V	-	-	U-DFN2020-6 (Type F)
DMN2028UFD	Y	20	8	7.9	2.03	-	25	29	39	-	1	-	9.8	18 @8V	-	-	U-DFN2020-6 (Type F)
DMN2013UFDE	Y	20	8	10.5	2.03	-	11	13	30	0.5	1.1	2453	14.3	25.8 @8V	-	-	U-DFN2020-6 (Type E)
DMN2028UVT	N	20	8	6.2	1.6	-	24	32	-	-	1.5	-	8.3	-	-	-	TSOT26
DMN2040UVT	N	20	8	6.7	1.6	-	24	32	-	-	1.5	-	7.5	-	-	-	TSOT26
DMN2112SN	Y	20	8	1.2	0.5	-	100	140	250 @1.5V	0.5	1.2	220	-	-	-	-	SC59
DMN2100UDM	Y	20	8	4	1.5	-	55	70	90	0.6	1	555	8.8	-	-	-	SOT26
ZXMN2B03E6	N	20	8	4.3	1.1	-	40	55	75	0.4	1	1160	14.5	-	-	-	SOT26

* @TC =25°C

8V – 29V N-CHANNEL

Part Number	ESD Diode	V _{DS}	V _{GS}	I _{DS} (A)	P _D (W)	R _{DS(ON)} (mΩ max) at V _{GS} =				V _{GS} (th) (V)		C _{ISS} typ (pF)	Q _G typ @ V _{GS} = 4.5V (nC)	Q _G typ @ V _{GS} = 10V (nC)	Automotive Version Avail.	Package
		(V)	(±V)	@T _A =25°C	@T _A =25°C	10V	4.5V	2.5V	1.8V	Min.	Max.					
DMN26D0UFB4	Y	20	10	0.24	0.35	-	3000	4000	6000	0.45	1.05	14.5	-	-	-	X2-DFNI006-3
DMN2005LP4K	Y	20	10	0.3	0.4	-	1500	1700	3500	0.53	0.9	37	-	-	-	X2-DFNI006-3
DMN2005LPK	Y	20	10	0.44	0.45	-	1500	1700	3500	0.53	1.2	37	-	-	-	X1-DFNI006-3
DMN26D0UT	Y	20	10	0.23	0.3	-	3000	4000	6000	0.5	1	14.5	-	-	-	SOT523
DMN2020UFCL	Y	20	10	9	0.61	-	14	20	26	0.4	0.9	1788	21.5	49	-	X1-DFNI616-6 (Type E)
DMN2005K	Y	20	10	0.3	0.35	-	-	1700	3500	0.53	0.9	37	-	-	-	SOT23
DMN2024U	Y	20	10	6.8	1.4	-	25	29	36	-	0.9	-	7.1	-	-	SOT23
DMN2025UFDF	Y	20	10	6.5	1.6	-	25	31	60	-	1	-	5.9	12.3	-	U-DFN2020-6 (Type F)
DMN2024UFDF	Y	20	10	7.1	1.67	-	22	26	36	0.5	1	647	7.1	13.5	-	U-DFN2020-6 (Type F)
DMN2026UVT	N	20	10	6.2	1.75	-	24	32	-	-	1.5	-	10	18.4 @8V	-	TSOT26
DMN2029UVT	N	20	10	6.8	1.7	-	24	32	-	-	1.5	-	7.1	-	-	TSOT26
DMN2400UFB	Y	20	12	0.75	0.47	-	550	750	900	0.5	0.9	38	0.5	-	-	X1-DFNI006-3
DMN21D2UFB	Y	20	12	0.76	0.9	-	990	1200	2400	0.4	1	29	0.47	0.93	-	X1-DFNI006-3
DMN2450UFB4	Y	20	12	1	0.9	-	400	500	700	0.5	0.9	56	0.6	-	-	X2-DFNI006-3
DMN2450UFD	Y	20	12	0.9	0.89	-	600	800	1000	0.45	1	52	0.7	-	-	X1-DFNI212-3
DMN2120UFCL	Y	20	12	1.8	1.16	-	100	140	200	-	1	-	1.4	2.8	-	U-DFNI616-6
DMN2053UW	N	20	12	2.9	0.7	-	56	65	93	-	1	-	3.6	-	-	SOT323
DMN2058UW	N	20	12	3.5	0.7	-	45	60	91	0.4	1.2	281	3.6	-	-	SOT323
ZXM61N02F	N	20	12	1.7	0.625	-	180	240 @2.7V	-	0.7	-	170	2.7	-	-	SOT23
ZXMN2A01F	N	20	12	1.9	0.625	-	120	225	-	0.7	-	310	-	3	-	SOT23
DMN2230U	N	20	12	2	0.6	-	110	145	230	0.5	1	188	2.3	5	Y	SOT23
DMG2302UK	Y	20	12	2.8	1.1	-	90	120	-	-	1	-	1.4	2.8	Y	SOT23
ZXMN2A14F	N	20	12	3.4	1	-	60	110	-	0.7	-	544	6.6	-	-	SOT23
ZXMN2F34FH	N	20	12	3.4	0.95	-	60	120	-	0.5	1.5	277	2.8	-	-	SOT23
DMN2046U	Y	20	12	3.4	1.26	-	72	110	-	0.4	1.4	292	3.8	-	-	SOT23
ZXMN2F30FH	N	20	12	4.1	0.96	-	45	65	-	0.6	1.5	452	4.8	-	Y	SOT23
DMN2058U	N	20	12	4.6	1.13	-	40	60	91	0.4	1.2	281	3.6	7.7	-	SOT23
DMN2050L	N	20	12	5.9	1.4	-	29	50	-	0.45	1.4	532	6.7	-	-	SOT23
DMN2040U	N	20	12	6	1.36	-	25	33	-	0.5	1.2	667	7.5	-	-	SOT23
DMN2053U	N	20	12	6.5	1.3	29	35	-	-	0.5	1.2	414	4.6	-	-	SOT23
DMN2015UFDE	Y	20	12	10.5	2.03	-	11.6	15	30	0.5	1.1	1779	19.7	45.6	-	U-DFN2020-6 (Type E)
DMN2015UFDF	N	20	12	11.6	1.8	-	9	15	30	-	1.2	-	19.3	42.3	-	U-DFN2020-6 (Type F)
DMN2011UFDE	Y	20	12	11.7	1.97	-	9.5	11	20	0.4	1	2248	24	56	-	U-DFN2020-6 (Type E)
DMN2011UFDF	Y	20	12	11.7	2.1	-	9.5	11	20	-	1	-	24	56	-	U-DFN2020-6 (Type F)
DMN2114SN	Y	20	12	1.2	0.5	-	100	160	-	0.7	1.4	180	-	-	-	SC59
DMN2020LSN	Y	20	12	6.9	0.61	-	20	28	-	0.5	1.5	1149	11.6	-	-	SC59
ZXMN2A01E6	N	20	12	2.5	1.1	-	120	225	-	0.7	-	310	3.1	-	-	SOT26
ZXMN2A03E6	N	20	12	4.6	1.7	-	55	100	-	0.7	-	837	8.2	-	-	SOT26
DMN22M5UFG	N	20	12	27*	2.2	-	2.5	3.5	-	-	1.3	-	53	99	-	PowerDI3333-8
DMN2005UFG	N	20	12	50*	2.27	-	4.6	8.7	-	0.4	1.2	6495	68.8	164	Y	PowerDI3333-8
DMN2011UTS	Y	20	12	9	1.3	-	11	13	25	-	1	-	24	56	-	TSSOP-8
DMN2028USS	Y	20	12	9.8	2.8	-	20	28	-	0.6	1.3	1000	11.6	28.5	-	SO-8
ZXMN2A02N8	N	20	12	10.2	2.5	-	20	40	-	-	-	-	18.9	-	-	SO-8
DMN2027USS	N	20	12	10.5	2	-	12.5	19	-	0.7	1.3	1000	11.6	-	-	SO-8
DMN2009LSS	N	20	12	12	2	8	9	12	-	-	1.2	-	28.9	58.3	-	SO-8
DMN2009USS	N	20	12	12.1	2	-	9	12	-	0.5	1.2	1706	16	34	-	SO-8
DMN2005UPS	N	20	12	20	3	-	4.6	8.7	-	-	1.2	-	60	142	-	PowerDI5060-8
DMN2027UPS	N	20	12	36	1.9	-	12.5	19	-	-	1.3	-	11.6	-	-	PowerDI5060-8
DMT2004UFDF	N	24	12	14.1	1.8	6	7.2	12.5	-	-	1.45	-	29.6	53.7	-	U-DFN2020-6 (Type F)
DMT2004UFG	N	24	12	70*	2.3	5	6.5	10	-	-	1.45	-	29.6	53.7	-	PowerDI3333-8
DMT2004UFV	N	24	12	70*	2.3	5	6.5	10	-	-	1.45	-	29.6	53.7	-	PowerDI3333-8 (Type UX)
DMT2004UPS	N	24	12	80*	3	5	6.5	10	-	-	1.45	-	29.6	53.7	-	PowerDI5060-8
DMN25D0UFA	Y	25	8	0.32	0.63	-	4000	5000	-	0.6	1.2	27.9	0.36	-	-	X2-DFN0806-3
DMN2600UFB	Y	25	8	1.3	0.54	-	350	450	600	0.45	1	75	0.85	-	-	X1-DFNI006-3
DMG301NU	Y	25	8	0.26	0.4	-	4000	5000	-	0.7	1.1	27.9	0.36	-	-	SOT23
DMN3150LW	N	28	12	1.6	0.35	-	88	138	-	0.62	1.4	300	-	-	-	SOT323

* @TC = 25°C

8V – 29V P-CHANNEL

Part Number	ESD Diode	V _{DS}	V _{GS}	I _{DS} (A)	P _D (W)	R _{DS(ON)} (mΩ max) at V _{GS} =				V _{GS} (th) (V)		C _{ISS} typ (pF)	Q _C typ @ V _{GS} = 4.5V (nC)	Q _C typ @ V _{GS} = 10V (nC)	Automotive Version Avail.	175°C Rated	Package
		(V)	(±V)	@T _A =25°C	@T _A =25°C	10V	4.5V	2.5V	1.8V	Min.	Max.						
DMP1011UCB9	Y	8	6	10	1.57	-	10	14	-	-	1.1	-	8.1	-	-	-	U-WLB1515-9 (Type B)
DMP1007UCB9	Y	8	6	13.2	1.53	-	5.7	9.1	9.1	0.4	1.1	900	8.2	-	-	-	U-WLB1515-9
DMP1008UCB9	Y	8	6	13.2	1.53	-	5.7	9.1	-	-	1.1	-	8.2	-	-	-	U-WLB1515-9
DMP1008UCA9	Y	8	6	16	2.2	-	5.7	9.1	9.1	0.4	1.1	952	9.5	-	-	-	X2-DSN1515-9
DMP1070UCA3	Y	12	6	3.6	1.36	-	70	100	150	0.4	0.95	147	1.45	-	-	-	X4-DSN0607-3
DMP1096UCB4	Y	12	6	2.6	1.6	-	102	116	-	0.4	1	251	3.7	-	-	-	U-WLB1010-4
DMP1080UCB4	Y	12	6	3.3	1.6	-	80	93	-	0.4	1	213	2.5	-	-	-	U-WLB1010-4
DMP1081UCB4	Y	12	6	3.3	1.59	-	80	100	-	-	0.65	-	213	-	-	-	U-WLB1010-4
DMP1018UCB9	Y	12	6	7.6	1.8	-	18	22	-	0.4	1.3	457	4.9	-	-	-	U-WLB1515-9
DMP1011FV	Y	12	6	19	2.16	-	11.7	18.6	-	-	1.2	-	7.1	-	-	-	PowerDI3333-8 (Type UX)
DMP1555UFA	Y	12	8	0.2	0.36	-	800	1100	3000	0.4	1	60	0.84	-	-	-	X2-DFN0806-3
DMP1100UCB4	Y	12	8	3.2	1.1	-	83	96	150	-	0.8	-	9	-	-	-	X2-WLB0808-4
DMP1045UCB4	Y	12	8	4.8	1.75	-	50	65	100	-	1	-	6.1	-	-	-	X2-WLB0808-4
DMP1200UFR4	Y	12	8	2	1.26	-	100	160	200	0.35	1	510	5.8	-	-	-	X2-DFN1010-3
DMP1245UFL	Y	12	8	6.6	1.7	-	29	45	60	0.3	0.95	1600	16.1	-	-	-	X1-DFN1616-6 (Type E)
DMP1055USW	Y	12	8	3.8	1.03	-	48	59	80	-	1	-	13	-	-	-	SOT363
DMP1045UFY4	Y	12	8	5.5	1.7	-	33	45	75	0.3	1	1400	14.8	-	-	-	X2-DFN2015-3
DMP1045U	Y	12	8	5.2	1.3	-	31	45	75	0.3	1	1400	15.8	-	Y	-	SOT23
DMP1022UFDF	Y	12	8	9.5	2.1	-	15.3	19	26.5	0.35	0.8	2712	28.6	-	-	-	U-DFN2020-6 (Type F)
DMP1009UFDF	N	12	8	11	2	-	11	19	30	-	1	-	26	-	Y	-	U-DFN2020-6 (Type F)
DMP1012UFDF	N	12	8	12.6	2.11	-	15	30	40	-	0.9	-	19.5	-	-	-	U-DFN2020-6 (Type F)
DMP1005UFDF	Y	12	8	12.8	2.1	-	8.5	12	18.5	0.3	1	2475	28	-	-	-	U-DFN2020-6 (Type F)
DMP1022UWS	Y	12	8	7.2	1.4	-	18	22	28	-	1	-	27	-	-	-	V-DFN3020-8
DMP1012USS	N	12	8	8.5	1.6	-	15	30	40	-	1	-	19.5	-	-	-	SO-8
DMPH1006UPS	N	12	8	80*	3.2	-	6	8	-	-	1	6334	72	124 @8V	Y	Y	PowerDI5060-8
DMP2047UCB4	Y	20	6	4.1	1.6	-	47	60	-	0.4	1.2	218	2.3	-	-	-	U-WLB1010-4
DMP2042UCB4	N	20	6	4.6	1.4	-	45	65	-	-	1.2	-	2.5	-	-	-	U-WLB1010-4 (Type C)
DMG1013T	Y	20	6	0.46	0.27	-	700	900	1300	0.5	1	62	0.58	-	Y	-	SOT523
DMP2033UCB9	Y	20	6	5.8	1.8	-	33	45	65	0.4	1.1	382	5.4	-	-	-	U-WLB1515-9
DMP2900UW	N	20	6	0.6	0.5	-	750	1050	1500	-	1	-	0.7	-	-	-	SOT323
DMG1013UW	Y	20	6	0.82	0.31	-	750	1050	1500	0.5	1	62	0.62	-	Y	-	SOT323
DMP22D5UFO	Y	20	8	0.34	0.77	-	1900	2400	3400	0.4	1	17	0.3	-	-	-	X2-DFN0604-3
DMP22D4UFO	Y	20	8	0.53	0.82	-	1900	2400	3400	0.4	1	28.7	0.4	-	-	-	X2-DFN0604-3
DMP21D2UFA	Y	20	8	0.33	0.36	-	1000	1200	1600	0.3	1	55	0.8	-	-	-	X2-DFN0806-3
DMP22D4UFA	Y	20	8	0.33	0.4	-	1900	2400	3400	0.4	1	29	0.4	-	-	-	X2-DFN0806-3
DMP21D6UFB4	Y	20	8	0.58	0.98	-	1000	1500	2000	-	1	-	0.5	0.8 @8V	-	-	X2-DFN1006-3
DMP21D5UFB4	Y	20	8	0.7	0.95	-	1000	1500	2000	0.5	1	46	0.5	-	-	-	X2-DFN1006-3
DMP21D0UFB	Y	20	8	1.17	0.99	-	495	690	960	0.45	1	76.5	1	-	-	-	X1-DFN1006-3
DMP21D0UFB4	Y	20	8	1.17	0.99	-	495	690	960	0.45	1	76.5	1	-	-	-	X2-DFN1006-3
DMP2004TK	Y	20	8	0.43	0.23	-	1100	1600	2400	0.5	1	95	-	-	-	-	SOT523
DMP22D6UT	Y	20	8	0.43	0.15	-	1100	1600	2600	0.5	1	95	-	-	-	-	SOT523
DMP21D0UT	Y	20	8	0.65	0.33	-	495	690	960	0.45	1.2	76.5	1	-	-	-	SOT523
DMP21D6UFD	Y	20	8	0.6	0.8	-	1000	1500	2000	0.5	1	46.1	0.5	-	-	-	X1-DFN1212-3
DMP21D0UFD	Y	20	8	1.14	0.93	-	495	730	960	0.45	1.2	76.5	1	-	-	-	X1-DFN1212-3
DMP2070UCB6	N	20	8	3.5	1.47	-	70	90	110	0.4	1	210	2.9	-	-	-	U-WLB1510-6
DMP2035UFCL	Y	20	8	6.6	1.6	-	24	31	45	-	1	-	15.4	29 @8V	-	-	U-DFN1616-6 (Type K)
DMP2004WK	Y	20	8	0.4	0.25	-	900	1400	2000	0.5	1	95	-	-	-	-	SOT323
DMP2069UFY4	Y	20	8	2.5	0.53	-	54	69	90	0.3	1	214	9.1	-	-	-	X2-DFN2015-3
DMP2045UFY4	N	20	8	4.7	1.49	-	45	58	90	0.3	1	634	6.8	-	-	-	X2-DFN2015-3
DMP2004K	Y	20	8	0.6	0.55	-	900	1400	2000	0.5	1	95	-	-	-	-	SOT23
DMG2301U	N	20	8	2.7	0.8	-	80	110	-	-	1	-	6.5	-	-	-	SOT23
DMG3413L	N	20	8	3	1.3	-	95	130	190	0.6	1.3	857	9	-	-	-	SOT23
DMG2301L	N	20	8	3	1.5	-	120	150	-	-	1.2	476	5.5	-	-	-	SOT23
DMP2120U	N	20	8	3.8	1.3	-	62	90	150	0.4	1	487	6.3	-	-	-	SOT23
DMG2305UX	N	20	8	4.2	1.4	-	52	100	200	0.5	0.9	820	10.2	-	Y	-	SOT23
DMP2305U	N	20	8	4.2	1.4	-	60	90	113	0.5	0.9	800	7.6	-	-	-	SOT23
DMP2045U	Y	20	8	4.3	1.2	-	45	58	90	0.3	1	634	6.8	-	Y	-	SOT23
DMP2090UFDB	Y	20	8	3.2	1.39	-	90	120	-	-	1	-	6.8	-	-	-	U-DFN2020-6 (Type B)
DMP2035UFDF	Y	20	8	6.9	2.03	-	29	39	60	-	1	-	20.5	-	-	-	U-DFN2020-6 (Type F)
DMP2023UFDF	N	20	8	7.6	2.1	-	27	32	50	0.4	1	2000	27	-	-	-	U-DFN2020-6 (Type F)

* @TC = 25°C

8V – 29V P-CHANNEL



Part Number	ESD Diode	V _{DS}	V _{GS}	I _{DS} (A)	P _D (W)	R _{DS(ON)} (mΩ max) at V _{GS} =				V _{GS} (th) (V)		C _{ISS} typ (pF)	Q _G typ @ V _{GS} = 4.5V (nC)	Q _G typ @ V _{GS} = 10V (nC)	Automotive Version Avail.	T _{75°C} Rated	Package
		(V)	(±V)	@T _A =25°C	@T _A =25°C	10V	4.5V	2.5V	1.8V	Min.	Max.						
DMP2021UFDF	Y	20	8	9	2.1	-	16	22	40	0.35	1	2950	34	59 @8V	-	-	U-DFN2020-6 (Type F)
DMP2075UVT	N	20	8	3.8	1.6	-	75	137	-	-	1	-	8.8	-	-	-	TSOT26
DMP2033UVT	N	20	8	4.2	1.7	-	65	100	200	0.5	0.9	900	10.4	-	-	-	TSOT26
DMP2067LVT	N	20	8	4.2	1.6	-	45	65	-	-	1.5	-	15	28 @8V	-	-	TSOT26
DMP2305UVT	N	20	8	4.23	1.64	-	60	90	113	0.5	0.9	800	7.6	-	-	-	TSOT26
DMP2036UVT	Y	20	8	6	1.5	-	30	39	58	-	1	-	20.5	-	-	-	TSOT26
DMP2066LVT	N	20	8	4.5	1.8	-	45	65	-	0.4	1.5	1537	14.4	-	-	-	SOT26
DMP2008UFG	N	20	8	14	2.4	-	8	9.8	13	0.4	1	6909	72	-	-	-	PowerDI3333-8
DMP2008USS	N	20	8	13	2.3	-	9	11	16	-	1	-	76	159	-	-	SO-8
DMP210DUFB4	Y	20	10	0.2	0.35	-	5000	7000	10000	0.5	1	14	-	-	-	-	X2-DFN1006-3
DMP2110U	N	20	10	3.5	1.2	-	80	110	-	-	1	-	6	-	-	-	SOT23
DMP2035U	Y	20	10	4	1.2	-	35	45	62	0.4	1	1610	15.4	-	-	-	SOT23
DMP2021UFDE	N	20	10	9	1.9	-	16	22	40	-	1	-	34	59 @8V	-	-	U-DFN2020-6 (Type E)
DMP2109UVT	N	20	10	3.7	1.2	-	80	110	-	0.45	1	443	6	-	-	-	TSOT26
DMP2010UFG	N	20	10	12.7	2.3	-	9.5	12.5	-	-	1.2	-	50	103	-	-	PowerDI3333-8
DMP2206UFG	N	20	10	17.5	2.3	-	5.5	7.5	12	0.4	1	5404	64	140	Y	-	PowerDI3333-8
DMP26M7UFG	N	20	10	18	2.3	-	6.7	9	-	-	1	-	75	156	-	-	PowerDI3333-8
DMP2005UFG	N	20	10	19	2.2	-	4	6.5	14	-	0.9	-	55	125	-	-	PowerDI3333-8
DMP2010UFV	N	20	10	50*	2	-	9.5	12.5	-	-	1.2	3350	50	103	-	-	PowerDI3333-8 (Type UX)
DMP2021UTS	Y	20	10	7.4	1.3	-	16	22	40	-	1	-	34	59 @8V	Y	-	TSSOP-8
DMP2088LCP3	Y	20	12	2.9	1.13	-	105	174	750	-	1.2	-	1.1	-	-	-	X2-DSN1006-3
DMP2078LCA3	Y	20	12	3	1.4	-	100	165	600	0.7	1.2	152	1.1	-	-	-	X4-DSN1006-3
DMP2079LCA3	Y	20	12	3.4	1.4	-	100	165	600	0.7	1.2	152	1.1	-	-	-	X4-DSN1006-3
DMP2077UCA3	N	20	12	4	1.98	-	100	165	600	0.5	1	143	1.34	-	-	-	X4-DSN1006-3
DMP2104LP	N	20	12	1.5	0.5	-	150	200	240	0.45	1	330	-	-	-	-	X1-DFN1411-3
DMP2104V	N	20	12	1.9	0.85	-	150	200	240	0.45	1	330	-	-	-	-	SOT563
DMP2240UW	N	20	12	1.5	0.25	-	150	200	240	0.45	1	340	-	-	Y	-	SOT323
DMP2110UW	N	20	12	2	1.1	-	100	120	160	-	0.9	-	6	-	-	-	SOT323
DMP2165UW	Y	20	12	2.5	0.7	-	90	120	180	-	1	-	2.1	-	-	-	SOT323
ZXM61P02F	N	20	12	0.9	0.625	-	600	900 @2.7V	-	0.7	1.5	160	3.5	-	-	-	SOT23
DMC2301LK	Y	20	12	2.4	1.4	-	160	210	298	-	1	-	1.6	3.4	-	-	SOT23
DMP2123L	N	20	12	3	1.4	-	72	123	-	0.6	1.25	460	7.3	-	Y	-	SOT23
DMP2130L	N	20	12	3	1.4	-	75	125	-	0.6	1.25	460	7.3	-	-	-	SOT23
DMP2170U	N	20	12	3.1	1.28	-	90	250	-	-	1.25	-	3.6	7.8	-	-	SOT23
DMS2095LFDB**1	N	20	12	3.4	1.64	-	95	120	150	0.4	1.3	561	7	-	-	-	U-DFN2020-6 (Type B)
DMS2220LFDB**2	Y	20	12	3.5	1.4	-	95	120	-	-	-	-	-	-	-	-	U-DFN2020-6 (Type B)
DMP2040UFDF	N	20	12	6.1	1.8	-	32	53	-	-	1.5	-	8.6	19 @8V	-	-	U-DFN2020-6 (Type F)
DMP2066UFDE	N	20	12	7.5	2.1	-	36	56	75	0.4	1.1	1537	14.4	-	-	-	U-DFN2020-6 (Type E)
DMP2040UVT	N	20	12	5.5	1.5	-	38	52	-	0.6	1.5	834	8.6	19 @8V	-	-	TSOT26
DMP2035UVT	Y	20	12	6	2	-	35	45	62	0.4	1.5	1610	15.4	-	Y	-	TSOT26
DMP2012SN	Y	20	12	0.7	0.5	-	300	500	-	0.5	1.2	178	-	-	-	-	SC59
DMP2066LSN	N	20	12	4.6	1.25	-	40	70	-	0.6	1.2	880	10.1	-	-	-	SC59
ZXM62P02E6	N	20	12	2.3	1.7	-	200	375 @2.7V	-	0.7	-	350	4.6	-	-	-	SOT26
DMP2130LDM	N	20	12	3.4	1.25	-	80	130	-	0.6	1.25	460	7.3	-	-	-	SOT26
DMP2018LFK	Y	20	12	9.2	2.1	-	16	20	-	0.45	1.2	4748	53	113	-	-	U-DFN2523-6
DMS2120LFWB**2	Y	20	12	2.9	1.5	-	95	120	150	-	-	-	-	-	-	-	W-DFN3020-8 (Type B)
DMP2007UFG	N	20	12	18	2.3	5.5	7	9	-	-	1.3	-	39	85	-	-	PowerDI3333-8
ZXM64P02X	N	20	12	3.5	1.1	-	90	130 @2.7V	-	0.7	-	-	5	-	-	-	MSOP-8
DMP2040USS	N	20	12	7	1.9	-	33	52	-	0.6	1.5	834	8.6	19 @8V	-	-	SO-8
DMP2022LSS	N	20	12	10	2.5	-	16	22	-	0.6	1.1	2444	28.1	56.9	Y	-	SO-8
DMP2003UPS	N	20	12	150*	2.7	2.2	2.55	4	-	-	1.4	-	79	177	-	-	PowerDI5060-8
DMP22M2UPS	N	20	12	42*	2.3	2.5	3.5	5	-	-	1.4	-	228	476	-	-	PowerDI5060-8
DMP2002UPS	N	20	12	60*	2.3	1.9	2.4	3.8	-	-	1.4	-	228	476	-	-	PowerDI5060-8 (Type K)
DMP2043UCA3	Y	20	20	4.2	1.3	-	45	62	-	0.4	1.2	327	1.46	-	-	-	X2-DSN1010-3
DMS2085LSD**1	N	20	20	3.3	1.8	85	125	-	-	0.5	2.2	410	3.7	7.8	-	-	SO-8
DMP2541UCB9	Y	25	6	5.4	1.78	-	40	50	60	-	1.1	-	4.7	-	-	-	U-WLB1515-9 (Type E)
DMP213DUFA	Y	25	8	0.166	0.36	-	10000	13000	-	0.65	1.5	27.2	0.35	-	-	-	X2-DFN0806-3
DMC302PU	Y	25	8	0.17	0.45	-	10000	13000	-	0.65	1.5	27.2	0.35	-	-	-	SOT23
DMP2039UFDE	Y	25	8	6.7	2	-	27	34	40	0.4	1	2580	28.2	48.7 @8V	-	-	U-DFN2020-6 (Type E)
DMP2039UFDE4	Y	25	8	7.3	2.4	-	26	33	40	0.4	1	2600	28.2	-	-	-	X2-DFN2020-6

* @TC = 25°C **1 P+SBR **2 P+SBR

12V – 29V DUAL N-CHANNEL



Part Number	ESD Diode	V _{DS}	V _{GS}	I _{DS} (A)	P _D (W)	R _{DS(ON)} (mΩ max) at V _{GS} =				V _{GS} (th) (V)		C _{ISS} typ (pF)	Q _C typ @ V _{GS} = 4.5V (nC)	Q _C typ @ V _{GS} = 10V (nC)	Automotive Version Avail.	Package
		(V)	(±V)	@T _A =25°C	@T _A =25°C	10V	4.5V	2.5V	1.8V	Min.	Max.					
DMN1150UFL3	Y	12	6	2	0.9	-	150	185	210	-	1	-	1.4	-	-	X2-DFN1310-6 (Type B)
DMN1033UCB4	Y	12	6	5.5	1.45	-	26	31	33	0.35	0.7	2500	37	-	-	U-WLB1818-4
DMN1250UFEL*	N	12	8	2	1.25	-	450	550	-	-	1	-	1.3	-	-	U-QFN1515-12
DMN16M0UCA6	Y	12	8	17	2.6	-	5.9	11	-	0.4	1.3	-	24	-	-	X4-DSN2112-6
DMN1029UFDB	N	12	8	5.6	1.4	-	29	34	44	0.4	1	914	10.5	19.6 @8V	-	U-DFN2020-6 (Type B)
DMN12M7UCA10	Y	12	8	20.2	1.73	-	2.3	6.1	-	0.5	1.4	3039	35.7	-	-	X4-DSN3015-10
DMN1002UCA6	Y	12	8	24.4	2.47	-	2.75	6.1	-	0.35	1.4	3062	45.7	-	-	X4-DSN3118-6
DMN1003UCA6	Y	12	8	23.6	2.67	-	3.2	6.3	-	0.5	1.3	3315	56.5	-	-	X3-DSN3518-6
DMN13M9UCA6	Y	12	8	23.6	2.67	-	3.2	6.5	-	-	1.3	-	56.5	-	-	X3-DSN3518-6 (Type B)
DMN1025UFDB	Y	12	10	6.9	1.7	-	25	30	38	0.4	1	917	12.6	23.1 @8V	-	U-DFN2020-6 (Type B)
DMN1006UCA6	Y	12	12	16.6	2.4	-	5.9	9	-	0.5	1.3	2360	35.2	-	-	X3-DSN2718-6
DMN16M9UCA6	Y	12	12	16.6	2.4	-	6.5	11.4	-	-	1.3	-	35.2	-	-	X3-DSN2718-6 (Type B)
DMG1024UV	Y	20	6	1.4	0.53	-	450	600	750	0.5	1	61	0.74	-	-	SOT563
DMN2991UDA	Y	20	8	0.45	0.31	-	990	1,200	1,800	-	1	-	0.35	-	-	X2-DFN0806-6
DMN21D1UDA	Y	20	8	0.455	0.31	-	990	1,200	1,800	-	1	-	0.41	-	-	X2-DFN0806-6
DMN2990UDJ	Y	20	8	0.45	0.35	-	990	1,200	1,800	0.4	1	28	0.5	-	Y	SOT963
DMN2300UFL4	Y	20	8	2.1	1.39	-	195	260	380	0.45	0.95	70	1.6	-	-	X2-DFN1310-6
DMN2004VK	Y	20	8	0.54	0.25	-	550	700	900	0.5	1	87	-	-	-	SOT563
DMN2004DWK	Y	20	8	0.54	0.2	-	550	700	900	0.5	1	87	-	-	Y	SOT363
DMN2041UVT	N	20	8	5.8	1.1	-	28	32	40	-	0.9	-	9.1	-	-	TSOT26
DMN2004DMK	Y	20	8	0.54	0.225	-	550	700	900	0.5	1	87	-	-	-	SOT26
DMG9926UDM	N	20	8	4.2	0.98	-	28	32	40	0.5	0.9	856	8.3	-	-	SOT26
DMN2016LFC	Y	20	8	5.2	0.77	-	18	22	30	0.4	1.1	1472	16	37	-	U-DFN3030-8
DMN2013UFX	Y	20	8	10	2.14	-	11.5	14	-	0.5	1.1	2607	32.4	57.4 @8V	-	W-DFN5020-6
DMG8822UTS	N	20	8	4.9	0.87	-	25	29	37	0.5	0.9	841	9.6	-	-	TSSOP-8
DMN2016UTS	Y	20	8	8.6	0.88	-	14.5	16.5	-	0.4	1	1495	16.5	-	-	TSSOP-8
DMN2029USD	N	20	8	5.8	1.4	-	25	35	-	0.6	1.5	1171	10.4	18.6 @8V	-	SO-8
DMG9926USD	N	20	8	8	1.3	-	29	29	37	0.5	0.9	880	8.8	-	-	SO-8
DMN26D0UDJ	Y	20	10	0.24	0.3	-	3000	4000	6000	0.45	1.05	14.5	-	-	-	SOT963
DMN2005DLP4K	Y	20	10	0.3	0.4	-	1500	1700	3500	0.53	0.9	37	-	-	-	X2-DFN1310-6
DMN2025UFDB	Y	20	10	6	1.4	-	25	31	-	-	1	-	5.9	12.3	-	U-DFN2020-6 (Type B)
DMN2024UVT	Y	20	10	7	1.6	-	24	28	34	-	0.9	-	7.1	-	-	TSOT26
DMN2028UFU	Y	20	10	7.5	1.8	-	20.2	23.5	30	-	1	-	10	18.4 @8V	-	U-DFN2030-6 (Type B)
DMN2024UDH	Y	20	10	5.2	1.76	-	23	27	34	-	1	-	7.1	28	-	U-DFN3030-8
DMN2022UNS	Y	20	10	10.7	1.9	-	10.8	14.5	17	0.4	1	1870	20.3	-	-	PowerDI3333-8 (Type UXB)
DMN2024UTS	Y	20	10	6.2	1.39	-	24	28	-	-	0.95	-	7.1	14.5	-	TSSOP-8
DMN2400UV	Y	20	12	1.33	0.53	-	500	700	900	0.5	0.9	38	0.5	-	-	SOT563
DMN2050LFDB	N	20	12	4.5	1.42	-	45	55	-	0.4	1	389	5.7	12	-	U-DFN2020-6 (Type B)
DMN2041UFDB	Y	20	12	4.7	1.4	-	40	65	-	0.35	1.4	713	8	15 @8V	-	U-DFN2020-6 (Type B)
DMN2053UVT	N	20	12	4.6	1.1	-	35	43	56	-	1	-	3.6	-	-	TSOT26
DMN2215UDM	Y	20	12	2	0.65	-	100	140	215	0.6	1	188	2.3	-	-	SOT26
DMG6968UDM	Y	20	12	6.5	0.85	-	24	28	34	0.5	0.9	143	8.8	-	-	SOT26
ZXMN2AMC	N	20	12	2.9	1.7	-	120	300	-	0.7	-	310	3.1	-	-	W-DFN3020-8 (Type B)
DMN2016LHAB	Y	20	12	7.5	1.65	-	15.5	20	30	0.5	1.1	1550	16	37	-	U-DFN2030-6 (Type B)
DMN2014LHAB	Y	20	12	9	1.7	-	13	18	28	0.3	1.1	1550	16	37	-	U-DFN2030-6 (Type B)
DMN2008LFU	Y	20	12	14.5	1.7	-	5.4	9.6	-	0.5	1.5	1418	18.7	42.3	-	U-DFN2030-6 (Type B)
DMG8601UFG	Y	20	12	6.1	0.92	-	23	27	34	0.35	1.05	143	8.8	-	-	U-DFN3030-8
DMN2028UFDH	Y	20	12	6.8	1.5	20	22	26	36	0.5	1	151	8.5	-	-	PowerDI3030-8
DMN2011UFX	Y	20	12	12.2	2.1	-	9.5	13	-	0.3	1	2248	24	56	-	V-DFN2050-4
DMG6968UTS	Y	20	12	5.2	1	-	23	27	34	0.35	0.95	143	8.8	-	-	TSSOP-8
DMN2019UTS	Y	20	12	5.4	0.78	18.5	21	24	31	0.35	0.95	143	8.8	-	-	TSSOP-8
DMN2040LTS	N	20	12	6.7	0.89	-	26	36	-	0.5	1.2	570	5.2	-	-	TSSOP-8
DMN2041LSD	N	20	12	7.6	1.16	-	28	41	-	0.5	1.2	550	7.2	15.6	-	SO-8
ZXMN2A04DN8	N	20	12	7.7	2.1	-	25	35	-	-	-	-	-	-	-	SO-8
DMG6898LSD	Y	20	12	9.5	1.28	-	16	23	-	0.5	1.5	1149	11.6	26	-	SO-8
DMN2010UDZ	Y	24	8	10	1.6	-	7	10.5	-	-	1.5	-	33	-	-	U-DFN2535-6 (Type B)

*8x N-CHANNEL ** @TC = 25°C

12V – 29V DUAL N-CHANNEL (CONTINUED)



Part Number	ESD Diode	V _{DS}	V _{GS}	I _{DS} (A)	P _D (W)	R _{DS(ON)} (mΩ max) at V _{GS} =				V _{GS} (th) (V)		C _{ISS} typ (pF)	Q _C typ @ V _{GS} = 4.5V (nC)	Q _C typ @ V _{GS} = 10V (nC)	Automotive Version Avail.	Package
		(V)	(±V)	@T _A =25°C	@T _A =25°C	10V	4.5V	2.5V	1.8V	Min.	Max.					
DMN2036UCB4	Y	24	12	5	1.45	-	36	52	-	0.5	1.3	-	12.6	-	-	X2-WLB1616-4
DMN2023UCB4	Y	24	12	6	1.45	-	26	40	-	0.5	1.3	2564	29	-	-	X1-WLB1818-4
DMT2005UDV	N	24	12	50**	1.9	7	8	12	-	0.5	1.5	2060	24.8	46.7	-	PowerDI3333-8 (Type UXC)
DMG5802LFX	Y	24	12	6.5	0.98	-	15	20	-	0.6	1.5	1080	14.5	31.3	-	W-DFN5020-6
DMN2016UFX	Y	24	12	9.9	2.23	-	15	20	-	-	1.5	-	14	-	-	V-DFN2050-4
DMG6301UDW	Y	25	8	0.24	0.3	-	4000	5000	-	0.65	1.5	279	0.36	-	-	SOT363

12V – 29V DUAL P-CHANNEL

Part Number	ESD Diode	V _{DS}	V _{GS}	I _{DS} (A)	P _D (W)	R _{DS(ON)} (mΩ max) at V _{GS} =				V _{GS} (th) (V)		C _{ISS} typ (pF)	Q _C typ @ V _{GS} = 4.5V (nC)	Q _C typ @ V _{GS} = 10V (nC)	Automotive Version Avail.	Package
		(V)	(±V)	@T _A =25°C	@T _A =25°C	10V	4.5V	2.5V	1.8V	Min.	Max.					
DMP1046UFDB	N	12	8	3.8	1.4	-	61	81	115	0.4	1	915	10.7	17.9 @8V	-	U-DFN2020-6 (Type B)
DMP1055UFDB	Y	12	8	3.9	1.4	-	59	81	115	0.4	1	1028	13	20.8 @8V	-	U-DFN2020-6 (Type B)
DMP2108UCB6	Y	20	6	3	1.2	-	55	80	120	0.5	1.1	269	2.1	-	-	U-WLB1510-6 (Type B)
DMP2900UV	Y	20	6	0.85	0.8	-	750	1050	1500	0.5	1	49	0.7	-	-	SOT563
DMG1023UV	Y	20	6	1.03	0.53	-	750	1050	1500	0.5	1	62	0.62	-	Y	SOT563
DMP2101UCB9	Y	20	6	3.2	1.56	-	100	130	175	0.4	0.9	392	3.2	-	-	U-WLB1515-9
DMP22D4UDA	Y	20	8	0.33	0.31	-	1900	2400	3400	-	1	-	0.4	-	-	X2-DFN0806-6
DMP210DUDJ	Y	20	8	0.2	0.33	-	5500	7500	11500	0.45	1.15	14	-	-	-	SOT963
DMP2004VK	Y	20	8	0.53	0.4	-	900	1400	2000	0.5	1	95	-	-	-	SOT563
DMP2200UFCL	Y	20	8	1.7	1.6	-	200	290	390	0.4	1.2	184	2.2	-	-	U-DFN1616-6 (Type F)
DMP2004DWK	Y	20	8	0.43	0.25	-	900	1400	2000	0.5	1	95	-	-	-	SOT363
DMP2200UDW	Y	20	8	0.9	0.6	-	260	500	1000	0.4	1.2	184	2.1	-	-	SOT363
DMP2075UFDB	Y	20	8	3.8	1.4	-	75	137	-	0.35	1.4	642	8.8	15 @8V	-	U-DFN2020-6 (Type B)
DMP2004DMK	Y	20	8	0.55	0.5	-	900	1400	2000	0.5	1	95	-	-	-	SOT26
DMP2035UTS	Y	20	8	6.04	0.89	-	35	45	62	0.4	1	1610	15.4	-	-	TSSOP-8
DMP2110UVT	N	20	10	1.8	1.1	-	150	200	240	-	1	443	5.9	-	Y	TSOT26
DMP2100UFU	Y	20	10	5.7	1.9	38	43	75	-	-	1.4	-	10.3	21.4	-	U-DFN2030-6 (Type B)
DMP2065UFDB	N	20	12	4.5	1.54	-	50	100	150	0.4	1	752	9.1	-	-	U-DFN2020-6 (Type B)
DMP2240UDM	N	20	12	2	0.6	-	150	200	240	0.45	1	340	-	-	-	SOT26
DMG9933USD	N	20	12	4.6	1.2	-	75	110	-	0.45	1.1	595	6.5	-	-	SO-8
DMP2040USD	N	20	12	6.5	1.8	-	33	52	-	0.6	1.5	834	8.6	19 @8V	-	SO-8
DMG6302UDW	Y	25	8	0.15	0.38	-	10000	13000 @2.7V	-	-	1.5	-	0.34	-	-	SOT363

BATTERY PROTECTION MOSFETs 12V TO 30V



THE DIODES ADVANTAGE

Our range of Chip Scale Package (CSP) MOSFETs allow designers to integrate onboard protection and control into Lithium ion (Li ion) batteries. Ultra low R_{DS(ON)} optimizes power efficiency during charge and discharge cycles.

Dual Back-to-Back (Common Drain) MOSFET provides

- Bidirectional load switch for battery charge and discharge
- Common-Drain reverse-blocking configuration cancels parasitic diodes
- Low R_{DS(ON)} minimizes conduction losses to increase battery power density
- Low V_{GS(th)} ensures the FET is fully enhanced under low operating voltage

12V – 29V COMPLEMENTARY



Part Number	ESD Diode	V _{DS}	V _{GS}	I _{DS} (A)	P _D (W)	R _{DS(ON)} (mΩ max) at V _{GS} =			V _{GS} (th) (V)		C _{ISS} typ (pF)	Q _C typ @ V _{GS} = 4.5V (nC)	Automotive Version Avail.	Package
		(V)	(±V)	@T _A =25°C	@T _A =25°C	4.5V	2.5V	1.8V	Min.	Max.				
DMC1030UFDB	Y	12, 12	8, 8	5.1, 3.9	1.36	34, 59	40, 81	50, 115	0.4, 0.4	1.1	1003, 1028	12.2, 13	Y	U-DFN2020-6 (Type B)
DMC1028UFDB	Y	12, 20	8, 8	6, 3.4	1.36	25, 80	32, 100	40, 140	0.4, 0.4	1.1	787, 576	10.5, 6.7	-	U-DFN2020-6 (Type B)
DMC1029UFDB	N	12, 12	8, 8	5.6, 3.8	1.4	29, 61	34, 81	44, 115	0.4, 0.4	1.1	914, 915	10.5, 10.7	-	U-DFN2020-6 (Type B)
DMC1229UFDB	N	12, 12	8, 8	5.6, 3.8	1.4	29, 61	34, 81	44, 115	0.4, 0.4	1.1	914, 915	10.5, 10.7	-	U-DFN2020-6 (Type B)
DMC1028UVT	Y	12, 20	8, 8	6.1, 3.5	1.2	25, 80	32, 100	40, 140	-	1.1	-	10.5, 6.7	-	TSOT26
DMC1015UPD	N	12, 20	8, 8	9.5, 6.8	2.3	17, 32	25, 53	-	-	1.5, 1.5	-	15.6, 15.4	-	PowerDI5060-8 (Type C)
DMC1016UPD	N, Y	12, 20	8, 8	9.5, 8.7	2.3	17, 20	25, 25	- .40	-	1.5, 1	-	18, 32	-	PowerDI5060-8 (Type C)
DMC1018UPD	N	12, 20	8, 12	9.5, 6.9	2.3	17, 32	25, 52	-	0.6, 0.6	1.5, 1.5	1787	18.6	-	PowerDI5060-8 (Type C)
DMG1016V	Y	20, 20	6, 6	0.87, 0.64	0.53	400, 700	500, 900	700, 1300	0.5	1.1	65, 63	0.74, 0.62	Y	SOT563
DMC2710UV	Y	20, 20	6, 6	1.1, 0.8	0.8	400, 700	500, 900	700, 1300	0.5, 0.5	1.1	42, 49	0.6, 0.7	-	SOT563
DMG1016UDW	Y	20, 20	6, 6	1.07, 0.85	0.33	450, 750	600, 1050	750, 1500	0.5	1.1	65, 63	0.74, 0.62	-	SOT363
DMC2710UDW	Y	20, 20	6, 6	0.75, 0.6	0.38	0.45, 0.75	660, 1050	750, 1500	0.5, 0.5	1.1	42	0.6	-	SOT363
DMC2710UVT	Y	20, 20	6, 6	1.2, 0.9	0.8	400, 700	500, 900	700, 1300	0.45, 0.5	1.1	42, 49	0.6, 0.7	-	TSOT26
DMC2700UDM	Y	20, 20	6, 6	1.34, 1.14	1.12	400, 700	500, 900	700, 1300	0.5, 0.5	1.1	65, 63	0.74, 0.62	Y	SOT26
DMC21DIUDA	Y	20, 20	8, 8	0.455, 0.328	0.3	990, 1900	1200, 2400	1800, 3400	-	1.1	-	0.41, 0.4	-	X2-DFN0806-6
DMC2990UDJ	Y	20, 20	8, 8	0.45, 0.31	0.35	990, 1900	1200, 2400	1800, 3400	0.5, 0.4	1.1	27.6	0.5	Y	SOT963
DMC2004VK	Y	20, 20	8, 8	0.67, 0.53	0.45	550, 900	700, 1400	900, 2000	0.5, 0.5	1.1	85	-	-	SOT563
DMC2004LPK	Y	20, 20	8, 8	0.75, 0.6	0.5	550, 900	700, 1400	900, 2000	0.5, 0.5	1.1	85	-	-	X1-DFN1612-6
DMC2004DWK	Y	20, 20	8, 8	0.54, 0.43	0.25	550, 900	700, 1400	900, 2000	0.5, 0.5	1.1	85	-	-	SOT363
DMC2025UFDB	Y	20, 20	10, 8	6, 3.5	1.4	25, 75	35, 140	-	0.5, 0.35	1.14	486, 642	5.9, 8.8	-	U-DFN2020-6 (Type B)
DMC2020USD	Y	20, 20	10, 10	7.8, 6.3	1.8	20, 33	28, 45	-	0.5, 0.4	1.5, 1	1149, 1610	11.6, 15.4	-	SO-8
DMC2400UV	Y	20, 20	12, 8	1.03, 0.7	1	500, 1000	700, 1500	900, 2000	0.5, 0.5	0.9, 1	37	0.5	-	SOT563
DMC2057UVT	N	20, 20	12, 8	4, 3.3	1.1	42, 72	60, 100	91, 160	0.4, 0.4	1.2, 1	416, 536	4.7, 6.5	-	TSOT26
DMC2450UV	Y	20, 20	12, 12	1.03, 0.7	1	500, 1000	700, 1500	900, 2000	0.5, 0.5	0.9, 1	37.1, 46.1	0.5, 0.5	-	SOT563
DMC2041UFDB	Y	20, 20	12, 12	4.7, 3.2	1.4	40, 90	65, 137	-	0.35, 0.35	1.4, 1.4	713, 881	8, 11	-	U-DFN2020-6 (Type B)
DMC2053UVT	N	20, 20	12, 12	4.6, 3.2	1.1	35, 74	43, 110	-	-	1.1	-	3.6, 5.9	-	TSOT26
DMC25D1UVT	Y	25, 12	8, 8	0.5, 3.9	1.3	4000, 55	- .70	- .100	0.65, 0.35	1.5, 1.5	27.6, 9.7	0.4, 24.5	-	TSOT26
DMC3730UVT	Y	25, 25	8, 8	0.68, 0.46	0.9	450, 1100	600 @2.7V _{gs} , 1500 @2.7V _{gs}	730, 2200	0.45, 0.5	1.1, 1.1	50, 63	1.64, 1.1	-	TSOT26
DMC25D0UVT	N, Y	25, 30	8, 12	0.4, 2.6	1.2	4000, 125	- .300	-	-	1.5	-	0.4, 10	-	TSOT26

LDMOS IN WLB PACKAGE AND INDUSTRY LEADING FOM

THE DIODES ADVANTAGE

Lateral nMOS and pMOS structure in Chip-Scale Packaging (CSP)

Maximize Power Density

- CSP maximizes the die area to give the lowest R_{DS(ON)} and highest power density for a given footprint

Lowest FOM

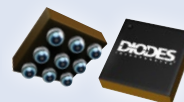
- Industry leading Figure of Merit that enables high speed with high current applications

Applications

- DC-DC Converter
- Point of Load (POL)
- Battery management
- H-Bridge in inductive wireless charging

CHIP-SCALE PACKAGING

BGA (Ball Grid Array)



WLB1515

1.5 x 1.5 x 0.36 mm



WLB1010

1 x 1 x 0.38 mm



WLB0808

0.8 x 0.8 x 0.23 mm

30V N-CHANNEL



Part Number	ESD Diode	V _{DS}	V _{GS}	I _{DS} (A)	P _D (W)	R _{DS(ON)} (mΩ max) at V _{GS} =				V _{GS} (th) (V)	C _{iss} typ (pF)	Q _C typ @ V _{GS} = 4.5V (nC)	Q _C typ @ V _{GS} = 10V (nC)	Automotive Version Avail.	T ₁₇₅ °C Rated	Package
		(V)	(±V)	@T _A =25°C	@T _A =25°C	10V	4.5V	2.5V	1.8V	Max.		@ V _{GS} = 4.5V (nC)				
DMN3900UFA	Y	30	8	0.65	0.49	-	760	930	1500	0.95	42.2	0.7	-	-	-	X2-DFN0806-3
DMN3730UFB	Y	30	8	0.91	0.69	-	460	560	730	0.95	64.3	1.6	-	-	-	X1-DFN1006-3
DMN3730UFB4	Y	30	8	0.91	0.69	-	460	560	730	0.95	64.3	1.6	-	-	-	X2-DFN1006-3
DMN3731UFB4	Y	30	8	1.2	0.97	-	460	560	730	0.95	73	5.5	-	-	-	X2-DFN1006-3
DMN3731U	Y	30	8	0.9	0.58	-	460	560	730	0.95	-	5.5	-	-	-	SOT23
DMN3730U	Y	30	8	0.94	0.71	-	460	560	730	0.95	64.3	1.6	-	-	-	SOT23
DMN3200U	Y	30	8	2.2	0.65	-	90	110	200 @1.5V	1	290	-	-	-	-	SOT23
DMN3115UDM	Y	30	8	3.2	0.9	-	60	80	130 @1.5V	1	476	-	-	-	-	SOT26
DMN32D2LFB4	Y	30	10	0.3	0.35	-	-	1500	2200	1.2	39	-	-	-	-	X2-DFN1006-3
DMN32D0LFB4	Y	30	10	0.44	0.35	-	1R2	1500	2200	1.2	44.8	0.6	-	-	-	X2-DFN1006-3
DMN31D5UFO	Y	30	12	0.41	0.38	-	1500	2000	3000	1	-	0.38	-	-	-	X2-DFN0604-3
DMN31D5UFZ	Y	30	12	0.22	0.393	-	1500	2000	3000	1	22.2	0.35	-	-	-	X2-DFN0606-3
DMN3110LCP3	Y	30	12	3.2	1.38	69 @8V	80	110	160	1.1	-	1.09	-	-	-	X2-DSN1006-3
DMN3060LCA3	Y	30	12	3.9	1.35	60 @8V	72	110	160	1.1	-	1.12	-	-	-	X4-DSN1006-3
DMN31D6UT	Y	30	12	0.35	0.32	-	1500	2000	-	1.4	-	0.35	-	-	-	SOT523
DMN3067LW	Y	30	12	2.6	1.1	-	67	98	-	1.5	447	4.6	-	-	-	SOT323
DMN3060LW	N	30	12	2.6	0.64	60	100	-	-	1.8	395	5.6	-	-	-	SOT323
DMN3065LW	N	30	12	4	0.77	52	65	85	-	1.5	465	5.5	11.7	-	-	SOT323
DMN3300U	N	30	12	2	1.3	-	150	200	250	1	193	-	-	-	-	SOT23
ZXMN3B01F	N	30	12	2	0.806	-	150	240	-	0.7	258	2.93	-	-	-	SOT23
ZXMN3B14F	N	30	12	3.5	1.5	-	80	140	-	0.7	568	6.7	-	-	-	SOT23
DMN3150L	N	30	12	3.8	1.4	54	72	115	-	1.4	305	3.7	8.2	-	-	SOT23
DMN3053L	N	30	12	4	1.2	45	50	55	-	1.4	676	7.3	17.2	-	-	SOT23
DMG3402L	N	30	12	4	1.4	52	65	85	-	1.4	464	5.5	11.7	Y	-	SOT23
DMG3418L	N	30	12	4	1.4	60	70	150	-	1.5	464	5.5	-	-	-	SOT23
DMN3042L	N	30	12	5.8	1.4	26.5	32	48	-	1.4	-	6.1	13.3	-	-	SOT23
DMN3042LFDF	N	30	12	7	2.1	28	32	50	-	1.4	-	6.1	13.3	-	-	U-DFN2020-6 (Type F)
DMN3020UFDF	Y	30	12	10.4	2.03	-	19	25	40	1	-	15	27 @8V	-	-	U-DFN2020-6 (Type F)
DMT3009UFVW	Y	30	12	10.6	2.6	11	13	-	-	1.8	894	7.4	14.6	-	-	PowerDI3333-8 (SWP) (Type UK)
DMN3020UTS	Y	30	12	6.8	1.4	-	20	25	50	1	-	15	27 @8V	-	-	TSSOP-8
ZXMN3B04N8	N	30	12	8.9	3	-	25	40	-	0.7	2480	23.1	-	-	-	SO-8
DMTH3004LFG	N	30	16	75*	2.5	5.5	8.5	-	-	3	2370	20	44	Y	Y	PowerDI3333-8
DMTH32M5LPS	N	30	16	170*	3.2	2.2	3.2	-	-	3	3944 @25V	34	68	Y	Y	PowerDI5060-8
DMTH3002LPS	N	30	16	240*	2.5	1.6	2.5	-	-	2	-	37	77	-	Y	PowerDI5060-8
DMT3002LPS	N	30	16	240*	2.5	1.6	2.5	-	-	2	5000	37	77	-	-	PowerDI5060-8 (Type K)
DMTH3002LK3	N	30	16	150*	3.1	2.45	3.5	-	-	2	4336	30	69	-	Y	TO252 (DPAK)
DMN3071LFR4	N	30	20	3.4	1.1	65	75	-	-	2.5	-	2.1	4.5	-	-	X2-DFN1010-3
DMN33D8LT	Y	30	20	0.115	0.3	-	5000 @4V	7000	-	1.5	48	0.55	1.23	Y	-	SOT523
DMN313DLT	Y	30	20	0.27	0.36	-	2000 @4V	3200	-	1.5	36.3	0.5	-	-	-	SOT523
DMT3020LFCL	N	30	20	7.6	1.7	20	32	-	-	3	393	3.6	7	-	-	U-DFN1616-6 (Type K)
DMN63D8LW	Y	30	20	0.35	0.52	2800	4200	13000	-	1.5	-	0.43	0.9	-	-	SOT323
DMN3061SW	N	30	20	2.7	0.65	60	100	-	-	1.8	278	3.5	-	-	-	SOT323
DMN33D8L	Y	30	20	0.25	0.52	3000	3800 @5V	-	-	2.5	50	-	1.2	-	-	SOT23
DMN63D8L	Y	30	20	0.35	0.52	2800	4200	13000	-	1.5	-	0.43	0.9	-	-	SOT23
DMN31D5L	Y	30	20	0.5	0.53	-	1500 @4Vgs	2000	-	1.6	50	0.5	1.2	-	-	SOT23
ZXM61N03F	N	30	20	1.4	0.625	220	300	-	-	-	150	-	4.1	-	-	SOT23
ZXMN3A01F	N	30	20	2	0.625	120	180	-	-	2.5	190	2.3 @5V	3.9	-	-	SOT23
DMN3110S	N	30	20	3.3	1.3	73	110	-	-	3	306	4.1	8.6	Y	-	SOT23
DMG3406L	N	30	20	3.6	1.4	50	70	-	-	2	-	5.3	11.2	-	-	SOT23
ZXMN3A14F	N	30	20	3.9	1.5	65	95	-	-	2.2	448	-	8.6	Y	-	SOT23
DMN3404L	N	30	20	4.2	1.4	28	42	-	-	2	498	5.3	11.3	-	-	SOT23
DMN3051L	N	30	20	4.5	1.4	38	64	-	-	2.2	424	-	9	-	-	SOT23
DMN3069L	Y	30	20	5.3	1.3	30	40	-	-	1.8	309	4.3	8.1	-	-	SOT23
DMG3404L	N	30	20	5.8	1.33	25	35	-	-	2	-	-	13.2	-	-	SOT23
DMN3023L	Y	30	20	6.2	1.3	25	28	68	-	1.8	-	8.3	18.4	-	-	SOT23
ZXMN3F30FH	N	30	20	4.6, 4.0	1.4	47	65	-	-	3	318	-	7.7	-	-	SOT23

30V N-CHANNEL (CONTINUED)



Part Number	ESD Diode	V _{DS} (V)	V _{GS} (±V)	I _{DS} (A) @T _A =25°C	P _D (W) @T _A =25°C	R _{DS(ON)} (mΩ max) at V _{GS} =				V _{GS} (th) (V) Max.	C _{iss} typ (pF)	Q _G typ @ V _{GS} = 4.5V (nC)	Q _G typ @ V _{GS} = 10V (nC)	Automotive Version Avail.	175°C Rated	Package
						10V	4.5V	2.5V	1.8V							
DMT3020LFDB	N	30	20	7.7	1.8	20	32	-	-	2.5	-	3.6	7	-	-	U-DFN2020-6 (Type B)
DMN3025LFDF	N	30	20	8.3	2.1	20.5	30	-	-	2	-	6	13.2	-	-	U-DFN2020-6 (Type F)
DMT3020LFDF	N	30	20	8.4	1.8	17	28	-	-	2.5	-	3.6	7	-	-	U-DFN2020-6 (Type F)
DMN3021LFDF	N	30	20	9.3	2.03	15	20	-	-	2.2	-	6.7	14	-	-	U-DFN2020-6 (Type F)
DMN3016LFDE	N	30	20	10	2.02	12	16	-	-	2	1415	11.3	25.1	-	-	U-DFN2020-6 (Type E)
DMN3016LFDF	N	30	20	10	2.02	12	16	-	-	2	-	11.3	25.1	-	-	U-DFN2020-6 (Type F)
DMT3008LFDF	N	30	20	12	2.1	10	16	-	-	3	-	5.8	14	-	-	U-DFN2020-6 (Type F)
DMT3006LFDF	N	30	20	14.1	2.1	7	10	-	-	3	-	8.4	16.7	-	-	U-DFN2020-6 (Type F)
DMT35M4LFDF	N	30	20	-	1.7	6.9	10.5	-	-	2.5	-	8.1	14.9	-	-	U-DFN2020-6 (Type F)
DMG6402LVT	N	30	20	6	1.75	30	42	-	-	2	498	-	11.4	-	-	TSOT26
DMN3026LVT	N	30	20	6.6	1.5	23	30	-	-	2	643	5.7	12.5	Y	-	TSOT26
DMN100	Y	30	20	1.1	0.5	150	170	-	-	3	150	-	5.5	-	-	SC59
DMN3070SSN	Y	30	20	4.2	1.3	40	50	80	-	2.1	697	6	13.2	-	-	SC59
DMN3033LSN	N	30	20	6	1.4	30	40	-	-	2.1	755	10.5 @5V	-	Y	-	SC59
ZXMN3A01E6	N	30	20	3	1.7	120	180	-	-	-	190	2.3 @5V	3.9	-	-	SOT26
DMN3051LDM	N	30	20	4	0.9	38	64	-	-	2.2	424	4.3	8.6	-	-	SOT26
ZXMN3A03E6	N	30	20	4.6	1.7	50	65	-	-	-	600	6.9 @5V	12.6	-	-	SOT26
DMN3033LDM	N	30	20	6.9	2	33	40	-	-	2.1	755	6.4	13	-	-	SOT26
DMG4800LFC	N	30	20	7.44	0.94	17	24	-	-	1.5	798	8.7	-	-	-	U-DFN3030-8
DMG4468LFC	N	30	20	7.62	0.99	15	23.5	-	-	2	867	-	18.85	-	-	U-DFN3030-8
DMT3006LDC	N	30	20	17.1	2.8	6.5	10	-	-	3	-	8.4	16.7	-	-	V-DFN3030-8 (Type Q)
DMN3024SFG	N	30	20	7.5	2.2	23	33	-	-	2.4	479	5	10.5	-	-	PowerDI3333-8
DMG7430LFG	N	30	20	10.5	2.2	11	15	-	-	2.5	1281	12.5	26.7	Y	-	PowerDI3333-8
DMT3009LFVW	N	30	20	12	2.3	11	13	-	-	3	2000	5.8	12	Y	-	PowerDI3333-8 (SWP) (Type UX)
DMT3006LFG	N	30	20	16	-	6	10	-	-	3	1155	8.4	16.7	-	-	PowerDI3333-8
DMN3009SFG	N	30	20	16	2.1	5.5	9	-	-	2.5	2000	20	42	Y	-	PowerDI3333-8
DMN3008SFG	N	30	20	17.6	2.1	4.4	5.5	-	-	2.3	3690	41	86	Y	-	PowerDI3333-8
DMT3003LFG	N	30	20	22	2.4	3.2	5.5	-	-	3	2370	20	44	Y	-	PowerDI3333-8
DMN3010LFG	N	30	20	30	2.4	8.5	10.5	-	-	2.5	2075	16.1	37	-	-	PowerDI3333-8
DMT32M5LFG	N	30	20	30	2.3	1.7	2.8	-	-	3	4066	34	67.7	-	-	PowerDI3333-8
DMN3025LFV	N	30	20	25*	2.2	18	30	-	-	2	-	4.6	9.8	-	-	PowerDI3333-8 (Type UX)
DMT3020LFVW	N	30	20	38*	2	17	28	-	-	2.5	393	3.6	7	-	-	PowerDI3333-8 (SWP) (Type UX)
DMT35M4LFVW	N	30	20	60*	2.2	6	9	-	-	2.5	982	7.9	16.1	-	-	PowerDI3333-8 (SWP) (Type UX)
DMN3009LFVW	N	30	20	60*	2	5	7.4	-	-	2.5	2000	20	42	Y	-	PowerDI3333-8 (SWP) (Type UX)
DMN3009LFV	N	30	20	60*	2	5.5	9	-	-	3	-	20	42	-	-	PowerDI3333-8 (Type UX)
DMT3006LFV	N	30	20	60*	2	7	11	-	-	3	-	8.4	16.7	Y	-	PowerDI3333-8 (Type UX)
DMT35M7LFV	Y	30	20	76*	1.98	5	8.5	-	-	2.4	1667	21	36	-	-	PowerDI3333-8 (Type UX)
ZXMN3A02X8	N	30	20	5.3	1.1	25	35	-	-	-	1400	14.5 @5V	26.8	-	-	MSOP-8
ZXMN3A01Z	N	30	20	3.3	2.12	120	180	-	-	-	-	2.6	5	-	-	SOT89
DMN3025LSS	N	30	20	7.2	1.7	20	31	-	-	2	641	6	13.2	-	-	SO-8
DMN4800LSSL	N	30	20	8	1.46	14	20	-	-	1.6	798	8.7	-	-	-	SO-8
DMN3024LSS	N	30	20	8.5	2.8	24	36	-	-	3	608	6.3	12.9	-	-	SO-8
DMN4468LSS	N	30	20	10	1.52	14	20	-	-	1.95	867	-	18.85	-	-	SO-8
DMG4466SSSL	N	30	20	10	1.42	23	33	-	-	2.4	479	5	10.5	-	-	SO-8
DMN3016LSS	N	30	20	10.3	2	12	16	-	-	2.5	1415	11.3	25.1	-	-	SO-8
DMN3009SSS	N	30	20	15	1.8	5.5	7.5	-	-	2.5	2000	20	42	-	-	SO-8
DMN3007LSS	N	30	20	16	2.5	7	10	-	-	2.1	2714	31.2	64.2	-	-	SO-8
DMN3010LSS	N	30	20	16	2.5	9	13	-	-	2	2096	22.4	43.7	-	-	SO-8
DMN3032LE	N	30	20	5.6	1.8	29	35	-	-	2	498	4.1	11.3	-	-	SOT223
DMN3016LPS	N	30	20	10.8	2.75	12	16	-	-	2	-	11.3	25.1	-	-	PowerDI5060-8
DMT3006LPS	N	30	20	16	2.6	6	9.8	-	-	3	1155	8.4	16.7	-	-	PowerDI5060-8
DMT36M1LPS	N	30	20	16	2.6	6	9.8	-	-	3	1155	8.4	16.7	-	-	PowerDI5060-8
DMT34M1LPS	N	30	20	21	2.2	3.2	5.2	-	-	3	2242	20	39	-	-	PowerDI5060-8
DMT31M7LPS	N	30	20	30	2.4	1.7	2.4	-	-	3	5741	45	90	-	-	PowerDI5060-8
DMT31M6LPS	N	30	20	35.8	2.5	1.35	2.4	-	-	3	7019	59.1	123	-	-	PowerDI5060-8
DMT30M9LPS	N	30	20	100*	2.6	1	1.6	-	-	3	12121	71.3	160.5	-	-	PowerDI5060-8
DMT32M5LPS	N	30	20	150*	3.2	2	3	-	-	3	3944 @25V	34	68	-	-	PowerDI5060-8

* @TC = 25°C

30V N-CHANNEL (CONTINUED)



Part Number	ESD Diode	V _{DS} (V)	V _{GS} (±V)	I _{DS} (A) @T _A =25°C	P _D (W) @T _A =25°C	R _{DS(ON)} (mΩ max) at V _{GS} =				V _{GS} (th) (V) Max.	C _{iss} typ (pF)	Q _G typ @ V _{GS} = 4.5V (nC)	Q _G typ @ V _{GS} = 10V (nC)	Automotive Version Avail.	175°C Rated	Package
						10V	4.5V	2.5V	1.8V							
DMG4468LK3	N	30	20	9.7	1.68	16	25	-	-	1.95	867	-	18.85	-	-	TO252 (DPAK)
DMN3016LK3	N	30	20	12.4	2.8	12	16	-	-	2.3	1415	11.3	25.1	-	-	TO252 (DPAK)
DMN3024LK3	N	30	20	14.4	4.1	24	39	-	-	3	608	6.3	12.9	-	-	TO252 (DPAK)
DMNH3010LK3	N	30	20	15	3.2	9.5	11.5	-	-	2.5	-	16.1	37	-	Y	TO252 (DPAK)
DMG8880LK3	N	30	20	16.5	1.68	7.5	12	-	-	2.3	1289	14.4	27.6	-	-	TO252 (DPAK)
ZXMN3A04K	N	30	20	18.4	2.15	20	34	-	-	1	-	19.9 @5V	36.8	-	-	TO252 (DPAK)
DMN3009SK3	N	30	20	20	3.4	5.5	9	-	-	2.5	-	20	42	-	-	TO252 (DPAK)
DMN3010LK3	N	30	20	43	2.4	9.5	11.5	-	-	2.5	2075	17	37	-	-	TO252 (DPAK)
DMN3025LFG	N	30	25	7.5	2	18	28	-	-	2	605	5.3	11.6	-	-	PowerDI3333-8
DMN3029LFG	N	30	25	8	2.07	18.6	26.5	-	-	1.8	580	5.3	11.3	-	-	PowerDI3333-8
DMG7410SFG	N	30	25	8	2.07	20	27	-	-	2	580	5.3	11.3	-	-	PowerDI3333-8
DMN3027LFG	N	30	25	8	2.07	18.6	-	-	-	1.8	-	5.3	11.3	-	-	PowerDI3333-8
DMN3018SFG	Y	30	25	8.5	2.2	21	35	-	-	2.1	697	6	13.2	Y	-	PowerDI3333-8
DMN3030LFG	N	30	25	8.6	2.3	18	27	-	-	2.1	751	9	17.4	-	-	PowerDI3333-8
DMN3018SSS	Y	30	25	7.3	1.7	21	35	-	-	2.1	697	6	13.2	-	-	SO-8
DMN4800LSS	N	30	25	8.6	1.7	14	20	-	-	1.6	798	8.7	-	Y	-	SO-8
DMN3030LSS	N	30	25	9	2.5	18	30	-	-	2.1	741	7.6	16.7	-	-	SO-8
DMG4496SSS	N	30	25	10	1.42	21.5	29	-	-	2	493.5	4.7	10.2	-	-	SO-8
DMG4466SSS	N	30	25	10	1.42	23	33	-	-	2.4	479	5	10.5	-	-	SO-8
DMG4800LK3	N	30	25	10	1.71	17	24	-	-	1.6	798	8.7	-	-	-	TO252 (DPAK)
DMT3004LFG	N	30	20, 16	10.4	2.1	4.5	7	-	-	3	-	20	44	-	-	PowerDI3333-8
DMT3004LPS	N	30	20, 16	140*	2.7	3.8	6	-	-	3	-	-	43.7	-	-	PowerDI5060-8
DMTH3004LPS	N	30	20, 16	145*	3.2	3.8	6	-	-	3	-	-	43.7	Y	Y	PowerDI5060-8
DMTH3004LK3	N	30	20, 16	75*	3	4	7	-	-	3	-	20	44	Y	Y	TO252 (DPAK)

* @TC = 25°C

DFN2020

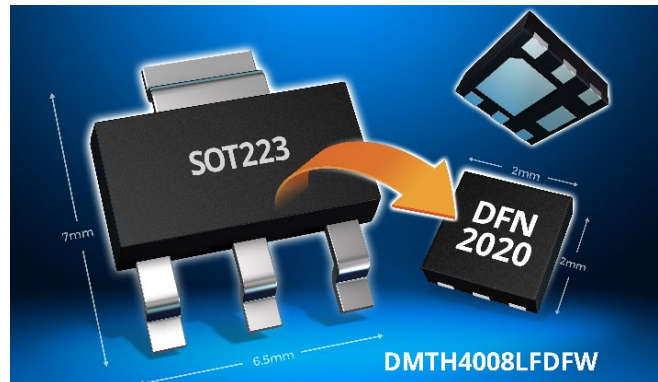
Diodes has been at the forefront of small package development and manufacturing for many years and offers an industry-leading portfolio of devices with the smallest of footprints.

For example, improvements in both lead design and underside thermal pads mean that devices that were once available in a SOT (small-outline transistor) packages now have smaller equivalents.

One popular Diodes device is the 40V DMTH4008LDFFW, a MOSFET that is packaged in the tiny DFN2020 (2mm x 2mm).

Taking up less than 10% of the area on a PCB that a traditional SOT223 package requires, this kind of miniature MOSFET brings greater power density to many applications, including DC-DC converters and LED backlighting.

Consequently, with this MOSFET the internal dissipation losses are reduced by 20% compared to similar devices, which improves design flexibility and boosts efficiency considerably in the much smaller DFN (dual flat no lead) packages.



THE DIODES ADVANTAGE

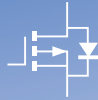
- **Low Figure of Merit ($R_{DS(ON)} \times Q_G$)**
Minimizes power losses, increases efficiency
- **Maximum Junction Temperature of +175°C**
Ideal for use in high ambient temperature environments
- **Sidewall plated DFN2020**
For easy automated optical inspection (AOI)
- **PCB Footprint of just 4mm²**
Occupies just 10% of the PCB area of larger packages, such as SOT223

30V P-CHANNEL



Part Number	ESD Diode	V _{DS}	V _{GS}	I _{DS} (A)	P _D (W)	R _{DS(ON)} (mΩ max) at V _{GS} =				V _{GS} (th) (V)	C _{ISS} typ (pF)	Q _C typ @ V _{GS} = 4.5V (nC)	Q _C typ @ V _{GS} = 10V (nC)	Automotive Version Avail.	175°C Rated	Package
		(V)	(±V)	@T _A =25°C	@T _A =25°C	10V	4.5V	2.5V	1.8V	Min.		@ V _{GS} = 4.5V (nC)				
DMP32D5LFA	Y	30	8	0.3	0.36	-	1500	2500	7500	1.2	-	0.7	-	-	-	X2-DFN0806-3
DMP31D0UFB4	Y	30	8	0.76	0.92	-	1000	1500	2000	1.1	76	0.9	1.5 @8V	-	-	X2-DFN1006-3
DMP31D0U	Y	30	8	0.67	0.71	-	1000	1500	2000	1.1	76	0.9	1.5 @8V	-	-	SOT23
DMP32D9UFZ	Y	30	10	0.2	0.39	-	5000	6000	7000	1	22.5	0.35	-	-	-	X2-DFN0606-3
DMP3068L	N	30	12	3.3	1.2	72	85	120	-	1.3	708	7.3	15.9	-	-	SOT23
DMP3068LVT	N	30	12	2.8	1.8	75	105	150	-	1.3	708	7.3	-	-	-	TSOT26
DMP3105LVT	N	30	12	3.9	1.75	75	98	150	-	1.5	839	9	19.8	-	-	TSOT26
DMG3401LSN	N	30	12	3	0.8	50	60	85	-	1.3	1326	11.6	25.1	-	-	SC59
ZXM62P03E6	N	30	12	1.5	0.625	150	230	-	-	-	330	10.2	-	-	-	SOT26
DMP32D4SFB	Y	30	20	0.4	1.2	2400	4000	16000	-	2.3	51	0.6	1.3	-	-	X1-DFN1006-3
DMP32D4SW	Y	30	20	0.25	0.432	2400	4000	-	-	2.4	51.2	0.6	1.2	-	-	SOT323
DMP31D7LW	Y	30	20	0.52	0.37	900	1700	-	-	2.6	-	0.36	-	-	-	SOT323
DMP32D4S	Y	30	20	0.3	0.54	2400	4000	-	-	2.4	51.2	0.6	1.2	-	-	SOT23
DMP31D7L	Y	30	20	0.58	0.46	900	1700	-	-	2.6	-	0.36	-	-	-	SOT23
ZXM61P03F	N	30	20	1.1	0.625	350	550	-	-	-	140	-	4.8	-	-	SOT23
ZXMP3A13F	N	30	20	1.6	0.806	210	330	-	-	1	206	3.8 @5V	6.4	-	-	SOT23
DMP3125L	N	30	20	2.5	1.2	95	145	-	-	2.1	254	3.1	-	-	-	SOT23
DMP3165L	N	30	20	3.3	1.3	90	134	-	-	2.1	-	1	2	-	-	SOT23
ZXMP3F30FH	N	30	20	3.4	1.4	80	140	-	-	3	370	-	7	-	-	SOT23
DMP3099L	N	30	20	3.8	1.08	65	99	-	-	2.1	563	5.2	11	Y	-	SOT23
DMP3098L	N	30	20	3.8	1.08	70	120	-	-	2.1	336	4	7.8	Y	-	SOT23
DMP3028LFDE	N	30	20	6.8	2.03	25	38	-	-	2.4	-	10.9	22	-	-	U-DFN2020-6 (Type E)
DMP3065LVT	Y	30	20	4.9	1.6	42	65	-	-	2.1	587	6.3	12.3	-	-	TSOT26
DMP3030SN	Y	30	20	0.7	0.5	250	450	-	-	3	160	-	-	-	-	SC59
DMG3407SSN	N	30	20	4	1.1	50	72	-	-	2.1	582	6.5	13.3	-	-	SC59
DMP3098LDM	N	30	20	4	1.25	65	115	-	-	2.1	336	4	7.8	-	-	SOT26
ZXMP3A17E6	N	30	20	4	1.7	70	110	-	-	1	630	8.28 @5V	15.8	-	-	SOT26
DMP3056LDM	N	30	20	4.3	1.5	45	65	-	-	2.1	948	10.1	21.1	-	-	SOT26
DMP3085LSS	N	30	20	3.8	1.6	70	95	-	-	3	563	5.2	11	-	-	SO-8
DMP3098LSS	N	30	20	5.3	2.5	65	115	-	-	2.1	336	4	7.8	-	-	SO-8
DMP3037LSS	N	30	20	5.8	1.6	32	50	-	-	2.4	931	9.7	19.3	Y	-	SO-8
ZXMP3A16N8	N	30	20	6.7	2.8	40	70	-	-	1	-	17.2 @5V	29.6	-	-	SO-8
DMP3056LSS	N	30	20	7.1	2.5	45	65	-	-	2.1	722	6.8	13.7	Y	-	SO-8
DMP3004SSS	Y	30	20	23.4	1.6	-	6.5	-	-	2.5	7693	73	156	-	-	SO-8
ZXMP3A16G	N	30	20	7.5	3.9	45	70	-	-	1	1022	17.2 @5V	29.6	-	-	SOT223
DMP3012LPS	N	30	20	13.2	2.36	9	12	-	-	2.1	6807	66	139	-	-	PowerDI5060-8
DMP3010LPS	N	30	20	15	2.6	7.5	10	-	-	2.1	-	66	139	Y	Y	PowerDI5060-8
DMP32M6SPS	N	30	20	100*	2.3	2.6	3.75	-	-	-	8594	75	158	-	-	PowerDI5060-8
DMP3010LK3	N	30	20	16	3.9	7.5	10	-	-	2.1	-	66	139	Y	Y	TO252 (DPAK)
DMP3028LK3	N	30	20	27*	2.8	25	38	-	-	2.4	-	11	22	Y	-	TO252 (DPAK)
DMP32D5SFB	Y	30	25	0.4	1.2	2400	-	-	-	2.3	-	0.62	1.25	-	-	X1-DFN1006-3
DMP3056L	N	30	25	4.3	1.38	50	70	-	-	2.1	-	5.8	11.8	-	-	SOT23
DMP3026SDF	Y	30	25	8.6	2	19	45	-	-	3	-	9.2	19.6	-	-	U-DFN2020-6 (Type F)
DMP3026SFDE	Y	30	25	8.7	2	19	45	-	-	3	-	9.2	19.6	-	-	U-DFN2020-6 (Type E)
DMP3050LVT	N	30	25	4.5	1.8	50	75	-	-	2	620	5.1	10.5	-	-	TSOT26
DMP3018SFK	Y	30	25	10.2	2.2	14.5	25.5	-	-	3	-	21.6	42.7	-	-	U-DFN2523-6
DMP3017SFK	Y	30	25	10.4	2.2	14	25	-	-	2.5	2207	21.6	42.7	-	-	U-DFN2523-6
DMP3013SFK	Y	30	25	10.5	2.1	14	25	-	-	3	1674	16.2 @5V	33.7	-	-	U-DFN2523-6
DMP3036SFG	N	30	25	8.7	2.3	20	29	-	-	2.5	-	8.8 @5V	16.5	-	-	PowerDI3333-8
DMP3036SFV	N	30	25	8.7	2.3	20	29	-	-	2.5	1931	8.8 @5V	16.5	-	-	PowerDI3333-8 (Type UX)
DMP3018SFV	Y	30	25	11	1.9	12	21	-	-	3	-	28 @5V	51	Y	-	PowerDI3333-8 (Type UX)
DMP3013SFV	Y	30	25	12	1.94	9.5	17	-	-	3	-	16.2 @5V	33.7	-	-	PowerDI3333-8 (Type UX)
DMP3007SCG	Y	30	25	50*	2.4	6.8	13	-	-	3	-	31.2	64.2	Y	-	V-DFN3333-8 (Type B)

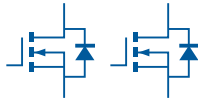
30V P-CHANNEL (CONTINUED)



Part Number	ESD Diode	V _{DS}	V _{GS}	I _{DS} (A)	P _D (W)	R _{DS(ON)} (mΩ max) at V _{GS} =				V _{GS} (th) (V)	C _{iss} typ (pF)	Q _C typ @ V _{GS} = 4.5V (nC)	Q _C typ @ V _{GS} = 10V (nC)	Automotive Version Avail.	1/5°C Rated	Package
		(V)	(±V)	@T _A =25°C	@T _A =25°C	10V	4.5V	2.5V	1.8V	Min.		@ V _{GS} = 4.5V (nC)				
DMP3007SFG	Y	30	25	70*	2.8	6	13	-	-	3	2826	31.2	64.2	-	-	PowerDI3333-8
DMP3050LSS	N	30	25	4.8	1.7	45	80	-	-	2	620	5.1	10.5	-	-	SO-8
DMG4435SSS	N	30	25	7.3	2.5	20	29	-	2.5	2.5	-	18.9	35.4	-	-	SO-8
DMP3018SSS	Y	30	25	10.5	1.7	12	21	-	-	3	2147	28	51	-	-	SO-8
DMP3035LSS	N	30	25	11	2.5	18	36	-	-	2	-	15.3	30.7	-	-	SO-8
DMP3036SSS	N	30	25	11.4	1.9	20	29	-	-	3	1931	8.8 @5V	16.5	-	-	SO-8
DMP3020LSS	N	30	25	12	2.5	14	25	-	-	2	1802	15.3	30.7	-	-	SO-8
DMP3007LSS	Y	30	25	14	2.1	7	10	12	-	2.8	-	31.2	64.2	-	-	SO-8
DMP34M4SPS	N	30	25	87*	3	3.8	-	-	-	2.6	-	-	127	-	-	PowerDI5060-8
DMP3007SPS	Y	30	25	90*	2.7	7	16	-	-	3	-	31.2	64.2	Y	-	PowerDI5060-8
DMP3007LK3	Y	30	25	18.5	3	7	10	-	-	2.8	-	31.2	64.2	-	-	TO252 (DPAK)

* @TC =25°C

30V DUAL N-CHANNEL



Part Number	ESD Diode	V _{DS}	V _{GS}	I _{DS} (A)	P _D (W)	R _{DS(ON)} (mΩ max) at V _{GS} =				V _{GS} (th) (V)	C _{iss} typ (pF)	Q _C typ @ V _{GS} = 4.5V (nC)	Q _C typ @ V _{GS} = 10V (nC)	Automotive Version Avail.	Package
		(V)	(±V)	@T _A =25°C	@T _A =25°C	10V	4.5V	2.5V	1.8V	Min.		@ V _{GS} = 4.5V (nC)			
DMN3270UVT	N	30	5, 0.5	1.6	1.08	-	270	350	-	0.9	-	3.07	-	-	TSOT26
DMN32D2LV	Y	30	10	0.4	0.45	-	-	1500	2200	1.2	39	-	-	-	SOT563
DMN32D2LDF	Y	30	10	0.4	0.28	-	1200	1500 @4V	2200	1.2	39	-	-	-	SOT353
DMN3022LDC	N	30	10	7.6	1.96	-	22 @5V, 8 @5V	-	-	2.1, 1.2	370, 766	2.8, 6.1	-	-	PowerDI3333-8 (Type D)
DMN3013LDC	Y	30	10	15*	2.16	-	16.1 @5Vgs	-	-	1.2, 1.2	387	3.3, 3.4	-	-	PowerDI3333-8 (Type D)
DMN3022LFG	N	30	10	15*	1.96	-	-	-	-	2.1, 1.2	-	2.8/6.1	-	-	PowerDI3333-8 (Type D)
DMN3013LFG	Y	30	10	15, 15*	2.16	14.3, 14.3 @8V	16.1, 16.1	-	-	1.2, 1.2	387	3.3, 3.4	-	-	PowerDI3333-8 (Type D)
DMN3012LEG	N	30	10	20*	2.2	-	12 @5V, 6 @5V	-	-	2.1, 1.15	650, 1137	4.7, 9.7	-	-	PowerDI3333-8 (Type D)
DMN3012LFG	N	30	10	20, 20*	2.16	-	12 @5V, 6 @5V	-	-	2.1, 1.15	-	4.7, 9.7	-	-	PowerDI3333-8 (Type D)
DMN31D5UDA	Y	30	12	0.4	0.37	-	1500	2000	3000	1	22.6	0.38	-	-	X2-DFN0806-6
DMN31D5UDJ	Y	30	12	0.22	0.35	-	1500	2000	3000	1	22.6	15	0.38	-	SOT963
DMN3055LFDB	N	30	12	5	1.36	-	40	75	-	1.5	-	5.3	11.2	-	U-DFN2020-6 (Type B)
DMN3060LVT	N	30	12	3.6	1.16	60	100	-	-	-	395	5.6	11.3	-	TSOT26
DMT3022UEV	Y	30	12	17*	1.8	22	28	-	-	1.8	-	6.9	13.9	-	PowerDI3333-8 (Type UXD)
DMT3009LDT	N	30	20, 16	30*	2	11.1	13.8	-	-	3	-	6.4	13.8	-	V-DFN3030-8 (Type K)
DMT3009LEV	N	30	20, 16	20*	1.8	12	20	-	-	3	823	5.8	12	-	PowerDI3333-8 (Type UXD)
DMT3011LDT	N	30	20, 20/16	21.5, 28.8	1.9	20, 11.1	32, 13.8	-	-	3, 3	-	6, 6.4	13.2, 13.8	-	V-DFN3030-8 (Type K)
DMN63D8LV	Y	30	20	0.26	0.45	2800	4200	13000	-	1.5	22	0.43	0.87	-	SOT563
DMN33D8LV	Y	30	20	0.35	0.43	2400	3000	7000	-	1.5	48	0.55	1.23	-	SOT563
DMN33D9LV	Y	30	20	0.35	0.43	2400	3000	7000	-	1.4	-	0.55	1.23	-	SOT563
DMN33D8LDW	Y	30	20	0.25	0.35	2400	3000	7000	20000	1.5	48	0.55	1.23	-	SOT363
DMN63D8LDW	Y	30	20	0.26	0.4	2800	4200	13000	-	1.5	22	0.43	0.87	-	SOT363
DMN32D4SDW	Y	30	20	0.65	0.35	400	700	-	-	1.6	-	0.6	1.3	-	SOT363

30V DUAL N-CHANNEL (CONTINUED)



Part Number	ESD Diode	V _{DS}	V _{GS}	I _{DS} (A)	P _D (W)	R _{DS(ON)} (mΩ max) at V _{GS} =				V _{GS} (th)	C _{ISS} typ (pF)	Q _C typ @ V _{GS} = 4.5V (nC)	Q _C typ @ V _{GS} = 10V (nC)	Automotive Version Avail.	Package
		(V)	(±V)	@T _A =25°C	@T _A =25°C	10V	4.5V	2.5V	1.8V	Min.					
DMN3401LDW	Y	30	20	0.8	0.35	400	700	-	-	1.6	-	0.5	1.2	-	SOT363
DMN3190LDW	Y	30	20	1	0.4	190	335	-	-	2.8	87	0.9	2	-	SOT363
DMN3032LFDB	N	30	20	6.2	1.7	30	42	-	-	2	-	5	10.6	Y	U-DFN2020-6 (Type B)
DMN3032LFDBW	N	30	20	6.2	1.7	30	42	-	-	2	500	5	10.6	Y	U-DFN2020-6 SWP
DMN3135LVT	N	30	20	3.5	1.27	60	100	-	-	2.2	305	4.1	9	-	TSOT26
DMN3008SCP10	Y	30	20	14.6	2.7	7.8	11	-	-	2.3	-	15.8	31.3	-	X4-DSN3415-10
DMN3035LWN	N	30	20	5.5	1.78	35	45	-	-	2	-	4.5	9.9	-	V-DFN3020-8 (Type N)
ZXMN3AMC	N	30	20	3.7, 3.0	2.45	120	180	-	-	3	190	2.3	3.9	-	W-DFN3020-8 (Type B)
DMN3016LDN	N	30	20	7.3	1.6	20	24	-	-	2	-	11.3	25.1	-	V-DFN3030-8 (Type J)
DMT3020LDT	N	30	20	8*	1.95	20	32	-	-	2.5	393	3.6	7	-	V-DFN3030-8
DMN3016LDV	N	30	20	21*	1.8	12	17	-	-	2	-	9.5	21	-	PowerDI3333-8 (Type UXC)
DMT3006LDV	N	30	20	25*	1.8	10	14	-	-	3	1155	8.4	16.7	-	PowerDI3333-8 (Type UXC)
DMT3020LDV	N	30	20	32*	1.9	20	32	-	-	2.5	393	3.6	7	-	PowerDI3333-8 (Type UXC)
ZXMD63N03X	N	30	20	2.3	1.25	135	200	-	-	-	290	-	8	-	MSOP-8
DFBR030U3LP**	N	30	20	3.2	1	26	32	-	-	2.2	-	-	-	-	U-DFN4040-8
ZXMN3A06DN8	N	30	20	6.2	2.1	35	50	-	-	1	-	9.2 @5V	17.5	-	SO-8
DMN3033LSD	N	30	20	6.9	2	20	27	-	-	2.1	725	6.4	13	Y	SO-8
DMN3024LSD	N	30	20	7.2	2	24	36	-	-	3	608	6.3	12.9	-	SO-8
DMN3015LSD	N	30	20	8.4	1.6	15	18	-	-	2.5	1415	11.3	25.1	-	SO-8
ZXMN3A04DN8	N	30	20	8.5	2.8	20	30	-	-	1	-	19.9 @5V	36.8	-	SO-8
DMG4822SSD	N	30	20	10	1.42	20	31	-	-	3	479	5	10.5	Y	SO-8
DMT3020LSD	N	30	20	16*	1.5	20	32	-	-	2.5	393	3.6	7	Y	SO-8
ZXMN3G32DN8	N	30	20	7.1, 5.6	2.1	28	45	-	-	3	-	-	10.5	-	SO-8
ZXMN3F31DN8	N	30	20	7.3, 5.7	2.1	24	39	-	-	3	608	6.3	12.9	-	SO-8
DMT3006LPB	N	30	20	11, 14	1.7	11.1, 6	14, 10	-	-	3, 3	-	6.3, 8.4	12.6, 16.7	-	PowerDI5060-8 (Type S)
DMN3018SSD	Y	30	25	6.7	1.5	22	30	-	-	2.1	697	6	13.2	-	SO-8
DMG4800LSD	N	30	25	8.4	1.5	16	22	-	-	1.6	798	8.6	-	-	SO-8

* @T_C = 25°C **2N + SBR

30V DUAL P-CHANNEL



Part Number	ESD Diode	V _{DS}	V _{GS}	I _{DS} (A)	P _D (W)	R _{DS(ON)} (mΩ max) at V _{GS} =		V _{GS} (th)	C _{ISS} typ (pF)	Q _C typ @ V _{GS} = 4.5V (nC)	Q _C typ @ V _{GS} = 10V (nC)	Automotive Version Avail.	Package	
		(V)	(±V)	@T _A =25°C	@T _A =25°C	10V	4.5V	Max.						
DMP32D9UDA	Y	30	12	0.22	0.36	-	5000	1	21.8	0.35	-	-	-	X2-DFN0806-6
DMP31D7LDW	Y	30	20	0.55	0.4	-	1700	2.6	19	0.36	0.8	-	-	SOT363
DMP3164LVT	N	30	12	2.8	1.16	95	140	2.1	324	4.4	-	-	-	TSOT26
DMP3165SVT	N	30	20	2.7	1.08	-	140	2.2	287	3.5	6.8	-	-	TSOT26
DMP3028LSD	N	30	20	6	1.7	25	38	3	1241	10.9	22	-	-	SO-8
DMP3056LSD	N	30	20	6.9	2.5	45	65	2.1	722	6.8	13.7	Y	-	SO-8
DMP3098LSD	N	30	20	4.4	1.8	65	115	2.1	336	4	7.8	-	-	SO-8
DMP3085LSD	N	30	20	3.9	1.7	70	95	3	563	5.2	11	-	-	SO-8
DMP3036SSD	N	30	25	18	1.7	20	29	3	-	8.8 @5V	16.5	-	-	SO-8
ZXMP3A16DN8	N	30	20	5.5	2.1	45	70	1	-	17.2 @5V	29.6	-	-	SO-8
ZXMP3A17DN8	N	30	20	4.4	2.1	70	110	1	-	8.28 @5V	15.8	-	-	SO-8
DMP3048LSD	N	30	12	4.8	1.7	48	57	1.3	-	13.5	29.6	-	-	SO-8

HIGHEST EFFICIENCY FROM LDMOS 30V HALF-BRIDGE POWER

The DMN3012LEG, DMN3013LDC, and DMN3022LDC are the first in a new generation of discrete MOSFETs, offering industry-leading efficiency in a package measuring just 3.3mm x 3.3mm, providing significant cost, power and space savings in a range of power conversion and control applications.

Integrating dual MOSFETs in a single package reduces the board space, which typically requires two separate devices, by up to 50%, and when used in DC/DC synchronous buck converters and half-bridge power topologies, reduces the size of many power converter solutions.

Industry-lowest power losses are realized through the Lateral Diffused MOS (LDMOS) design optimizing high-power density, high-efficiency and high-frequency capability along with ultra-low internal inductance, low on-resistance and low capacitance.

The low profile package (1.2mm typ.) meets all designs in computing / tablet PC products.



THE DIODES ADVANTAGE

Improves System Efficiency

- Superior peak power efficiency of 95%
- Low input capacitances provide fast switching speed
- Improved performance at light load
- Optimized for 5V gate drive applications

Reduced System Temperature

- Low on-resistance provides low conduction loss
- Ultra low package inductance reduces switching loss
- Underside pad improves thermal resistance and power handling

Improved Reliability

- Unclamped inductive switch (UIS) ruggedness tested at production

30V COMPLEMENTARY

Part Number	ESD Diode	V _{DS}	V _{GS}	I _{DS} (A)	P _D (W)	R _{DS(ON)} (mΩ max) at V _{GS} =			V _{GS(th)} (V)	C _{iss} typ (pF)	Q _G typ @ V _{GS} = 4.5V (nC)	Q _C typ @ V _{GS} = 10V (nC)	Automotive Version Avail.	Package
		(V)	(±V)	@T _A =25°C	@T _A =25°C	10V	4.5V	2.5V	Max.					
DMC3730UFL3	Yes	30, 30	8, 8	1.1, 0.7	0.81	-	460, 1500	560, 1500	0.95, 1.1	65.9, 22.6	0.9, 0.38	-	-	X2-DFN1310-6 (Type B)
DMC31D5UDA	Yes	30, 30	12, 12	0.4, 0.22	0.37	-	1500, 5000	2000, 6000	1, 1	22.6, 21.8	0.38, 0.35	-	-	X2-DFN0806-6
DMC31D5UDJ	Yes	30, 30	12, 12	0.22, 0.2	0.35	-	1500, 5000	2000, 6000	1, 1	22.6, 21.8	0.38, 0.35	-	-	SOT963
DMG6601LVT	No	30, 30	12, 12	3.8, 2.5	1.3	55, 110	65, 142	85, 190	1.5, 1.2	422, 541	5.4, 6.5	12.3, 13.8	-	TSOT26
DMC3400SDW	Yes	30, 30	20, 20	0.65, 0.45	0.39	400, 900	700, 1R7	-	1.6, 2.6	55, 54	0.6, 0.6	1.4, 1.3	-	SOT363
DMC3401LDW	Yes	30, 30	20, 20	0.8, 0.55	0.4	400, 900	700, 1700	-	1.6, 2.6	50, 19	0.5, 0.36	1.2, 0.8	-	SOT363
DMC3061SVT	No	30, 30	20, 20	3.4, 2.7	1.08	60, 95	100, 140	-	-	278, 287	3.5, 3.5	6.6, 6.8	-	TSOT26
DMC3071LVT	No	30, 30	20, 20	4.6, 3.3	1.1	50, 95	90, 140	-	2.5, 2.5	190, 254	2.1, 3.1	4.5, 6.5	-	TSOT26
ZXMC3AMC	No	30, 30	20, 20	3.7, 2.7	2.45	120, 210	180, 330	-	3, 3	190, 206	2.3, 3.8	3.9, 6.4	-	W-DFN3020-8 (Type B)
DMC3025LNS	No	30, 30	20, 20	7.2, 6.8	1.8	25, 28	35, 38	-	2, 2.4	500, 1188	4.6, 9.5	-	-	PowerDI3333-8 (Type UXB)
DMC3016LDV	No	30, 30	20, 20	21, 15	1.8	12, 25	17, 38	-	2, 2.4	-	9.5	21, 19.7	-	PowerDI3333-8 (Type UXC)
DMC3025LDV	No	30, 30	20, 20	15, 15	1.9	25	35, 38	-	2, 2.4	-	4.6, 9.5	9.8, 19.7	-	PowerDI3333-8 (Type UXC)
DMC3016LNS	No	30, 30	20, 20	9, 6.8	2	16, 28	20, 38	-	2, 2.4	1184, 1188	9.5, 9.5	-	-	PowerDI3333-8 (Type UXB)
DMC3016LSD	No	30, 30	20, 20	8.2, 6.2	1.2	16, 28	20, 38	-	3, 3	1415, 1241	11.3, 10.9	25.1, 22	-	SO-8
DMC3025LSD	No	30, 30	20, 20	8.5, 5.5	1.2	20, 45	32, 85	-	2, 2	501, 590	4.6, 5.1	9.8, 10.5	Y	SO-8
DMC3028LSDX	No	30, 30	20, 20	7.2, 7.6	1.2	27, 25	35, 41	-	3, 3	641, 1241	6, 10.9	13.2, 22	Y	SO-8
ZXMC3A18DN8	No	30, 30	20, 20	7.6, 6.3	1.8	25, 35	30, 50	-	1, 1	1800, 1603	19.4, 25@5V	36, 45	-	SO-8
ZXMC3F31DN8	No	30, 30	20, 20	7.3, 5.3	2.1	24, 45	39, 80	-	3, 3	608, 670	-	12.9, 12.7	-	SO-8
DMC3028LSD	No	30, 30	20, 20	7.1, 7.4	2.1	28, 25	45, 41	-	3, 3	472, 1678	5.2, 16.4	10.5, 31.6	-	SO-8
ZXMC3A16DN8	No	30, 30	20, 20	6.4, 5.4	2.1	35, 48	50, 70	-	1, 1	796, 970	9.2, 12.9	17.5, 24.9	Y	SO-8
ZXMC3A17DN8	No	30, 30	20, 20	5.4, 4.4	2.1	50, 70	65, 110	-	1, 1	600, 630	6.9@5V, 8.3@5V	12.2, 15.8	-	SO-8
DMC3021LSD	No	30, 30	20, 20	8.5, 7	2.5	21, 39	32, 53	-	2.1, 2.2	767, 1002	7.8, 10	16.1, 21.1	Y	SO-8
DMC3032LSD	No	30, 30	20, 20	8.1, 7	2.5	32, 39	46, 53	-	2.1, 2.2	404.5, 1002	-, 10.1	9.2, 21.1	-	SO-8
DMC3021LK4	No	30, 30	20, 20	9.4, 9.4	2.75	21	32	-	2.1, 2.2	-	-	-	-	TO252-4

31V – 50V N-CHANNEL



Part Number	ESD Diode	V _{DS} (V)	V _{GS} (±V)	I _{DS} (A)		P _D (W)			R _{DS(ON)} (mΩ max) at V _{GS} =			V _{GS} (th) (V) Max.	C _{ISS} typ (pF)	Q _C typ @ V _{GS} = 4.5V (nC)	Q _C typ @ V _{GS} = 10V (nC)	Automotive Version Avail.	175°C Rated	Package
				@T _A =25°C	@T _A =25°C	10V	4.5V	2.5V										
DMN4020LFDE	N	40	20	8	2.03	20	28	-	2.4	1060	8.8	19.1	-	-	-	-	-	U-DFN2020-6 (Type E)
DMT4008LDFDW	-	40	20	11.8	2	9.5	15.5	-	3	1179	8.3	17.1	-	-	-	-	-	U-DFN2020-6 (Type F)
DMTH4008LDFDW	N	40	20	11.6	2.35	11.5	18	-	3	1030	6.8	14.2	Y	Y	-	-	-	U-DFN2020-6 (SWP) (Type F)
DMT4008LDFD	N	40	20	11.8	2	9.5	15.5	-	3	-	8.3	17.1	-	-	-	-	-	U-DFN2020-6 (Type F)
DMN4008LFG	N	40	20	19.2	2.3	7.5	10	20 @3.3V	3	3537	34	74	-	-	-	-	-	PowerDI3333-8
DMN4010LFG	N	40	20	11.5	2.45	12	15	-	3	1810	17	37	-	-	-	-	-	PowerDI3333-8
DMT43M8LFV	N	40	20	87	2.25	4	5.5	-	-	3212	21.1	44.4	-	-	-	-	-	POWERDI3333-8
DMT4011LFG	N	40	20.16	10.8	2	11.5	17.8	-	3	-	7	15.1	-	-	-	-	-	PowerDI3333-8
DMTH43M8LFG	N	40	20	24	2.62	3	-	-	2.5	-	-	40.1	Y	Y	-	-	-	PowerDI3333-8
DMT4008LFV	N	40	20	54.8*	1.9	7.9	12	-	3	1179	8.3	17.1	-	-	-	-	-	PowerDI3333-8 (Type UX)
DMT47M2SFVW	-	40	20	491*	27.1*	7.5	-	-	4	897	-	12.1	Y	-	-	-	-	PowerDI3333
DMN4034SSS	N	40	20	7.2	2.8	34	59	-	3	453	4.9	10	-	-	-	-	-	SO-8
DMT4011LSS	Y	40	20	10.6	2.02	11.5	17.6	-	-	829	7.2	14.3	-	-	-	-	-	SO-8
DMT4008LSS	N	40	20	12.8	2.09	8.5	12.5	-	3	-	9.4	18.6	-	-	-	-	-	SO-8
ZXMN4A06G	N	40	20	7	3.9	50	75	-	2	770 @40V	-	18.2	Y	-	-	-	-	SOT223
DMTH4001SPS	N	40	20	100*	187.5*	1	-	-	4	10787	85	144	Y	Y	-	-	-	PowerDI5060-8
DMT4002LPS	N	40	20	100*	2.3	1.8	3.1	-	3	6771	55.2	116.1	-	-	-	-	-	PowerDI5060-8
DMNH4011SPS	N	40	20	13	2.5	10	-	-	4	-	-	25.5	Y	Y	-	-	-	PowerDI5060-8
DMT4004LPS	N	40	20	90*	2.6	2.5	4	-	3	-	35	83	-	-	-	-	-	PowerDI5060-8
DMTH4004LPS	N	40	20	100*	2.6	2.5	4	-	3	-	34.6	82.2	Y	Y	-	-	-	PowerDI5060-8
DMTH4004SPS	N	40	20	100*	3.6	2.7	-	-	4	-	-	68.6	Y	Y	-	-	-	PowerDI5060-8
DMTH4005SPS	N	40	20	100*	2.6	3.7	-	-	4	-	-	49.1	Y	Y	-	-	-	PowerDI5060-8
DMTH4007LPS	N	40	20	100*	2.7	6.5	9.8	-	3	-	12.4	29.1	Y	Y	-	-	-	PowerDI5060-8
DMTH4007SPS	N	40	20	100*	2.8	7.6	-	-	4	-	-	41.9	Y	Y	-	-	-	PowerDI5060-8
DMTH4008LPS	N	40	20	14.4	2.99	8.8	-	-	3	-	7.4	15.3	Y	Y	-	-	-	PowerDI5060-8
DMTH43M8LPS	N	40	20	22	2.7	3.3	5	-	2.5	-	17.6	38.5	Y	Y	-	-	-	PowerDI5060-8
DMTH41M8SPS	N	40	20	100*	3.03	1.8	-	-	4	6968	-	79.5	Y	Y	-	-	-	PowerDI5060-8
DMNH4004SPS	N	40	20	100*	2.8	6	-	-	3.5	2284	-	40	-	Y	-	-	-	PowerDI5060-8
DMNH4005SPS	N	40	20	120*	2.8	4	-	-	3	2847	23	48	Y	Y	-	-	-	PowerDI5060-8
DMN4010LK3	N	40	20	39	2.4	11.5	14.5	-	3	1810	17	37	-	-	-	-	-	TO252 (DPAK)
DMN4030LK3	N	40	20	13.7	2.14	30	50	-	3	604	6.5	12.9	Y	-	-	-	-	TO252 (DPAK)
DMN4040SK3	N	40	20	13.8	4.1	30	54	-	3	945	8.4	18.6	-	-	-	-	-	TO252 (DPAK)
DMN4036LK3	N	40	20	12.2	4.1	36	61	-	3	453	4.9	9.2	-	-	-	-	-	TO252 (DPAK)
DMTH4004SK3	N	40	20	70	3.9	3.2	-	-	4	4305	-	68.8	Y	Y	-	-	-	TO252 (DPAK)
DMTH4007SK3	N	40	20	76	3.1	6	-	-	4	2082	-	41.9	-	Y	-	-	-	TO252 (DPAK)
DMN4026SK3	N	40	20	-	3.4	24	32	-	3	-	-	21.3	-	-	-	-	-	TO252 (DPAK)
DMNH4006SK3	N	40	20	18	3.6	6	-	-	4	-	-	51	Y	Y	-	-	-	TO252 (DPAK)
DMNH4011SK3	N	40	20	50*	2.6	10	-	-	4	-	-	25.5	Y	Y	-	-	-	TO252 (DPAK)
DMTH4004LK3	N	40	20	100*	3.9	3	5	-	3	-	35	83	Y	Y	-	-	-	TO252 (DPAK)
DMTH4005SK3	N	40	20	95*	2.1	4.5	-	-	4	-	-	49.1	Y	Y	-	-	-	TO252 (DPAK)
DMTH4007LK3	N	40	20	70*	2.6	7.3	9.8	-	3	-	12.4	29.1	Y	Y	-	-	-	TO252 (DPAK)
DMTH43M8LK3	N	40	20	17.6	3.1	3.6	-	-	2.5	-	17.6	38.5	Y	Y	-	-	-	TO252 (DPAK)
ZXMN4A06K	N	40	20	10.9	2.15	50	75	-	1	-	-	17.1	-	-	-	-	-	TO252 (DPAK)
DMTH4004SCTB	N	40	20	100*	4.7	3	-	-	4	-	-	68.6	Y	Y	-	-	-	TO263AB (D2PAK)
DMTH4002SCTB	N	40	20	192*	166.7*	3	-	-	4	7180	-	77.5	-	Y	-	-	-	TO263AB (D2PAK)
DMNH45M7SCT	N	40	20	220*	240*	6	-	-	3	4043	31.6	64.7	-	Y	-	-	-	TO220AB
DMT4003SCT	N	40	20	205*	2.4	3	-	-	4	6865	-	75.6	-	-	-	-	-	TO220AB
DMTH4005SCT	N	40	20	100*	2.8	4.7	-	-	4	3062	-	49.1	-	-	-	Y	-	TO220-3
DMNH4005SCT	N	40	20	150*	165*	-	4	-	3	-	23	48	Y	Y	-	-	-	TO220AB
DMT4005SCT	N	40	20	100*	2.3	4.7	-	-	4	-	-	49.1	-	-	-	-	-	TO220-3
DMN4060SVT	N	45	20	6.1	1.8	46	62	-	3	-	-	22.4	-	-	-	-	-	TSOT26
DMN55D0UT	Y	50	12	0.16	0.2	-	4000 @4V	5000	1	25 @10V	0.295 @4V	-	-	-	-	-	-	SOT523
DMN53D0LT	Y	50	20	0.35	0.3	1600	2500	4500	1.5	46	0.6	-	-	-	-	-	-	SOT523
DMN5L06TK	Y	50	20	0.28	0.15	-	2000 @5V	2500	1.2	50	-	-	-	-	-	-	-	SOT523
DMB54D0UV**2	Y	50	12	0.16	0.25	-	4000 @4V	5000	1	25 @10V	-	-	-	-	-	-	-	SOT563
DMB53D0UV**1	Y	50	12	0.16	0.25	-	4000	5000	1	-	-	-	-	-	-	-	-	SOT563

* @TC =25°C **1 N+NPN **2 N+PNP

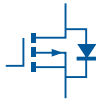
31V – 50V N-CHANNEL



Part Number	ESD Diode	V _{DS}	V _{GS}	I _{DS} (A)	P _D (W)	R _{DS(ON)} (mΩ max) at V _{GS} =			V _{GS} (th) (V) Max.	C _{ISS} typ (pF)	Q _C typ @ V _{GS} = 4.5V (nC)	Q _C typ @ V _{GS} = 10V (nC)	Automotive Version Avail.	175°C Rated	Package
		(V)	(±V)	@T _A =25°C	@T _A =25°C	10V	4.5V	2.5V							
DMN53D0LW	N	50	20	0.36	0.42	2000	3000 @5V	-	1.5	45.8	0.6	1.2	-	-	SOT323
DMN5L06WK	Y	50	20	0.3	0.25	-	2000 @5V	2500	1	50	-	-	-	-	SOT323
BSSI38W	N	50	20	0.2	0.2	3500	-	-	1.5	50 @10V	-	-	-	-	SOT323
DMB53DOUDW**1	Y	50	12	0.16	0.25	-	4000	5000	1	-	-	-	-	-	SOT363
DMB54DOUDW**2	Y	50	12	0.16	0.25	-	4000	5000	1	-	-	-	-	-	SOT363
BSSI38	N	50	20	0.2	0.3	3500	-	-	1.5	50 @10V	-	-	-	-	SOT23
DMN53D0U	Y	50	12	0.3	0.52	-	2000 @5V	2500	1	37	0.6	-	-	-	SOT23
DMN53D0L	Y	50	20	0.5	0.54	1600	2500	4500	1.5	46	0.6	-	Y	-	SOT23
BSN20	N	50	20	0.5	0.6	1800	2000	-	1.5	21.8 @10V	-	0.8	-	-	SOT23
DMN5L06K	Y	50	20	0.3	0.35	-	2000 @5V	2500	1	50	-	-	Y	-	SOT23
BSSI38K	Y	50	20	0.31	0.54	-	3500	-	1.5	-	0.45	0.95	-	-	SOT23
DMT5015LDF	N	50	20	9.1	1.97	15	23	-	2	902	6	14	-	-	U-DFN2020-6 (Type F)
DMN5040LSS	N	50	20	5.2	1.6	40	60	-	3	-	6.5	14.5	-	-	SO-8

**1 N+NPN **2 N+PNP

31V – 50V P-CHANNEL



Part Number	ESD Diode	V _{DS}	V _{GS}	I _{DS} (A)	P _D (W)	R _{DS(ON)} (mΩ max) at V _{GS} =		V _{GS} (th) (V) Max.	C _{ISS} typ (pF)	Q _C typ @ V _{GS} = 4.5V (nC)	Q _C typ @ V _{GS} = 10V (nC)	Automotive Version Avail.	175°C Rated	Package
		(V)	(±V)	@T _A =25°C	@T _A =25°C	10V	4.5V							
DMP4065S	N	40	20	3.4	1.4	80	100	3	587	6.1	12.2	Y	-	SOT23
DMP4047LFDE	N	40	20	6	2.1	33	50	2.2	1382	11.2	23.2	-	-	U-DFN2020-6 (Type E)
ZXMP4A57E6	N	40	20	3.7	1.7	80	150	3	833	7	15.8	-	-	SOT26
DMP4025SFG	N	40	20	7.2	1.95	25	45	1.8	1643	14	33.7	-	-	PowerDI3333-8
DMPH4029LFG	N	40	20	8	2.8	29	45	3	1626	17	34	Y	Y	PowerDI3333-8
DMP4013LFG	N	40	20	10.3	2.1	13	18	3	3426	32.5	68.6	Y	-	PowerDI3333-8
DMP4050SSS	N	40	20	6	2.8	50	79	3	674	6.9	13.9	-	-	SO-8
DMP4025LSS	N	40	20	8	2.4	25	45	1.8	1640	14	33.7	Y	-	SO-8
ZXMP4A16G	N	40	20	6.4	3.9	60	100	-	1007	13.6 @5V	26.1	-	-	SOT223
DMP4013SPS	N	40	20	11	3.4	15	23	3	4004	31	67	Y	-	PowerDI5060-8
DMP4011SPS	N	40	20	11.7	2.3	10	14	2.5	2747	25	52	Y	-	PowerDI5060-8
DMPH4013SPS	N	40	20	69*	3.3	13	23	3	4763	39	87	Y	Y	PowerDI5060-8
DMP4025LK3	N	40	20	8.6	2.78	25	45	1.8	1643	14	33.7	Y	-	TO252 (DPAK)
ZXMP4A16K	N	40	20	9.9	4.2	60	100	-	965	16.5 @5V	29.6	-	-	TO252 (DPAK)
DMP4051LK3	N	40	20	10.5	4.18	51	85	3	674	7	14	-	-	TO252 (DPAK)
DMP4011SK3	N	40	20	14	3.1	11	19	2.5	2747	25	52	Y	-	TO252 (DPAK)
DMP4047SK3	N	40	20	20*	2.7	45	55	3	1328	11.2	23.2	-	-	TO252 (DPAK)
DMPH4023SK3	N	40	20	50*	3.6	26	-	3	1091	-	18.7	Y	Y	TO252 (DPAK)
DMPH4013SK3	N	40	20	55*	3.7	15	23	3	4004	31	67	Y	Y	TO252 (DPAK)
DMP4015SSS	N	40	25	10.1	1.82	11	15	2.5	4234	47.5 @-5V	-	Y	-	SO-8
DMPH4015SSS	N	40	25	11.4	1.8	11	15	2.5	4234	42.7	91	-	-	SO-8
DMPH4015SPS	N	40	25	12	2.6	11	15	2.5	4234	42.7	91	Y	Y	PowerDI5060-8
DMP4015SPS	N	40	25	11	2.1	11	15	2.5	4234	47.5 @-5V	-	-	-	PowerDI5060-8
DMP4015SK3	N	40	25	14	3.5	11	15	2.5	4234	47.5 @-5V	-	-	-	TO252 (DPAK)
DMPH4015SK3	N	40	25	14	3.3	11	15	2.5	4234	42.7	91	-	Y	TO252 (DPAK)
DMP4010SK3	N	40	25	15	3.3	9.9	14	2.5	4234	42.7	91	Y	-	TO252 (DPAK)
BS250F	N	45	20	0.09	0.33	14000	-	3.5	25 @-10V	-	-	-	-	SOT23
BS250P	N	45	20	0.23	0.7	14000	-	3.5	60 @-10V	-	-	-	-	E-Line
DMP56D0UFB	Y	50	8	0.2	0.425	-	6000 @-4V	1.2	50.54	0.58	-	-	-	X1-DFN1006-3
DMP58D0LFB	Y	50	20	0.31	1.22	-	8000 @-5V	2.1	27	-	-	-	-	X1-DFN1006-3
BSS84W	N	50	20	0.13	0.2	-	10000 @5V	2	45 max	-	-	-	-	SOT323
DMP510DLW	N	50	20	0.174	0.47	-	10000 @5V	2	24.6	0.28	0.56	-	-	SOT323
BSS84	N	50	20	0.13	0.3	-	10000 @5V	2	24.6	0.28	0.59	-	-	SOT23
DMP510DL	N	50	30	0.18	0.5	-	10000 @-5V	2	24.6	-	-	-	-	SOT23

* @TC = 25°C

40V – 50V DUAL N-CANNEL



Part Number	ESD Diode	V _{DS}	V _{GS}	I _{DS} (A)	P _D (W)	R _{DS(ON)} (mΩ max) at V _{GS} =				V _{GS} (th)	C _{ISS} typ (pF)	Q _C typ @ V _{GS} = 4.5V (nC)	Q _C typ @ V _{GS} = 10V (nC)	Automotive Version Avail.	175°C Rated	Package
		(V)	(±V)	@T _A =25°C	@T _A =25°C	10V	4.5V	2.5V	1.8V	Min.						
DMT47M2LDV	N	40	20	30.2*	14.8*	10.8	15	-	-	2.3	891	6.72	14	Y	-	PowerDI3333
DMN4034SSD	N	40	20	6.3	1.25	34	59	-	-	3	453	4.9	10	-	-	SO-8
DMN4031SSD	N	40	20	7	2.6	31	50	-	-	3	945	8.4	18.6	Y	-	SO-8
DMN4027SSD	N	40	20	7.1	2.1	27	47	-	-	3	604	6.3	12.9	-	-	SO-8
DMNH4026SSD	N	40	20	7.5	2	24	32	-	-	3	1060	8.8	19.1	Y	-	SO-8
DMNH4015SSD	N	40	20	8.6	2	15	20	-	-	3	1938	15	33	Y	-	SO-8
DMN4026SSD	N	40	20	9	1.8	24	32	-	-	3	1060	8.8	19.1	-	-	SO-8
DMTH4014LPD	N	40	20	10.6	2.41	15	25	-	-	3	733	5.2	10.2	Y	Y	PowerDI5060-8 (Type C)
DMTH4011SPD	N	40	20	11.1	2.6	15	-	-	-	4	805	-	10.6	Y	Y	PowerDI5060-8 (Type C)
DMTH4007SPD	N	40	20	45*	37.5*	8.6	-	-	-	4	2026	-	41.9	Y	Y	PowerDI5060-8 (Type C)
DMTH4008LPDW	N	40	20	46.2*	39.4*	12.3	17.5	-	-	2.3	881	5.8	12.3	Y	Y	PowerDI5060
DMN5010VAK	Y	50	20	0.28	0.25	-	2000 @5V	2500	3000	1	50 max	-	-	-	-	SOT563
DMN5L06VAK	Y	50	20	0.28	0.25	-	2000 @5V	2500	3000	1	50 max	-	-	-	-	SOT563
DMN5L06VK	Y	50	20	0.28	0.25	-	2000 @5V	2500	3000	1	50 max	-	-	Y	-	SOT563
DMN53D0LV	Y	50	20	0.35	0.43	1600	2500	4500	-	1.5	46	0.6	-	-	-	SOT563
BSS138DW	N	50	20	0.2	0.2	3500	-	-	-	1.5	50 @10V max	-	-	Y	-	SOT363
DMN53D0LDW	Y	50	20	0.36	0.31	1600	2500	4500	-	1.5	46	0.6	-	Y	-	SOT363
DMN5L06DMK	Y	50	20	0.305	0.4	-	2000 @5V	2500	3000	1	50	-	-	Y	-	SOT26

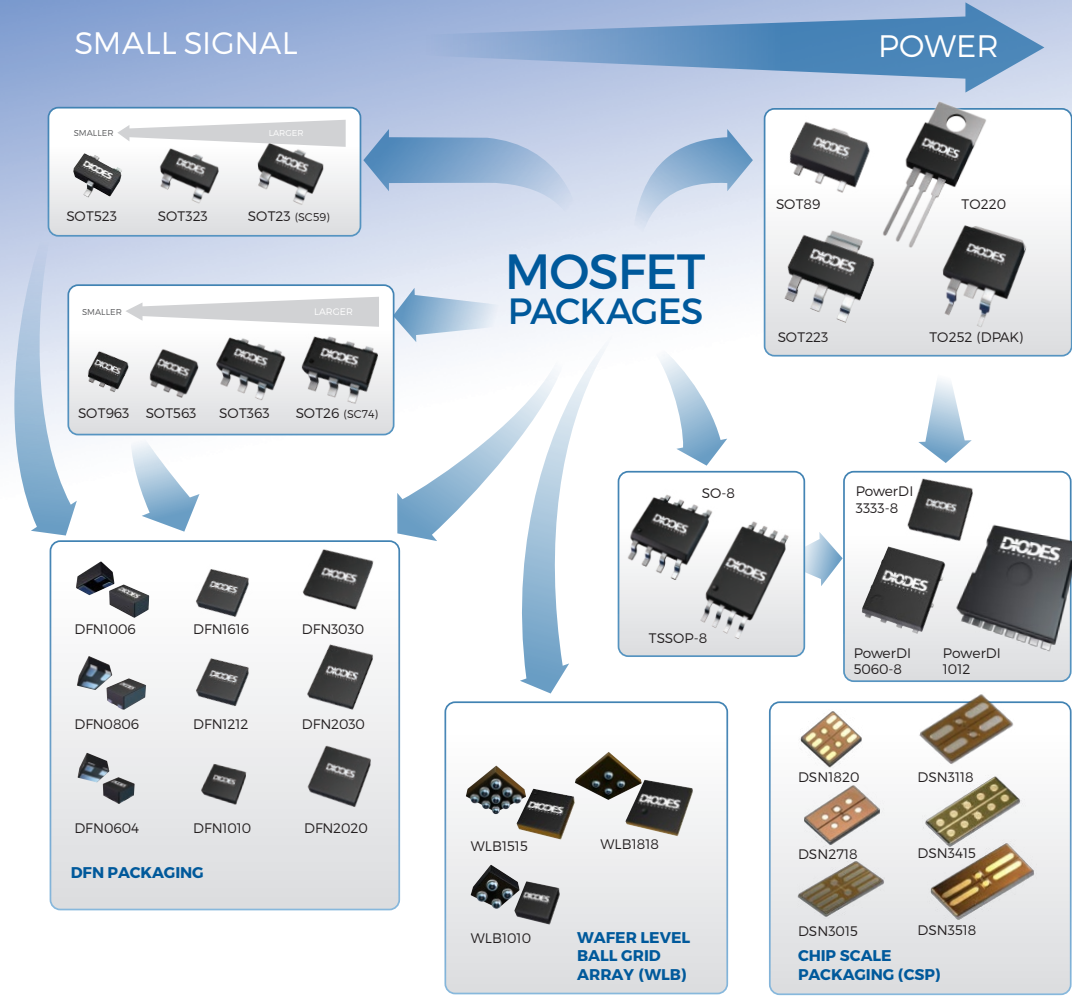
* @TC =25°C

40V – 60V DUAL P-CHANNEL



Part Number	ESD Diode	V _{DS}	V _{GS}	I _{DS} (A)	P _D (W)	R _{DS(ON)} (mΩ max) at V _{GS} =		V _{GS} (th) (V) Max.	C _{ISS} typ (pF)	Q _C typ @ V _{GS} = 4.5V (nC)	Q _C typ @ V _{GS} = 10V (nC)	Automotive Version Avail.	Package
		(V)	(±V)	@T _A =25°C	@T _A =25°C	10V	4.5V						
DMP4050SSD	N	40	20	5.2	2.14	50	79	3	674	6.9	13.9	Y	SO-8
DMP4047SSD	N	40	20	5.1	1.8	45	55	3	1154	10.6	21.5	Y	SO-8
DMP4025LSD	N	40	20	7.6	2.14	25	45	1.8	1640	14	33.7	-	SO-8
DMP56D0UV	Y	50	8	0.16	0.4	-	6000 @4V	1.2	50.54	0.58	-	-	SOT563
BSS84V	N	50	20	0.13	0.15	-	110000 @5V	2	45 (max)	-	-	-	SOT563
DMP58D0SV	Y	50	20	0.16	0.4	-	8000 @5V	2.1	27	-	-	-	SOT563
BSS84DW	N	50	20	0.13	0.3	-	10000 @5V	2	45 (max)	-	-	-	SOT363
ZXMP6A17DN8	N	60	20	3.4	2.15	125	190	-	637	9	17.7	-	SO-8
ZXMP6A16DN8	N	60	20	3.9	2.15	85	125	-	1021	12.1 @5V	24.2	Y	SO-8
DMP6110SSD	N	60	20	4.5	1.7	105	130	3	969	8.2	17.2	Y	SO-8
DMP6050SSD	N	60	20	4.8	1.7	55	70	3	1293	11.9	24	-	SO-8
ZXMP6A18DN8	N	60	20	4.8	2.1	55	80	-	1580	23 @5V	44	-	SO-8
DMPH6050SSD	N	60	20	5.2	2	48	60	3	1525	14.5	30.6	Y	SO-8
DMPH6050SPD	N	60	20	6.3	2.8	48	60	3	1525	14.5	30.6	Y	PowerDI5060-8 (Type C)

MOSFET PACKAGE EVOLUTION



35V – 60V COMPLEMENTARY



Part Number	ESD Diode	V_{DS}	V_{GS}	I_{DS} (A)	P_D (W)	$R_{DS(ON)}$ (m Ω max) at $V_{GS}=$		$V_{GS(th)}$ (V) Max.	C_{ISS} typ (pF)	Q_G typ @ $V_{GS} = 4.5V$ (nC)	Q_G typ @ $V_{GS} = 10V$ (nC)	Automotive Version Avail.	Package
		(V)	($\pm V$)	@ $T_A=25^\circ C$	@ $T_A=25^\circ C$	10V	4.5V						
DMG4511SK4	N	35, 35	20, 20	13, 12	4.1	35, 45	65, 65	3, 3	850 @25V, 985 @25V	8.8, 9.5	18.7, 19.2	-	TO252-4
DMC4047LSD	N	40, 40	20, 20	6.9, 5.1	1.8	24, 45	32, 55	2.4, 2.2	1060, 1154	8.8, 10.6	19.1, 21.5	-	SO-8
DMC4029SSD	N	40, 40	20, 20	9, 6.5	1.8	24, 45	32, 55	3, 3	1060, 1154	8.8, 10.6	19.1, 21.5	-	SO-8
DMC4040SSD	N	40, 40	20, 20	7.5, 7.3	2.14	25, 25	40, 45	1.8, 1.8	1790, 1643	16, 14	37.6, 33.7	Y	SO-8
DMC4028SSD	N	40, 40	20, 20	7.2, 5.2	2.16	28, 50	49, 79	3, 3	604, 674	6.5, 7	12.9, 14	Y	SO-8
DMC4050SSD	N	40, 40	20, 20	5.5, 5.8	2.14	45, 45	60, 60	1.8, 1.8	1790, 1643	-	37.56, 33.66	Y	SO-8
ZXMC4A16DN8	N	40, 40	20, 20	5.2, 4.7	2.1	50, 60	75, 100	-	770 @40V, 1000	-, 15 @5V	17, 26	-	SO-8
DMC4015SSD	N	40, 40	20, 20	12.2, 8.8	1.7	15, 29	20, 45	3, 3	1810, 1626	19, 17	40, 34	-	SO-8
DMC4029SK4	N	40, 40	20, 20	8.3, 6.1	2.9	24, 45	32, 55	3, 3	1060, 1154	8.8, 10.6	19.1, 21.5	-	TO252-4
BSS8402DW	N	60, 50	20, 20	0.115, 0.13	0.2	13500, -	7500 @ 5V, 10000 @ 5V	2.5, 2	22 @25V, 45 @25V(max)	-	-	Y	SOT363
DMG1029SV	N	60, 60	20, 20	0.5, 0.36	1	1700, 4000	3000, 6000	2.5, 3	30 @25V, 25 @-25V	0.3, 0.28	-	-	SOT563
DMC6070LND	N	60, 60	20, 20	3.1, 2.4	1.4	85, 150	120, 250	3, 3	731, 612	5.2, 4.3	11.5, 8.9	-	PowerDI3333-8 (Type UXB)
DMC6040SSD	N	60, 60	20, 20	6.5, 3.9	1.56	40, 110	55, 130	3, 3	1130 @ 15V, 1030	9.4, 9.5	20.8, 19.4	Y	SO-8
ZXMC4559DN8	N	60, 60	20, 20	4.7, 3.9	2.1	55, 85	75, 125	-	1063 @30V, 1021 @-30V	11 @5V, 12.1 @-5V	20.4, 24.2	-	SO-8
ZXMC6A09DN8	N	60, 60	20, 20	5.1, 4.8	2.1	45, 55	70, 80	-	1407 @40V, 1580	12.4 @5V, 23 @5V	24.2, 44	-	SO-8

51V – 99V N-CHANNEL



Part Number	ESD Diode	V _{DS}	V _{GS}	I _{DS} (A)	P _D (W)	R _{DS(ON)} (mΩ max) at V _{GS} =				V _{GS} (th) (V)	C _{iss} typ (pF)	Q _G typ @ V _{GS} = 4.5V (nC)	Q _G typ @ V _{GS} = 10V (nC)	Automotive Version Avail.	175°C Rated	Package
		(V)	(±V)	@T _A =25°C	@T _A =25°C	10V	4.5V	2.5V	1.8V	Max.		@ V _{GS} = 4.5V (nC)				
DMNH6011LK3	N	55	12	80*	3	12	18	-	-	2	3077 @30V	23.4	49.1	Y	Y	TO252 (DPAK)
DMN6ID8L	Y	60	12	0.47	0.61	-	1800 @5V	2400 @3V	-	2	12.9 @12V	0.74 @5V	-	Y	-	SOT23
DMT6008LFG	Y	60	12	60*	41*	7.5	11.5	-	-	2	2713	22.4	50.4	-	-	PowerDI3333-8
DMN65D9L	Y	60	16	0.335	0.67	4000	4100 @5V	4200 @4V	-	2.5	41	0.4	-	-	-	SOT23
DMT6015LFV	Y	60	16	35*	30*	16	22	-	-	2.5	1103	8.9	18.9	-	-	PowerDI3333-8 (Type UX)
DMT69M8LFV	N	60	16	45*	42*	9.5	13.3	-	-	3	1925	15.6	33.5	-	-	PowerDI3333-8 (Type UX)
DMTH69M8LFVW	N	60	16	45.4*	29.4*	9.5	13.3	-	-	3	1925	15.6	33.5	Y	Y	PowerDI3333-8
DMT6009LFG	N	60	16	34*	19.2*	10	11.7	-	-	2	1925	15.6	33.5	-	-	PowerDI3333-8
DMT6015LSS	Y	60	16	9.2	2.1	16	21	-	-	2.5	1103	8.9	18.9	-	-	SO-8
DMT6009LPS	N	60	16	87*	113*	10	12	-	-	2	1925	15.6	33.5	-	-	PowerDI5060-8
DMTH6009LPS	N	60	16	89.5*	136*	10	12	-	-	2	1925	15.6	33.5	Y	Y	PowerDI5060-8
DMT6015LPS	Y	60	16	31*	2.7	16	24	-	-	2.5	1103	8.9	18.9	-	-	PowerDI5060-8
DMTH6009LK3	N	60	16	59*	60*	10	12.8	-	-	2	1925	15.6	33.5	Y	Y	TO252 (DPAK)
DMT6009LK3	N	60	16	57*	50*	10	12.8	-	-	2	1925	15.6	33.5	-	-	TO252 (DPAK)
DMT6009LJ3	N	60	16	74.5*	83.3*	10	12.8	-	-	2	1925	15.6	33.5	-	-	TO251
DMT6009LCT	N	60	16	37.2*	25*	12	14.5	-	-	2	1925	15.6	33.5	-	-	TO220-3
DMN65D8LFB	Y	60	20	0.26	0.84	3000	4000 @5V	-	-	2	25 @25V	-	-	-	-	X1-DFN1006-3
DMN62D1LFB	Y	60	20	0.32	0.5	-	2000 @4V	2500	3000	1	32 @25V	0.45	-	-	-	X1-DFN1006-3
DMN62D1SFB	Y	60	20	0.41	0.47	1400	1600	-	-	2.3	40 @40V	0.73	1.39	-	-	X1-DFN1006-3
DMN66D0LT	Y	60	20	0.115	0.2	5000	6000 @5V	-	-	2	23 @25V	-	-	-	-	SOT523
2N7002T	N	60	20	0.115	0.15	13500 @125C	7500 @5V	-	-	2	22 @25V	-	-	-	-	SOT523
DMN601TK	Y	60	20	0.3	0.15	2000	3000 @5V	-	-	2.5	50 max @50V	-	-	-	-	SOT523
DMN63D1LT	Y	60	20	0.32	0.33	2000	3000@5V	-	-	2.5	30 @25V	0.392	-	-	-	SOT523
DMN62D0UT	Y	60	20	0.32	0.34	-	2000	2500	3000	1	32	0.5	-	-	-	SOT523
DMN6ID9UT	Y	60	20	0.35	0.26	-	2000 @5V	2500	3500	1	28.5	0.4	-	-	-	SOT523
DMN62D0LFD	Y	60	20	0.31	0.48	-	2000 @4V	2500	3000	1	31 @25V	0.5	-	-	-	X1-DFN1212-3
DMN62D1LFD	Y	60	20	0.4	0.5	-	2000 @4V	2500	3000	1	36 @25V	0.55	-	Y	-	U-DFN1212-3 (Type C)
DMN62D0SFD	Y	60	20	0.63	0.89	2000	3000 @5V	-	-	2.5	30.2 @25V	0.39	0.87	-	-	X1-DFN1212-3
DMN6070SFCL	N	60	20	3	1.8	85	120 @4V	-	-	3	606 @20V	5.6	12.3	-	-	X1-DFN1616-6 (Type E)
DMN66D0LW	Y	60	20	0.115	0.2	5000	6000 @5V	-	-	2	23 @25V	-	-	-	-	SOT323
2N7002W	N	60	20	0.115	0.2	13500 @125C	7500 @5V	-	-	2	22 @25V	-	-	-	-	SOT323
DMN67D8LW	N	60	30	0.24	0.47	5000	7500 @5V	-	-	2.5	22 @ 5V	0.361	0.821	-	-	SOT323
DMN601WK	Y	60	20	0.3	0.2	2000	3000	-	-	2.5	50 max @25V	-	-	Y	-	SOT323
DMN65D8LW	Y	60	20	0.3	0.43	3000	4000 @5V	-	-	2	22 @25V	0.43	0.87	-	-	SOT323
DMN6ID9UW	Y	60	20	0.34	0.44	-	2000 @5V	2500	3500	1	28.5	0.4	-	Y	-	SOT323
DMN62D0UW	Y	60	20	0.34	0.47	-	2000	2500	3000	1	32	0.5	-	-	-	SOT323
DMN63D1LW	Y	60	20	0.38	0.41	2000	3000 @5V	-	-	2.5	30 @25V	0.3	-	-	-	SOT323
ZVN3306F	N	60	20	0.15	0.33	5000	-	-	-	2.4	35 max @18V	-	-	-	-	SOT23
BS170F	N	60	20	0.15	0.33	5000	-	-	-	3	60 @10V	-	-	-	-	SOT23
VN10LF	N	60	20	0.15	0.33	5000	7500 @5V	-	-	2.5	-	-	-	-	-	SOT23
ZVN4106F	N	60	20	0.2	0.35	2500	5000 @5V	-	-	3	35 max @25V	-	-	-	-	SOT23
2N7002	N	60	20	0.21	0.54	5000	7500 @5V	-	-	2.5	22 @25V	223	-	-	-	SOT23
2N7002H	N	60	20	0.21	0.51	-	7500 @5V	-	-	3	26 @25V	0.352	-	-	-	SOT23
DMN67D7L	N	60	40	0.21	0.57	5000	-	-	-	2.5	22 @25V	0.361	0.821	-	-	SOT23

* @TC = 25°C

51V – 99V N-CANNEL (CONTINUED)



Part Number	ESD Diode	V _{DS} (V)	V _{GS} (±V)	I _{DS} (A) @T _A =25°C	P _D (W) @T _A =25°C	R _{DS(ON)} (mΩ max) at V _{GS} =				V _{GS} (th) (V) Max.	C _{ISS} typ (pF)	Q _C typ @ V _{GS} = 4.5V (nC)	Q _C typ @ V _{GS} = 10V (nC)	Automotive Version Avail.	175°C Rated	Package
						10V	4.5V	2.5V	1.8V							
DMN67D8L	N	60	30	0.21	0.57	5000	7500 @5V	-	-	2.5	22 @25V	0.361	0.821	-	-	SOT23
2N7002A	Y	60	20	0.22	0.54	5000 @125C	6000 @5V	-	-	2	23 @25V	-	-	Y	-	SOT23
BS870	N	60	20	0.25	0.3	5000	-	-	-	3	22 @10V	-	-	Y	-	SOT23
DMN601K	Y	60	20	0.3	0.35	2000	3000 @5V	-	-	2.5	50 max @25V	-	-	-	-	SOT23
2N7002E	N	60	20	0.3	0.37	3000	4000	-	-	2.5	22 @25V	0.223	-	-	-	SOT23
DMN65D8L	Y	60	20	0.31	0.54	3000	4000 @5V	-	-	2	22 @25V	0.43	0.87	Y	-	SOT23
2N7002K	Y	60	20	0.38	0.54	2000	3000 @5V	-	-	2.5	30 @25V	0.3	-	-	-	SOT23
DMN61D9U	Y	60	20	0.38	0.54	-	2000 @5V	2500	3500	1	28.5	0.4	-	-	-	SOT23
DMN62D0U	Y	60	20	0.38	0.59	-	2000	2500	3000	1	32	0.5	-	-	-	SOT23
DMN63DIL	Y	60	20	0.38	0.56	2000	3000 @5V	-	-	2.5	30 @25V	0.304	-	-	-	SOT23
MMBF170	N	60	20	0.5	0.3	5000	5300	-	-	3	22 @10V	-	-	Y	-	SOT23
ZXMN6A07F	N	60	20	1.4	0.806	250	350	-	-	3	166 @40V	1.65 @5V	3.2	-	-	SOT23
DMN6140L	N	60	20	2.3	1.3	140	170	-	-	3	315 @40V	4.1 @5V	8.6	Y	-	SOT23
DMN6075S	N	60	20	2.5	1.15	85	120	-	-	3	606 @20V	5.6	12.3	Y	-	SOT23
DMN6040SFDE	N	60	20	6.5	2.03	38	47	-	-	3	1287 @25V	10.4	22.4	Y	-	U-DFN2020-6 (Type E)
DMT6016LDFD	N	60	20	8.9	1.9	16	27	-	-	3	864	8.4	17	-	-	U-DFN2020-6 (Type F)
DMTH6016LDFW	N	60	20	9.4	2.3	18	27.5	-	-	3	925	7.5	15.3	Y	Y	U-DFN2020-6 (SWP) (Type F)
DMT6012LDFD	N	60	20	9.5	1.9	14	21	-	-	2.3	785	7.3	13.6	-	-	U-DFN2020-6 (Type F)
DMT6013LDFD	N	60	20	10	1.9	15	21.5	-	-	2.3	1081	8.5	15	-	-	U-DFN2020-6 (Type F)
DMN6040SVT	N	60	20	6.3	1.8	44	60	-	-	3	1287 @25V	10.4	22.4	Y	-	TSOT26
ZXMN6A08E6	N	60	20	3.5	1.7	80	150	-	-	-	459 @40V	3.7	5.8	Y	-	SOT26
DMN6069SFG	N	60	20	18*	2.4	50	63	-	-	3	740	6.4	14	Y	-	PowerDI3333-8
DMN6013LFG	N	60	20	10.3*	2.1	13	18	-	-	3	2577	26.6	55.4	Y	-	PowerDI3333-8
DMT6010LFG	N	60	20	30*	2.2	7.5	11.5	-	-	2	2090	19.3	41.3	-	-	PowerDI3333-8
DMTH6005LFG	N	60	20	100*	2.38	4.1	7	-	-	2.5	3150	23.6	48.7	-	Y	PowerDI3333-8
DMT6005LFG	N	60	20	100*	1.98	4.1	7	-	-	2.5	3150	23.6	48.7	-	-	PowerDI3333-8
DMN6017SFV	N	60	20	35*	2	18	20	-	-	3	2711 @15V	26	55	-	-	PowerDI3333-8 (Type UX)
DMT615MLFV	Y	60	20	38*	1.76	16	26	-	-	3	1039	7.8	15.5	-	-	PowerDI3333-8
DMT69M5LFVW	N	60	20	40.6*	2.74	8.3	12.5	-	-	2.5	1406	15.4	28.4	Y	-	PowerDI3333-8
DMTH6016LFVW	N	60	20	41*	2.38	16	27	-	-	2.5	939	7.3	15.1	Y	Y	PowerDI3333-8 (SWP) (Type UX)
DMT6012LFV	Y	60	20	43.3*	1.95	12	15	-	-	2.5	1522 @30V	10.7	22.2	-	-	PowerDI3333-8
DMT69M5LCC	N	60	20	52.1*	2.64	8.3	12.5	-	-	2.5	1406	15.4	28.4	-	-	V-DFN3333-8 (Type B)
DMT68M8LFV	Y	60	20	54.1*	2.7	9.5	13.3	-	-	3	2078	14.4	30	-	-	PowerDI3333-8
DMT67M8LCC	Y	60	20	64.6*	2.2	5.7	8.1	-	-	2.5	2130	20	37.5	Y	-	V-DFN3333-8 (Type B)
DMT6007LFG	N	60	20	80*	2.2	6	8.5	-	-	2	2090	19.3	41.3	Y	-	PowerDI3333-8
ZXMN6A07Z	N	60	20	2.5	2.6	250	350	-	-	3	166 @40V	1.65 @5V	3.2	-	-	SOT89
ZXMN6A11Z	N	60	20	3.6	2.6	120	180	-	-	2.2	330 @40V	3 @5V	5.7	-	-	SOT89
DMN6070SY	N	60	20	4.1	2.1	85	110	-	-	3	588 @30V	5.6	12.3	-	-	SOT89
ZVN3306A	N	60	20	0.27	0.625	5000	-	-	-	2.4	35 max @18V	-	-	-	-	E-Line
VNI0LP	N	60	20	0.27	0.625	5000	7500 @5V	-	-	2.5	60 max @25V	-	-	-	-	E-Line
ZVN2106A	N	60	20	0.45	0.7	2000	-	-	-	2.4	75 max @18V	-	-	-	-	E-Line
ZVN4206A	N	60	20	0.6	0.7	1000	1500 @5V	-	-	3	100 max @25V	-	-	-	-	E-Line
ZVN4206AV	N	60	20	0.6	0.7	1000	1500 @5V	-	-	3	100 max @25V	-	-	-	-	E-Line
ZVN4306AV	N	60	20	1.1	0.85	330	450 @5V	-	-	3	350 max @25V	-	-	-	-	E-Line
ZVN4306A	N	60	20	1.1	1.1	330	450 @5V	-	-	3	350 max @25V	-	5.2	-	-	E-Line
DMN6066SSS	N	60	20	5	2.8	66	97	-	-	3	502	5.4	10.3	-	-	SO-8
DMN6040SSS	N	60	20	5.5	2	40	55	-	-	3	1287 @25V	10.4	22.4	-	-	SO-8
ZXMN6A25N8	N	60	20	5.7	2.8	50	70	-	-	3	1063	11 @5V	20.4	-	-	SO-8
DMN6022SSS	N	60	20	6.9	2.1	29	34 @6V	-	-	-	2110	14	32	-	-	SO-8
DMT6016LSS	N	60	20	9.2	2.1	18	28	-	-	2.5	864	8.4	17	-	-	SO-8

* @TC =25°C

51V – 99V N-CHANNEL (CONTINUED)



Part Number	ESD Diode	V _{DS} (V)	V _{GS} (±V)	I _{DS} (A)		R _{DS(ON)} (mΩ max) at V _{GS} =				V _{GS} (th) (V) Max.	C _{ISS} typ (pF)	Q _C typ @ V _{GS} = 4.5V (nC)	Q _C typ @ V _{GS} = 10V (nC)	Automotive Version Avail.	175°C Rated	Package
				@T _A =25°C	@T _A =25°C	10V	4.5V	2.5V	1.8V							
DMT6017LSS	N	60	20	9.2	2.1	18	23	-	-	2.5	864	8.4	17	-	-	SO-8
DMT616MLSS	N	60	20	10	2.06	14	21	-	-	2.2	785	7.3	13.6	-	-	SO-8
DMT6013LSS	N	60	20	10	2.1	14.3	21	-	-	2.5	1081	8.5	15	-	-	SO-8
DMT6012LSS	Y	60	20	10.4	1.8	11	14	-	-	2	1522	10.7	22.2	-	-	SO-8
DMT6009LSS	N	60	20	10.8	1.6	9.5	12	-	-	2	1925	15.6	33.5	-	-	SO-8
DMT68M8LSS	Y	60	20	12.1	1.9	8.5	12	-	-	3	2107	15.6	31.8	-	-	SO-8
DMT6005LSS	N	60	20	13.5	1.7	6	8.9	-	-	3	2962	23.1	47.1	-	-	SO-8
DMT6010LSS	N	60	20	14	2	8	12	-	-	2	2090	19.3	41.3	-	-	SO-8
DMT6006LSS	-	60	20	14.6	2.08	6.5	10	-	-	2.5	2162	18.1	34.9	-	-	SO-8
DMT67M8LSS	Y	60	20	14.8	2.2	6.6	8.4	-	-	3	2130	20	37.5	-	-	SO-8
ZVN2106G	N	60	20	0.71	2	2000	-	-	-	2.4	75 max @18V	-	-	-	-	SOT223
ZVN4206G	N	60	20	1	2	1000	1500 @5V	-	-	3	100 max @25V	-	-	-	-	SOT223
ZVN4206GV	N	60	20	1	2	1000	1500 @5V	-	-	3	100 max @25V	-	-	-	-	SOT223
ZVN4306GV	N	60	20	2.1	3	330	450 @5V	-	-	3	350 max @25V	-	-	-	-	SOT223
ZVN4306G	N	60	20	2.1	3	330	450 @5V	-	-	3	350 max @25V	-	-	-	-	SOT223
DMN6069SE	N	60	20	4.3	2.2	69	100	-	-	3	825	7.2	16	-	-	SOT223
ZXMN6A11C	N	60	20	4.4	3.9	120	180	-	-	3	330 @40V	3	5.7	-	-	SOT223
DMN6040SE	N	60	20	5	2	40	55	-	-	3	1287 @25V	10.4	22.4	-	-	SOT223
ZXMN6A08C	N	60	20	5.3	3.9	80	150	-	-	-	459 @40V	4 @5V	5.8	Y	-	SOT223
DMN6068SE	N	60	20	5.6	3.7	68	100	-	-	3	502	5.55	10.3	-	-	SOT223
ZXMN6A25G	N	60	20	6.7	3.9	50	70	-	-	-	1063	11 @5V	20.4	-	-	SOT223
ZXMN6A09G	N	60	20	7.5	3.9	40	60	-	-	3	1407 @40V	12.4 @ 5V	24.2	Y	-	SOT223
DMT6016LPS	N	60	20	32*	2.55	15	24	-	-	2.5	864	8.4	17	-	-	PowerDI5060-8
DMTH6016LPS	N	60	20	37.1*	3	16	24	-	-	2.5	864	8.4	17	Y	Y	PowerDI5060-8
DMT6016LPSW	N	60	20	43*	41.67*	16.5	26	-	-	-	864	8.4	17	-	-	PowerDI5060-8 (SWP) (Type UX)
DMTH6009SPS	N	60	20	89.5*	136*	10	13.5	-	-	2.8	1572	13.9	29.3	-	Y	PowerDI5060-8
DMT6010LPS	N	60	20	80*	113*	8	12	-	-	3	2090	19.3	41.3	-	-	PowerDI5060-8
DMTH6010SPS	N	60	20	100*	167*	8	-	-	-	4	2841	-	38.1	-	Y	PowerDI5060-8
DMT68M8LPS	Y	60	20	69.2*	56.8*	7.9	10.8	-	-	3	2078	14.4	30	-	-	PowerDI5060-8
DMNH6008SPS	N	60	20	88*	3.3	8	-	-	-	4	2597	21.2	40.1	Y	Y	PowerDI5060-8
DMT67M8LPSW	Y	60	20	82*	62.5*	6.2	8.5	-	-	2.5	2130	20	37.5	-	-	PowerDI5060-8
DMT64M2LPSW	N	60	20	100*	83.3*	4.4	6.4	-	-	2.5	2799	24.1	46.7	-	-	PowerDI5060-8
DMT6004SPS	N	60	20	100*	139*	3.1	-	-	-	4	4556	-	95.4	-	-	PowerDI5060-8
DMTH62M8LPS	N	60	20	100*	115*	2.8	4.4	-	-	3	4515	47.4	96.3	-	Y	PowerDI5060-8
DMTH62M8SPS	N	60	20	100*	125*	2.8	-	-	-	4	4556	-	95.4	-	Y	PowerDI5060-8
DMT6004LPS	N	60	20	100*	139*	3.1	4.5	-	-	3	4515	47.4	96.3	-	-	PowerDI5060-8
DMT6005LPS	N	60	20	100*	125*	4.5	6.5	-	-	3	2962	23.1	47.1	-	-	PowerDI5060-8
DMTH6002LPS	N	60	20	100*	167*	2	3	-	-	3	6555	63.6	130.8	-	Y	PowerDI5060-8
DMTH6004LPS	N	60	20	100*	138*	3.1	4.5	-	-	3	4515	47.4	96.3	Y	Y	PowerDI5060-8
DMTH6004SPS	N	60	20	100*	167*	3.1	-	-	-	4	4556	-	95.4	Y	Y	PowerDI5060-8
DMTH6005LPS	N	60	20	100*	150*	5.5	10	-	-	3	2962	23.1	47.1	Y	Y	PowerDI5060-8
DMTH6010LPS	N	60	20	100*	136*	8	12	-	-	3	2090	19.3	41.3	Y	Y	PowerDI5060-8
DMTH6006LPSW	N	60	20	100*	100*	6.5	10	-	-	2.5	2162	18.1	34.9	Y	Y	PowerDI5060-8
DMT6002LPS	N	60	20	100*	167*	2	3 @6V	-	-	3	6555	63.6	130.8	-	-	PowerDI5060-8 (Type K)
DMT61M8SPS	N	60	20	205*	139*	1.6	-	-	-	4	8306	-	130.6	-	-	PowerDI5060-8 (Type K)
DMTH61M8SPS	N	60	20	215*	167*	1.6	-	-	-	4	8306	-	130.6	Y	Y	PowerDI5060-8 (Type K)
DMNH6042SPS	N	60	20	24*	2.9	50	65	-	-	3	584 @25V	4.2	8.8	Y	Y	PowerDI5060-8
DMT6012LPSW	Y	60	20	31.5*	3.1	12	17	-	-	2.5	1522	10.7	22.2	-	-	PowerDI5060-8
DMNH6012SPS	N	60	20	50*	3.1	11	-	-	-	4	1926	16.3	35.2	Y	Y	PowerDI5060-8
DMTH6012LPSW	-	60	20	50.5*	2.8	14	21	-	-	2.3	785	7.3	13.6	-	Y	PD15060
DMNH6021SPS	N	60	20	55*	3	23	28	-	-	3	1016	9.5	19.7	Y	Y	PowerDI5060-8

* @TC =25°C

51V – 99V N-CHANNEL (CONTINUED)



Part Number	ESD Diode	V _{DS} (V)	V _{GS} (±V)	I _{DS} (A) @T _A =25°C	P _D (W) @T _A =25°C	R _{DS(ON)} (mΩ max) at V _{GS} =				V _{GS} (th) (V) Max.	C _{iss} typ (pF)	Q _c typ @ V _{GS} = 4.5V (nC)	Q _c typ @ V _{GS} = 10V (nC)	Automotive Version Avail.	175°C Rated	Package
						10V	4.5V	2.5V	1.8V							
DMTH6010LPSW	-	60	20	80*	2.9	8	12	-	-	3	2090	19.3	41.3	Y	Y	PDI5060
DMNH6009SPS	N	60	20	95*	3.3	7.3	15	-	-	3	1882	18.5	37.3	-	Y	PowerDI5060-8
ZXMN6A08K	N	60	20	7.9	2.12	80	150	-	-	3	459 @40V	3.8	5.8	-	-	TO252 (DPAK)
DMN6068LK3	N	60	20	8.5	4.12	68	100	-	-	3	502	5.55	10.3	Y	-	TO252 (DPAK)
ZXMN6A25K	N	60	20	10.7	2.11	50	70	-	-	3	1063	11 @5V	20.4	-	-	TO252 (DPAK)
DMTH6016LK3	N	60	20	10.8	3.2	17	24	-	-	3	864	8.4	17	Y	Y	TO252 (DPAK)
DMN6017SK3	N	60	20	11	3.3	18	20	-	-	3	2711	26	55	-	-	TO252 (DPAK)
ZXMN6A09K	N	60	20	11.8	2.15	40	60	-	-	3	1426	15	29	-	-	TO252 (DPAK)
DMTH6010SK3	N	60	20	16.3	3.1	8	-	-	-	4	2841	-	38.1	Y	Y	TO252 (DPAK)
DMN6040SK3	N	60	20	20*	2.84	40	50	-	-	3	1287 @25V	10.4	22.4	Y	-	TO252 (DPAK)
DMTH6004SK3	N	60	20	100*	180*	3.8	-	-	-	4	4556	-	95.4	Y	Y	TO252 (DPAK)
DMNH6042SK3	N	60	20	25*	3.5	50	65	-	-	3	492	4.2	8.8	Y	Y	TO252 (DPAK)
DMNH6021SK3	N	60	20	50*	3.7	23	28	-	-	3	1143	12.1	20.1	Y	Y	TO252 (DPAK)
DMNH6012LK3	N	60	20	60*	3.8	12	18	-	-	3	1926	16.3	35.2	Y	Y	TO252 (DPAK)
DMTH6010LK3	N	60	20	70*	60*	8	12	-	-	3	2090	19.3	41.3	Y	Y	TO252 (DPAK)
DMTH6005LK3	N	60	20	90*	2.1	5.6	10	-	-	3	2962	23.1	47.1	Y	Y	TO252 (DPAK)
DMTH6004SCTB	N	60	20	100*	136*	3.4	-	-	-	4	4556	-	95.4	Y	Y	TO263AB (D2PAK)
DMT6004SCT	N	60	20	100*	113*	3.65	-	-	-	4	4556	-	95.4	-	-	TO220AB
DMTH6004SCT	N	60	20	100*	136*	3.65	-	-	-	4	4556	-	95.4	-	Y	TO220AB
DMTH6010SCT	N	60	20	100*	125*	7.2	-	-	-	4	1940	-	36.3	-	Y	TO220-3
DMT6005LCT	N	60	20	100*	104*	6	10	-	-	3	2962	23.1	47.1	-	-	TO220-3
DMTH6005LCT	N	60	20	100*	125*	6	10	-	-	3	2962	23.1	47.1	-	Y	TO220-3
DMNH6008SCT	N	60	20	130*	210*	8	-	-	-	4	2596	21	40	Y	Y	TO220AB
DMT6010SCT	N	60	20	98*	104*	7.2	-	-	-	4	1940	-	36.3	-	-	TO220-3
DMT6017LDF	Y	65	16	8.1	1.76	18	23	-	-	2.3	891 @30V	7.5	15.3	-	-	U-DFN2020-6 (Type F)
DMT6017LFV	Y	65	16	36*	2.12	20	23	-	-	2.3	891 @30V	7.5	15.3	-	-	PowerDI3333-8
DMT64M1LPSW	N	65	20	81.7*	44*	4.4	6.3	-	-	2.5	2626 @30V	28.9	51.4	-	-	PowerDI5060-8 (SWP) (Type UX)
DMN68M7SCT	N	68	20	100*	125*	8	-	-	-	3	4260 @30V	36	72.9	-	-	TO220AB
ZXMN7A11G	N	70	20	3.8	3.9	130	190	-	-	-	298 @40V	4.35 @5V	7.4	Y	-	SOT223
ZXMN7A11K	N	70	20	6.1	8.5	130	190	-	-	-	298 @40V	4.35 @5V	7.4	-	-	TO252 (DPAK)
DMN7022LFG	N	75	20	7.8	2	22	28	-	-	3	2737 @35V	26.4	56.5	Y	-	PowerDI3333-8
DMT8030LDF	N	80	20	7.5	2.2	25	38	-	-	2.5	641 @25V	5.4	10.4	-	-	U-DFN2020-6 (Type F)
DMT8012LFG	N	80	20	35*	30*	16	22 @6V	-	-	3	1949	15	34	-	-	PowerDI3333-8
DMT8008LFG	N	80	20	48*	23.5*	6.9	10.4	-	-	2.5	2254	18.3	37.7	-	-	PowerDI3333-8
DMTH8008SFG	N	80	20	68*	50*	7	10.5 @6V	-	-	4	1945	18.4 @5V	31.7	-	Y	PowerDI3333-8
DMTH8008LFG	N	80	20	70*	50*	6.9	10.4	-	-	2.5	2254	18.3	37.7	Y	Y	PowerDI3333-8
DMT8012LSS	N	80	20	9.7	2	16.5	20	-	-	3	1949	15	34	-	-	SO-8
DMT8008LSS	N	80	20	13	2.2	8	12	-	-	2.8	2840	24	47	-	-	SO-8
DMT8012LPS	N	80	20	65*	113*	17	21	-	-	3	1949	15	34	-	-	PowerDI5060-8
DMTH8012LPSW	N	80	20	53.7*	83.3*	17	23.5	-	-	3	1949	15	34	-	Y	PowerDI5060-8 (SWP) (Type Q)
DMTH8003SPS	N	80	20	100*	125*	3.9	-	-	-	4	8952	-	124.3	-	Y	PowerDI5060-8
DMTH8004LPS	N	80	20	100*	125*	3.8	5.3	-	-	2.8	4979	43	81	-	Y	PowerDI5060-8
DMTH84M1SPS	N	80	20	100*	136*	4	-	-	-	4	4209	41 @6V	63	Y	Y	PowerDI5060-8
DMTH8012LPS	N	80	20	72*	136*	17	21	-	-	3	1949	15	34	Y	Y	PowerDI5060-8
DMT8008LPS	N	80	20	83*	83*	7.8	11	-	-	2.8	2345	21.7	41.2	-	-	PowerDI5060-8
DMT8008SPS	N	80	20	83*	83*	7.8	11 @6V	-	-	4	1950	23 @6V	34	-	-	PowerDI5060-8
DMTH8008LPS	N	80	20	91*	100*	7.8	11	-	-	2.8	2345	21.7	41.2	Y	Y	PowerDI5060-8
DMTH8008SPS	N	80	20	92*	100*	7.8	11 @6V	-	-	4	1950	23 @6V	34	Y	Y	PowerDI5060-8
DMT8012LK3	N	80	20	44*	50*	17	22	-	-	3	1949	15	34	-	-	TO252 (DPAK)
DMTH8012LK3	N	80	20	50*	60*	16	21	-	-	3	1949	15	34	Y	Y	TO252 (DPAK)

* @TC = 25°C

51V – 99V P-CHANNEL



Part Number	ESD Diode	V _{DS}	V _{GS}	I _{DS} (A)	P _D (W)	R _{DS(ON)} (mΩ max) at V _{GS} =		V _{GS} (th) (V) Max.	C _{iss} typ (pF)	Q _C typ @ V _{GS} = 4.5V (nC)	Q _C typ @ V _{GS} = 10V (nC)	Automotive Version Avail.	175°C Rated	Package
		(V)	(±V)	@T _A =25°C	@T _A =25°C	10V	4.5V							
ZVP3306F	N	60	20	0.09	0.33	14000	-	3.5	50 @18V	-	-	-	-	SOT23
ZXMP6A13F	N	60	20	1.1	0.806	400	600	3	219	2.9	5.9	Y	-	SOT23
DMP6350S	N	60	20	1.5	1.17	350	550	3	206	2	4.1	Y	-	SOT23
DMPH6250S	N	60	20	2.4	1.62	155	240	3	512	4	8.3	Y	Y	SOT23
DMP6250SFDF	N	60	20	3.2	2	155	240	3	612 @20V	4.3	8.9	-	-	U-DFN2020-6 (Type F)
DMP610SFDF	N	60	20	3.5	1.97	110	130	3	969	8.2	17.2	Y	-	U-DFN2020-6 (Type F)
DMP610SVT	N	60	20	7.3	1.8	105	130	3	969	8.2	17.2	Y	-	TSOT26
ZXMP6A17E6	N	60	20	3	1.9	125	190	3	637	9.8 @-5V	17.7	Y	-	SOT26
DMP6050SFG	N	60	20	4.8	1.8	50	70	3	1293	11.9	24	-	-	PowerDI3333-8
DMP6023LFG	N	60	20	7.7	2.1	25	33	3	2569	26.5	53.1	Y	-	PowerDI3333-8
ZVP3306A	N	60	20	0.16	0.625	14000	-	3.5	50 @18V	-	-	-	-	E-Line
ZVP2106A	N	60	20	0.28	0.7	5000	-	3.5	100 @18V	-	-	-	-	E-Line
ZXMP6A17N8	N	60	20	3.4	2.5	125	190	-	637	9	17.7	-	-	SO-8
DMP6110SSS	N	60	20	4.5	2	110	130	3	1030	9.5	19.4	Y	-	SO-8
DMP6023LSS	N	60	20	6.6	1.6	25	33	3	2569	26.5	53.1	-	-	SO-8
ZVP2106G	N	60	20	0.45	2	5000	-	3.5	100 max @18V	-	-	-	-	SOT223
DMP6250SE	N	60	20	2.1	1.8	250	300	3	551	4.8	9.7	-	-	SOT223
ZXMP6A13G	N	60	20	2.3	3.9	390	595	3	219	2.9	5.9	-	-	SOT223
DMP6185SE	N	60	20	3	2.2	150	185	3	708	6.2	14	Y	-	SOT223
ZXMP6A17G	N	60	20	4.3	3.9	125	190	-	637	9	17.7	Y	-	SOT223
DMP6023LE	N	60	20	7	2	28	35	3	2569	26.5	53.1	Y	-	SOT223
DMP6050SPS	N	60	20	5.7	2.4	50	70	3	2163	14	30	-	-	PowerDI5060-8
ZXMP6A17K	N	60	20	6.6	4.17	125	190	-	637	9	17.7	-	-	TO252 (DPAK)
DMPH6050SK3	N	60	20	7.2	3.8	50	70	3	1377	12	25	Y	Y	TO252 (DPAK)
DMPH6023SK3	N	60	20	7.3	3.2	33	40	3	2569	26.5	53.1	Y	Y	TO252 (DPAK)
ZXMP6A16K	N	60	20	8.2	2.11	85	125	-	1021	12.1 @5V	24.2	-	-	TO252 (DPAK)
DMP6185SK3	N	60	20	9.4	2.8	150	185	3	708	6.2	14	-	-	TO252 (DPAK)
ZXMP6A18K	N	60	20	10.4	4.3	55	80	-	1580	23 @5V	44	-	-	TO252 (DPAK)
DMP6180SK3	N	60	20	14*	2.7	110	140	2.7	984.7	8.1	17.1	Y	-	TO252 (DPAK)
DMP610DL	N	60	30	0.18	0.5	10000 @5V	-	2	24.6	0.28	0.56	-	-	SOT23
ZXMP7A17G	N	70	20	3.7	3.9	160	250	-	635	9.6 @5V	18	Y	-	SOT223
ZXMP7A17K	N	70	20	5.7	4.17	160	250	-	635	9.6 @5V	18	Y	-	TO252 (DPAK)

* @TC =25°C

60V – 65V PLUS DUAL N-CANNEL



Part Number	ESD Diode	V _{DS} (V)	V _{GS} (±V)	I _{DS} (A) @T _A =25°C	P _D (W) @T _A =25°C	R _{DS(ON)} (mΩ max) at V _{GS} =				V _{GS} (th) (V) Max.	C _{iss} typ (pF)	Q _C typ @ V _{GS} = 4.5V (nC)	Q _C typ @ V _{GS} = 10V (nC)	Automotive Version Avail.	T _{75°C} Rated	Package
						10V	4.5V	2.5V	1.8V							
DMN61D8LVT	Y	60	12	0.63	1.09	-	-	2400 @3V	-	2	12.9 @12V	0.74 @5V	-	Y	-	TSOT26
DMT6015LPDW	Y	60	16	9.4	2.4	18	24.5	-	-	2.5	808	8.6	15.7	-	-	PowerDI5060-8 SWP (Type UXD)
DMNH6021SPDW	N	60	20	8.2	2.8	25	40	-	-	3	1143 @25V	-	20.1	Y	-	PowerDI5060-8
DMNH6042SPD	N	60	20	5.7	2.5	50	65	-	-	3	584 @25V	4.2	8.8	Y	-	PowerDI5060-8 (Type C)
DMNH6021SPD	N	60	20	8.2	2.8	25	40	-	-	3	1143 @25V	12 @6V	20.1	Y	-	PowerDI5060-8 (Type C)
DMTH6016LPD	N	60	20	9.2	2.5	19	28	-	-	2.5	864	8.4	17	Y	Y	PowerDI5060-8 (Type C)
DMTH6010LPD	N	60	20	13.1	2.8	11	16	-	-	3	2615	20.3	40.2	Y	Y	PowerDI5060-8 (Type C)
ZXMN6A11DN8	N	60	20	3.2	2.1	120	180	-	-	-	330 40V	3 @5V	5.7	-	-	SO-8
DMN6070SSD	N	60	20	3.3	1.5	80	100	-	-	3	588	5.6	12.3	-	-	SO-8
DMN6066SSD	N	60	20	4.4	2.1	66	97	-	-	3	502	5.4	10.3	-	-	SO-8
DMN6040SSD	N	60	20	5	1.7	40	55	-	-	3	1287 @25V	10.4	22.4	Y	-	SO-8
ZXMN6A25DN8	N	60	20	5	2.1	50	70	-	-	-	1063	11 @5V	20.4	-	-	SO-8
DMNH6042SSD	N	60	20	5.3	2.1	50	65	-	-	3	584 @25V	4.2	8.8	Y	-	SO-8
ZXMN6A09DN8	N	60	20	5.6	2.1	40	60	-	-	3	1407 @40V	12.4 @5V	24.2	-	-	SO-8
DMN6022SSD	N	60	20	6	1.5	29	34 @6V	-	-	3	2110	14	32	-	-	SO-8
DMNH6022SSD	N	60	20	7.1	2.1	27	30 @6V	-	-	3	2127 @25V	14	32	Y	-	SO-8
DMTH6016LSD	N	60	20	7.6	1.9	19.5	28	-	-	2.5	864	8.4	17	Y	Y	SO-8
DMN601DMK	Y	60	20	0.51	0.98	2400	4000 @4V	-	-	2.5	30 @25V	304	-	-	-	SOT26
DMN66D0LDW	Y	60	20	0.115	0.25	5000	6000 @5V	-	-	2	23 @25V	-	-	-	-	SOT363
DMN65D8LDW	Y	60	20	0.2	0.4	6000	8000	-	-	2	22 @25V	0.43	0.87	Y	-	SOT363
2N7002DW	N	60	20	0.23	0.4	13500	7500 @5V	-	-	2	22 @25V	-	-	-	-	SOT363
2N7002DWS	Y	60	20	0.247	0.37	4000	4100 @5V	-	-	2.5	41 @25V	0.4	-	-	-	SOT363
DMN63D1LDW	Y	60	20	0.25	0.39	2000	3000	-	-	2.5	30 @25V	0.304	-	-	-	SOT363
DMN601DVK	Y	60	20	0.305	0.2	2000	3000 @5V	-	-	2.5	50 max @25V	0.304	-	Y	-	SOT363
DMN61D9UDW	Y	60	20	0.35	0.41	-	2000 @5V	2500	3500	1	28.5	0.4	-	-	-	SOT363
DMN62D0UDW	Y	60	20	0.35	0.41	-	2000	2500	3000	1	32	0.5	-	Y	-	SOT363
2N7002VAC	N	60	20	0.28	0.15	13500	7500 @ 5V	-	-	2.5	50 max @25V	-	-	-	-	SOT563
2N7002VC	N	60	20	0.28	0.15	13500	7500 @ 5V	-	-	2.5	50 max @25V	-	-	-	-	SOT563
DMN601VK	Y	60	20	0.305	0.25	2000	3000	-	-	2.5	50 max @25V	-	-	Y	-	SOT563
DMG1026UV	Y	60	20	0.41	0.65	1800	2100	-	-	1.8	32 @25V	0.45	-	-	-	SOT563
DMN63D1LV	Y	60	20	0.55	0.94	2000	3000 @5V	-	-	2.5	30 @25V	0.392	-	-	-	SOT563
DMT6018LDR	N	60	20	8.8	1.9	17	26	-	-	3	869	6.2	13.9	-	-	V-DFN3030-8 (Type H)
DMN67D8LDW	N	60	30	0.23	0.41	5000	7500 @5V	-	-	2.5	22 @25V	0.361	0.821	-	-	SOT363
DMT6017LDV	Y	65	16	25.3*	2.34	22	29	-	-	2.3	891 @30V	7.5	15.3	-	-	PowerDI3333-8

* @TC =25°C

100V PLUS N-CHANNEL



Part Number	ESD Diode	V _{DS} (V)	V _{GS} (±V)	I _{DS} (A) @T _A =25°C	P _D (W) @T _A =25°C	R _{DS(ON)} (mΩ max) at V _{GS} =			V _{GS} (th) (V) Max.	C _{iss} typ (pF)	Q _C typ @ V _{GS} = 4.5V (nC)	Q _C typ @ V _{GS} = 10V (nC)	Automotive Version Avail.	175°C Rated	Package
						10V	4.5V	2.5V							
DMN10H220L	N	100	16	1.6	1.3	220	250	-	2.5	401 @25V	4.1	8.3	Y	-	SOT23
DMN10H220LVT	N	100	16	2.24	1.67	220	250	-	2.5	401 @25V	4.1	8.3	-	-	TSOT26
BSS123W	N	100	20	0.17	0.2	6000	10000	-	2	29 @25V	-	-	Y	-	SOT323
ZVN3310F	N	100	20	0.1	0.33	10000	-	-	2.4	40 max @25V	-	-	-	-	SOT23
BSS123	N	100	20	0.17	0.3	6000	10000	-	2	22 @25V	-	-	-	-	SOT23
BSS123(Z)	N	100	20	0.17	0.36	6000	-	-	2.8	20 max @25V	-	-	-	-	SOT23
DMN10H700S	N	100	20	0.7	0.5	700	-	-	4	235	-	4.6	-	-	SOT23
ZXMN10A07F	N	100	20	0.8	0.806	700	900 @6V	-	4	138	-	2.9	-	-	SOT23
DMN10H220LDFD	N	100	20	2.2	1.6	225	290	-	2.5	384 @25V	3.7	6.7	-	-	U-DFN2020-6 (Type F)
DMN10H170SFDE	N	100	20	2.9	2.03	160	200	-	3	1167 @25V	4.9	9.7	-	-	U-DFN2020-6 (Type E)
DMT10H072LDFD	N	100	20	4	1.8	62	110	-	3	228	2.5	4.5	Y	-	U-DFN2020-6 (Type F)
DMT10H052LDFD	N	100	20	5	1.9	52	75	-	3	258	2.9	5.4	-	-	U-DFN2020-6 (Type F)
DMT10H032LDFD	N	100	20	6	1.6	32	46	-	2.5	683	6.3	11.9	-	-	U-DFN2020-6 (Type F)
DMN10H170SVT	N	100	20	2.6	1.7	160	200	-	3	1167 @25V	4.9	9.7	Y	-	TSOT26
ZXMN10B08E6	N	100	20	1.9	1.7	230	300	-	3	497	5 @5V	9.2	-	-	SOT26
ZXMN10A08E6	N	100	20	1.9	1.7	250	300 @6V	-	4	405	4.2 @5V	7.7	-	-	SOT26
DMN10H170SFC	N	100	20	2.9	2	122	133	-	3	870.7 @25V	7	14.9	Y	-	PowerDI3333-8
DMN10H120SFC	N	100	20	3.8	2.4	110	122 @6V	-	3	549	5.2	10.6	-	-	PowerDI3333-8
DMN10H099SFC	N	100	20	4.2	2.31	80	99 @6V	-	3	1127	12.2	25.2	-	-	PowerDI3333-8
DMT10H072LFV	N	100	20	20*	2	62	109	-	2.8	228	2.5	4.5	-	-	PowerDI3333-8
DMT10H015LCC	N	100	20	34*	2.1	15	26	-	3.5	1871	-	33.3	-	-	V-DFN3333-8
DMT10H015LFC	N	100	20	42*	2	13.5	23.5	-	3.5	1871	-	33.3	-	-	PowerDI3333-8
DMT10H009LCC	N	100	20	47*	2.1	8.8	12.9	-	2.5	2309	20.2	-	-	-	V-DFN3333-8
DMT10H009LFC	N	100	20	50*	2	8.5	12.5	-	2.5	2361	-	41	-	-	PowerDI3333-8
DMN10H220LDV	N	100	20	10.5*	40*	222	270	-	2.5	366	3.7	6.7	-	-	PowerDI3333-8 (Type UXC)
DMN10H220LFVW	N	100	20	11*	41*	222	270	-	2.5	366	3.7	6.7	-	-	PowerDI3333-8 (SWP) (Type UX)
DMT10H032LFVW	N	100	20	17*	2.5	32	50	-	2.5	683	6.3	11.9	-	-	PowerDI3333-8
DMT10H009SCC	N	100	20	48*	2.7	9.5	-	-	4	2085	-	30	-	-	V-DFN3333-8 (Type B)
ZXMN10A07Z	N	100	20	1.4	2.6	700	900 @6V	-	4	138	-	2.9	-	-	SOT89
ZVN3310A	N	100	20	0.2	0.625	10000	-	-	2.4	40 max @25V	-	-	-	-	E-Line
ZVNL110A	N	100	20	0.32	0.7	3000	4500 @5V	-	1.5	75 max @25V	-	-	-	-	E-Line
ZVN2110A	N	100	20	0.32	0.7	4000	-	-	2.4	75 max @25V	-	-	-	-	E-Line
ZVN4210A	N	100	20	0.45	0.7	1500	1800 @5V	-	2.4	100 max @25V	-	-	-	-	E-Line
ZVN4310A	N	100	20	0.9	0.85	500	650 @6V	-	3	350 max @25V	-	-	-	-	E-Line
DMT10H025LSS	N	100	20	7.1	1.9	25	45	-	3	1639	-	22.9	-	-	SO-8
DMT10H025SSS	N	100	20	7.4	1.9	23	30 @6V	-	4	1544	13.4 @ 6V	21.4	-	-	SO-8
DMT10H015LSS	N	100	20	8.3	1.67	16	25	-	3	1871	-	33.3	-	-	SO-8
DMT10H014LSS	N	100	20	8.9	1.67	15	25	-	3	1871	-	33.3	-	-	SO-8
DMT10H010LSS	N	100	20	11.5	1.9	9.5	14.5	-	2.8	4166	-	58.4	-	-	SO-8
DMT10H009SSS	N	100	20	12	2.1	9.2	-	-	4	2085	-	29.8	-	-	SO-8
DMT10H009LSS	N	100	20	13	2.5	9	13.8	-	3	2309	20.2	40.2	-	-	SO-8
ZVN2110G	N	100	20	0.5	2	4000	-	-	2.4	59 @25V	-	-	-	-	SOT223
ZVNL110G	N	100	20	0.6	2	3000	4500 @5V	-	1.5	47 @25V	-	-	-	-	SOT223
ZVN4210G	N	100	20	0.8	2	1500	1800 @5V	-	2.4	100 max @25V	-	-	-	-	SOT223
ZVN4310G	N	100	20	1.67	3	540	750 @5V	-	3	350 max @25V	-	-	-	-	SOT223
DMN10H220LE	N	100	20	2.3	1.8	220	250	-	2.5	401 @25V	4.1	8.3	-	-	SOT223
ZXMN10A11G	N	100	20	2.4	3.9	350	450 @6V	-	4	274	3.5 @6V	5.4	-	-	SOT223
ZXMN10A08G	N	100	20	2.9	3.9	250	300 @6V	-	-	405	4.2 @5V	7.7	-	-	SOT223
DMN10H120SE	N	100	20	3.6	2.1	110	122	-	3	549	5.2	10	-	-	SOT223

* @TC =25°C

100V PLUS N-CHANNEL (CONTINUED)



Part Number	ESD Diode	V _{DS} (V)	V _{GS} (±V)	I _{DS} (A) @T _A =25°C	P _D (W) @T _A =25°C	R _{DS(ON)} (mΩ max) at V _{GS} =			V _{GS(th)} (V) Max.	C _{ISS} typ (pF)	Q _C typ @ V _{GS} = 4.5V (nC)	Q _C typ @ V _{GS} = 10V (nC)	Automotive Version Avail.	175°C Rated	Package
						10V	4.5V	2.5V							
ZXMN10A25G	N	100	20	4	3.9	125	150 @6V	-	4	859	9.6 @5V	17	-	-	SOT223
DMTH10H015LPS	N	100	20	44*	1.3	16	25	-	3	1871	-	33.3	-	Y	PowerDI5060-8
DMTH10H015LPS	N	100	20	44*	1.3	16	25	-	3	1871	-	33.3	-	-	PowerDI5060-8
DMTH10H015SPS	N	100	20	50.5*	55*	14.5	19.5 @6V	-	4	2343	-	30.1	Y	Y	PowerDI5060-8
DMTH10H010LPS	N	100	20	98*	139*	8.3	20	-	3	4166	-	58.4	-	-	PowerDI5060-8
DMTH10H009LPS	N	100	20	90*	104*	8	12.5	-	2.5	2309	20.2	40.2	-	-	PowerDI5060-8
DMTH10H010SPS	N	100	20	113*	139*	8.8	11.5 @6V	-	4	4468	-	56.4	-	-	PowerDI5060-8
DMTH10H010SPS	N	100	20	123*	166*	8.8	11.5 @6V	-	4	4468	-	56.4	Y	Y	PowerDI5060-8
DMTH10H009LPS	N	100	20	100*	125*	8	12.5	-	2.5	2309	20.2	40.2	Y	Y	PowerDI5060-8
DMTH10H009SPS	N	100	20	80*	83*	8.5	-	-	4	2085	-	30	-	-	PowerDI5060-8
DMTH10H009SPS	N	100	20	88*	100*	8.9	-	-	4	2085	-	30	Y	Y	PowerDI5060-8
DMTH10H4M5LPS	N	100	20	100*	136*	4.3	6.2	-	2.5	4843	-	80	-	Y	PowerDI5060-8
DMTH10H4M5LPS	N	100	20	100*	113*	4.3	6.2	-	2.5	4843	-	80	-	-	PowerDI5060-8
DMNH10H028SPS	N	100	20	40*	2.9	28	-	-	4	2245	22 @6V	36	Y	Y	PowerDI5060-8
DMTH10H025LPS	N	100	20	45*	3.2	23	30 @6V	-	3	1477	-	21	Y	Y	PowerDI5060-8
DMTH10H015SPS	N	100	20	46*	1.3	14.5	19.5 @6V	-	4	2343	-	30.1	-	-	PDI5060
DMTH10H010LPS	N	100	20	98.4*	125*	8.6	20	-	3	2592	-	53.7	-	Y	PowerDI5060-8
DMTH10H4M6SPS	N	100	20	100*	136*	4.6	-	-	4	4327	-	66	-	Y	PDI5060
ZXMN10A11K	N	100	20	3.5	2.11	350	450 @6V	-	4	274	3.5 @6V	5.4	-	-	TO252 (DPAK)
DMNH10H100SK3	N	100	20	18*	37*	80	100	-	3	1172	12.2	25.2	-	-	TO252 (DPAK)
ZXMN10A25K	N	100	20	6.4	2.11	125	150 @6V	-	4	859	9.6 @5V	17.16	-	-	TO252 (DPAK)
ZXMN10A09K	N	100	20	7.7	2.15	85	100 @6V	-	4	1313	17.2 @6V	26	-	-	TO252 (DPAK)
DMNH10H170SK3	N	100	20	12*	42*	140	160	-	3	1167 @25V	4.9	9.7	Y	-	TO252 (DPAK)
DMNH10H099SK3	N	100	20	17*	34*	80	99 @6V	-	3	1172	12.2	25.2	-	-	TO252 (DPAK)
DMTH10H030LK3	N	100	20	28*	3.5	30	45 @6V	-	3.5	1871	-	33.3	-	Y	TO252 (DPAK)
DMTH10H025SK3	N	100	20	41.2*	2.5	23	30 @6V	-	4	1544	21.4	-	-	-	TO252
DMTH10H025SK3	N	100	20	46.3*	3.7	23	30 @6V	-	4	1544	13.4 @6V	21.4	-	Y	TO252 (DPAK)
DMTH10H025LK3	N	100	20	47.2*	2.6	22	43.7	-	3	1477	-	21	-	-	TO252 (DPAK)
DMTH10H025LK3	N	100	20	51.7*	3.1	22	43.7	-	3	1477	-	21	Y	Y	TO252 (DPAK)
DMTH10H015LK3	N	100	20	52.5*	3.5	15	25	-	3.5	1871	-	33.3	-	Y	TO252 (DPAK)
DMTH10H015LK3	N	100	20	52.7*	2.9	15	25	-	3.5	1871	-	33.3	-	-	TO252 (DPAK)
DMTH10H015SK3	N	100	20	54*	2.9	14	-	14	4	2343	-	30.1	-	-	TO252 (DPAK)
DMNH10H028SK3	N	100	20	55*	3.7	28	-	-	3.3	2245	-	36	Y	Y	TO252 (DPAK)
DMTH10H010LK3	N	100	20	68.8*	3	8.8	15	-	2.8	2592	-	53.7	-	-	TO252 (DPAK)
DMNH10H220LK3	N	100	20	7.5*	18.7*	220	250	-	2.5	384 @25V	3.7	6.7	-	-	TO252
DMTH10H009LH3	N	100	20	84*	96*	9	13	-	2.5	2309	20.2	-	-	-	TO251
DMTH10H009LK3	N	100	20	90*	3	9	13	-	2.5	2309	20	-	-	-	TO252 (DPAK)
DMTH10H009SK3	N	100	20	91*	3.2	9.1	-	-	4	2028	-	34	-	-	TO252 (DPAK)
DMTH10H010LCTB	N	100	20	100*	3.9	9.5	17	-	3.5	2592	-	53.7	-	Y	TO263AB (D2PAK)
DMTH10H2M5STLW	N	100	20	248*	230.8*	2.5	-	-	4	8450	-	124.4	Y	Y	PowerDI1012-8
DMTH10H010SCT	N	100	20	100*	2.5	9.5	-	-	4	4468	-	56.4	-	Y	TO220AB
DMTH10H010LCT	N	100	20	108*	2.4	9.5	-	-	3.5	4166	-	58.4	-	Y	TO220-3
DMTH10H005LCT	N	100	20	140*	2.9	5	-	-	3.5	3688	-	114	-	Y	TO220AB
DMTH10H005SCT	N	100	20	140*	2.9	5	-	-	4	8474	-	111.7	-	Y	TO220AB
DMNH10H028SCT	N	100	20	60*	2.8	28	-	-	4	1942	-	31.9	-	Y	TO220AB
DMTH10H010LCT	N	100	20	98*	2	9.5	20	-	3	4166	-	58.4	-	-	TO220AB
DMT12H090LDF4	N	115	12	3.4	1.6	90	100	-	2.2	251	-	6	-	-	X2-DFN2020-6
DMT12H065LDF	N	115	12	4.3	1.8	65	70	-	2.2	252	-	5.5	-	-	U-DFN2020-6 (Type F)
DMT12H007LPS	N	120	20	90*	2.9	7.8	14.1	-	2.5	3224	-	49	-	-	PowerDI5060-8

* @TC =25°C

100V PLUS N-CHANNEL (CONTINUED)



Part Number	ESD Diode	V _{DS} (V)	V _{GS} (±V)	I _{DS} (A) @T _A =25°C	P _D (W) @T _A =25°C	R _{DS(ON)} (mΩ max) at V _{GS} =			V _{GS} (th) (V) Max.	C _{ISS} typ (pF)	Q _C typ @ V _{GS} = 4.5V (nC)	Q _C typ @ V _{GS} = 10V (nC)	Automotive Version Avail.	175°C Rated	Package
						10V	4.5V	2.5V							
DMN13H750S	N	130	20	1	1.26	750	850	-	4	231@25V	-	5.6	-	-	SOT23
DMT15H0675SS	N	150	20	4.5	2	67	-	-	4	425	-	6.4	-	-	SO-8
DMT15H053SS	N	150	20	5.2	2	53	-	-	4	814	-	11.5	-	-	SO-8
DMN15H310SE	N	150	20	2	1.9	310	330 @5V	-	3	405 @25V	4.6 @5V	8.7	-	-	SOT223
DMNH15H110SPS	N	150	20	27*	1.5	90	-	-	4	989	-	25.5	-	Y	PowerDI5060-8
DMTH15H017SPS	N	150	20	61*	107*	19	22 @8V	-	4	2344	-	34	-	Y	PowerDI5060-8 (SWP) (Type UX)
DMT15H017LPS	N	150	20	9.4	2.3	17.5	25.5	-	2.6	3369	-	50	-	-	PowerDI5060-8
DMN15H310SK3	N	150	20	8.3*	32*	310	-	-	3	405 @25V	4.6 @5V	8.7	-	-	TO252 (DPAK)
ZXMN15A27K	N	150	25	2.55	2.2	650	-	-	4	169 @25V	-	6.6	-	-	TO252 (DPAK)
ZVN3320F	N	200	20	0.06	0.33	25000	-	-	3	45 max @25V	-	-	-	-	SOT23
BS107P	N	200	20	0.12	0.5	-	30000 @5V	23000 @2.6V	3	85 max @25V	-	2.7	-	-	E-Line
ZVNL120A	N	200	20	0.18	0.7	-	10000 @5V	10000 @3V	1.5	85 max @25V	-	-	-	-	E-Line
ZVN2120G	N	200	20	0.32	2	10000	-	-	3	85 max @25V	-	-	-	-	SOT223
ZVNL120C	N	200	20	0.32	2	-	10000 @5V	10000 @3V	1.5	85 max @25V	-	-	-	-	SOT223
ZXMN20B28K	N	200	20	2.3	2.2	750	780 @5V	-	2.5	358 @25V	8.1 @5V	-	-	-	TO252 (DPAK)
DMN24H11DS	N	240	20	0.27	1.2	11000	12000	-	3	76.8 @25V	-	3.7	Y	-	SOT23
DMN24H3DSL	N	240	20	0.48	1.26	3500	3500	6000 @3V	2.5	188 @25V	-	6.6	-	-	SOT23
ZVNO124A	N	240	20	0.16	0.7	16000	-	-	3	85 max @25V	-	-	-	-	E-Line
ZVN4424A	N	240	40	0.26	0.75	5500	-	6000	1.8	110 @25V	-	-	-	-	E-Line
ZVN4424C	N	240	40	0.5	2.5	5500	-	6000	1.8	110 @25V	-	-	-	-	SOT223
ZVN4525E6	N	250	40	0.23	1.1	8500	9000	9500 @2.4V	1.8	72 @25V	-	2.6	-	-	SOT26
ZVN4525Z	N	250	40	0.24	1.2	8500	9000	9500 @2.4V	1.8	72 @25V	-	2.6	-	-	SOT89
ZVN4525C	N	250	40	0.31	2	8500	9000	9500	1.8	72 @25V	-	2.6	-	-	SOT223
DMN30H4D0L	N	300	20	0.25	0.47	4000	4000	-	3	187.3 @25V	-	7.6	-	-	SOT23
DMN30H4DIS	N	300	20	0.43	0.43	4000	5000	-	3	174 @25V	-	4.8	-	-	SOT23
DMN30H4D0LFDE	N	300	20	0.55	1.98	4000	4000	-	2.8	187.3 @25V	-	7.6	-	-	U-DFN2020-6 (Type E)
DMN30H14DLY	N	300	20	0.21	2.2	14000	20000	-	3	96 @25V	-	4	-	-	SOT89
ZVN0545A	N	450	20	0.09	0.7	50000	-	-	3	70 max @25V	-	-	-	-	E-Line
ZVN0545C	N	450	20	0.14	2	50000	-	-	3	70 max @25V	-	-	-	-	SOT223
ZXMN0545G4	N	450	20	0.14	2	50000	-	-	3	70 max @25V	-	-	-	-	SOT223
BSS127S	N	600	20	0.07	1.25	160000	19000 @5V	-	4.5	21.8 @25V	-	1.08	-	-	SOT23
DMN60H080DS	Y	600	20	0.08	1.1	100000	290000	-	3	25 @25V	-	1.7	-	-	SOT23
BSS127SSN	N	600	20	0.07	1.25	160000	19000 @5V	-	4.5	21.8 @25V	-	1.08	-	-	SC59
DMN60H4D5SK3	N	600	30	2.5*	41*	4500	-	-	4	273.5 @25V	-	8.2	-	-	TO252 (DPAK) (Type TH)
DMG3N60S3J	N	600	30	2.8*	2.5	3500	-	-	4	354 @25V	-	12.6	-	-	TO251 (Type TH)
DMN60H3D5SK3	N	600	30	2.8*	41*	3500	-	-	4	354 @25V	-	12.6	-	-	TO252 (DPAK) (Type TH)
DMG10N60SCT	N	600	30	12*	2.5	750	-	-	4	1587 @25V	-	35	-	-	TO220AB (Type TH)
DMG3N60SCT	N	600	30	3.3*	104*	3500	-	-	4	354 @25V	-	12.6	-	-	TO220AB (Type TH)
DMG7N65S3J	N	650	30	5.5*	125*	1400	-	-	4	886	-	25	-	-	TO251 (Type TH)
DMG7N65SCT	N	650	30	7.7*	125*	1400	-	-	4	886	-	25.2	-	-	TO220AB (Type TH)
DMG8N65SCT	N	650	30	8*	125*	1300	-	-	4	1217 @25V	-	30	-	-	TO220AB (Type TH)
DMJ65H650SCTI	N	650	30	10*	31*	600	-	-	4	639 @100V	-	12.9	-	-	ITO220AB (Type TH)
DMG7N65SCTI	N	650	30	7.7*	28*	1400	-	-	4	886	-	25.2	-	-	ITO220AB (Type TH)
DMJ70H600SH3	N	700	30	11*	113*	600	-	-	4	643 @25V	-	18.2	-	-	TO251 (Type TH3)
DMJ70H1D3S3J	N	700	30	4.6*	41*	1300	-	-	4	351	-	13.9	-	-	TO251
DMJ70H1D4S3J	N	700	30	6.1*	78*	1400	-	-	5	273 @100V	-	9	-	-	TO251 (Type TH)
DMJ7N70SK3	N	700	30	3.9*	28*	1250	-	-	4	351 @50V	-	13.9	-	-	TO252 (DPAK)
DMN80H2D0SCTI	N	800	30	7*	41*	2000	-	-	4	1253 @25V	-	35.4	-	-	ITO220AB (Type TH)

* @TC =25°C

100V PLUS P-CHANNEL



Part Number	ESD Diode	V _{DS}	V _{GS}	I _{DS} (A)		P _D (W)	R _{DS(ON)} (mΩ max) at V _{GS} =			V _{GS} (th) (V)	C _{ISS} typ (pF)	Q _C typ @ V _{GS} = 4.5V (nC)	Q _C typ @ V _{GS} = 10V (nC)	Automotive Version Avail.	Package
		(V)	(±V)	@T _A =25°C	@T _A =25°C		10V	4.5V	2.5V						
ZVP3310F	N	100	20	0.075	0.33	20000	-	-	3.5	50 max @25V	-	-	-	-	SOT23
DMP10H4D2S	Y	100	20	0.27	0.44	4200	-	-	3	87 @25V	-	1.8	-	-	SOT23
ZXMP10A13F	N	100	20	0.7	0.806	1000	1450 @-6V	-	4	141	1.8 @-5V	3.5	Y	-	SOT23
ZXMP10A17E6	N	100	20	1.6	1.7	350	450 @-6V	-	4	424	7.1 @-6V	10.7	Y	-	SOT26
ZVP3310A	N	100	20	0.14	0.625	20000	-	-	3.5	50 max @5V	-	-	-	-	E-Line
ZVP2110A	N	100	20	0.23	0.7	8000	-	-	3.5	100 max @25V	-	-	-	-	E-Line
ZVP2110G	N	100	20	0.31	2	8000	-	-	3.5	100 max @25V	-	-	-	-	SOT223
DMP10H400SE	N	100	20	2.3	2	250	300	-	3	1239 max @25V	8.4	17.5	Y	-	SOT223
ZXMP10A17G	N	100	20	2.4	3.9	350	450 @-6V	-	4	424	7.1 @-6V	10.7	Y	-	SOT223
ZXMP10A18G	N	100	20	3.7	3.9	150	190 @-6V	-	4	1055	-	26.9	-	-	SOT223
ZXMP10A17K	N	100	20	3.9	4	350	450 @-6V	-	4	424	7.1 @-6V	10.7	-	-	TO252 (DPAK)
ZXMP10A16K	N	100	20	4.6	4.24	235	285 @-6V	-	4	717	-	16.5	-	-	TO252 (DPAK)
ZXMP10A18K	N	100	20	5.9	4.3	150	190 @ 6V	-	4	1055	-	26.9	-	-	TO252 (DPAK)
DMP10H400SK3	N	100	20	9*	42*	240	300	-	3	1239 @25V	8.4	17.5	-	-	TO252 (DPAK)
ZVP1320F	N	200	20	0.035	0.35	80000	-	-	3.5	50 max @25V	-	-	-	-	SOT23
ZXMP2120FF	N	200	20	0.137	1	28000	-	-	3.5	100 max @25V	-	-	-	-	SOT23F
ZVP2120A	N	200	20	0.12	0.7	25000	-	-	3.5	100 max @25V	-	-	-	-	E-Line
ZVP2120G	N	200	20	0.2	2	25000	-	-	3.5	100 max @25V	-	-	-	-	SOT223
ZXMP2120G4	N	200	20	0.2	2	25000	-	-	3.5	100 max @25V	-	-	-	-	SOT223
ZVP4424Z	N	240	40	0.2	2.6	9000	-	11000 @3.5V	2	100 max @25V	-	-	-	-	SOT89
ZVP4424A	N	240	40	0.2	0.75	9000	-	11000 @3.5V	2	100 max @25V	-	-	-	-	E-Line
ZVP4424G	N	240	40	0.48	2.5	9000	-	11000 @3.5V	2	100 max @25V	-	-	-	-	SOT223
DMP25H18DLFDE	N	250	40	0.26	1.4	14000	-	18000@3.5V	2.5	81 @25V	-	2.8	-	-	U-DFN2020-6 (Type E)
ZVP4525E6	N	250	40	0.197	1.1	14000	-	18000 @3.5V	2	73 @25V	-	2.45	-	-	SOT26
ZVP4525Z	N	250	40	0.205	1.2	14000	-	18000 @3.5V	2	73 @25V	-	2.45	-	-	SOT89
ZVP4525G	N	250	40	0.265	2	14000	-	18000 @3.5V	2	73 @25V	-	2.45	-	-	SOT223
ZVP0545A	N	450	20	0.045	0.7	150000	-	-	4.5	120 max @ 5V	-	-	-	-	E-Line
ZVP0545G	N	450	20	0.075	2	150000	-	-	4.5	120 max @25V	-	-	-	-	SOT223
DMP45H150DHE	N	450	30	0.25*	13.9*	150000	-	-	4	59.2 @25V	-	1.8	-	-	SOT223
DMP45H21DHE	N	450	30	0.6*	12.5*	21000	-	-	5	1,003	-	4.2	-	-	SOT223
DMP45H4D9HJ3	N	450	30	4.6*	104*	4900	-	-	5	547 @25V	-	13.7	-	-	TO251 (Type TH)
DMP45H4D9HK3	N	450	30	4.7*	104*	4900	-	-	5	564 @25V	-	13.7	-	-	TO252 (DPAK)

* @TC = 25°C

100V PLUS DUAL N-CHANNEL



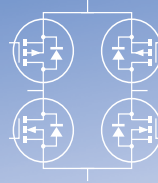
Part Number	ESD Diode	V _{DS}	V _{GS}	I _{DS} (A)		P _D (W)	R _{DS(ON)} (mΩ max) at V _{GS} =		V _{GS} (th) (V) Min.	V _{GS} (th) (V) Max.	C _{ISS} typ (pF)	Q _C typ @ V _{GS} = 4.5V (nC)	Q _C typ @ V _{GS} = 10V (nC)	Automotive Version Avail.	175°C Rated	Package
		(V)	(±V)	@T _A =25°C	@T _C =25°C		10V	4.5V								
DMT10H032LDV	N	100	20	-	18	2.4	36	50	1.3	2.5	683	6.3	11.9	-	-	PowerDI3333-8
ZXMN10A08DN8	N	100	20	2.1	-	1.8	250	300 @6V	-	-	405	4.2 @5V	7.7	-	-	SO-8
DMT10H017LPD	N	100	20	-	54.7	2.2	17.4	30.3	1	3	1986	14.4	28.6	-	-	PowerDI5060-8 (Type E)
DMN10H220LPDW	N	100	20	8	-	2.2	222	270	1	2.5	384 @25V	3.7	6.7	-	-	PowerDI5060-8
DMTH10H017LPD	N	100	20	-	59	2.6	17.4	30.3	1	3	1986	14.4	28.6	Y	Y	PowerDI5060-8
DMGD7N45SSD	N	450	30	0.5	-	1.64	4000	-	3.5	4.5	256 @25V	-	6.9	-	-	SO-8

100V COMPLEMENTARY



Part Number	ESD Diode	V _{DS}	V _{GS}	I _{DS} (A)	P _D (W)	R _{DS(ON)} (mΩ max) at V _{GS} =		V _{GS} (th) (V)	C _{ISS} typ (pF)	Q _C typ @ V _{GS} = 10V (nC)	Package
		(V)	(±V)	@T _A =25°C	@T _A =25°C	10V	4.5V	Max.			
ZXMC10A816N8	N	100, 100	20, 20	2.1, 2.2	2.1	230	300	2.4, 3	497, 717	9.2, 16.5	SO-8

30V – 100V H-BRIDGE



Part Number	Type	ESD Diode	V _{DS}	V _{GS}	I _{DS} (A)	P _D (W)	R _{DS(ON)} (mΩ max) at V _{GS} =		V _{GS} (th) (V)	C _{ISS} typ (pF)	Q _C typ @ V _{GS} = 4.5V (nC)	Q _C typ @ V _{GS} = 10V (nC)	Package
			(V)	(±V)	@T _A =25°C	@T _A =25°C	10V	4.5V	Max.				
ZXMHC3F381N8	2N + 2P	N	30	20, 20	5, 4.1	1.35	33, 55	60, 80	-	430, 670	-	9 @15V, 12.7 @15V	SO-8
ZXMHC3A01N8	2N + 2P	N	30	20, 20	2.7, 2.1	1.36	125, 210	180, 330	-	190 @25V, 204 @15V	-	3.9, 5.2	SO-8
DMHC3025LSD	2N + 2P	N	30	20	6, 4.2	1.5	25, 50	40, 80	-	590, 631	-	11.7, 11.4	SO-8
DMHT3006LFJ	4N	N	30	20	13	2.1	10	15	3	1171	9	17	V-DFN5045-12 (Type C)
ZXMHC3A01T8	2N + 2P	N	30	20, 20	3.1, 2.3	1.7	120, 210	180, 330	-	190 @25V, 204 @5V	-	3.9, 5.2	SM-8
DMHC4035LSD	2N + 2P	N	40	20	4.5, 3.7	1.5	45, 65	58, 100	-	574, 587	-	12.5, 11.1	SO-8
ZXMHC6A07N8	2N + 2P	N	60	20, 20	1.8, 1.4	1.36	250, 400	350, 600	-	166 @40V, 141 @50V	-	3.2, 5.1	SO-8
DMHC6070LSD	2N + 2P	N	60	20	3.1, 2.4	1.6	100, 170	120, 250	-	731, 618	-	11.5, 8.9	SO-8
DMHT6016LFJ	4N	N	60	20	10.6	2.7	22	30	3	864	8.4	17	V-DFN5045-12 (Type B)
ZXMHC6A07T8	2N + 2P	N	60	20, 20	1.8, 1.5	1.7	300, 425	450, 630	-	166 @40V, 233 @30V	1.65 @5V, 2.4 @5V	3.2, 5.1	SM-8
ZXMHN6A07T8	4N	N	60	20	1.6	1.4	300	450	-	166 @40V	-	3.2	SM-8
ZXMHC10A07N8	2N + 2P	N	100	20, 20	1, 0.85	1.36	700, 1000	900 (@6V), 1450 (@6V)	-	138 @60V, 141 @50V	-	2.9, 3.5	SO-8
DMHC10H170SFJ	2N + 2P	N	100	20	2.9, -2.3	2.1	160, 250	200, 300	-	1167, 1239 @25V	-	9.7, 17.5	V-DFN5045-12
DMHT10H032LFJ	4N	N	100	20	6	1.9	33	50	2.5	683	6.3	11.9	V-DFN5045-12 (Type C)
ZXMHC10A07T8	2N + 2P	N	100	20, 20	1.1, 0.9	1.3	700, 1000	900 (@6V), 1450 (@6V)	-	138 @60V, 141 @50V	-	2.9, 3.5	SM-8

MOSFET H-BRIDGES REDUCE FOOTPRINT BY 50%

Packaging dual N-channel and dual P-channel MOSFETs in DFN5045 and SO-8 packages, Diodes Incorporated has provided a unique solution that enables designers to reduce the PCB space and component count required by low power, full H-bridge applications.

In just a single footprint, these H-bridges can replace the equivalent of four single or two dual parts in space limited single-phase brushed and brushless motor driving, inductive wireless charging circuits, and DC-DC Converters.

The H-bridges' space-saving advantage is complemented by the low $R_{DS(ON)}$ performance of the MOSFETs.

The minimal conduction losses resulting from the low on-resistance mean the H-bridge tolerates higher continuous current under motor stall conditions.



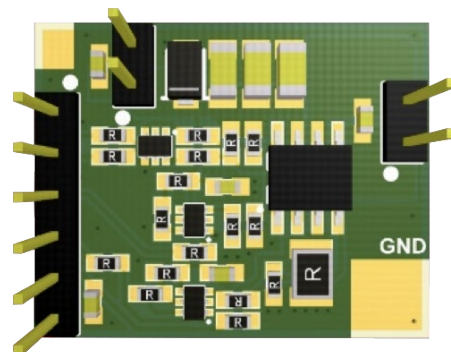
THE DIODES ADVANTAGE

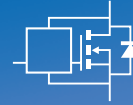
- **Reduce footprint**
In DFN5045 (5mm x 4.5mm) and SO-8 (5mm x 6mm) packages, these H-bridges can save PCB space, reduce component count and assembly costs
- **Low $R_{DS(ON)}$**
Minimizes conduction losses enables these H-bridges to tolerate high continuous current under motor stall conditions.
- **High pulsed current capability**
Allows for a high in-rush current to be drawn safely during the start-up of inductive loads

H-BRIDGE EVALUATION BOARD

This board includes driver transistors to allow H-Bridge (DMHC4035LSD) to be driven from 3.3V Micro.

For more details and quotations please contact your nearest Diodes sales office or representative.





60V IntelliFET N-CHANNEL

Part Number	V _{DS} (V)	I _D V _{IN} = 5V (A)	P _D (W)	R _{DS(ON)} (mΩ max) at V _{IN} =			V _{DS} (SC prot.) V _{IN} = 5V (V)	E _{AS} (mJ)	Auto Version Available	Package
				10V	5V	3V				
BSP75G	60	1.4	2.5	550	675	-	36	550	Y	SOT223
BSP75N	60	1.1	1.5	550	675	-	36	550	Y	SOT223
ZXMS6001N3	60	1.1	1.5	-	675	2000	36	550	Y	SOT223
ZXMS6002G	60	1.4	2.5	500	675	-	36	550	-	SOT223
ZXMS6003G	60	1.4	2.5	500	675	-	36	550	-	SOT223
ZXMS6004DC	60	1.3	3	-	500	600	36	490	Y	SOT223
ZXMS6004FF	60	1.3	1.5	-	500	600	36	90	Y	SOT23F
ZXMS6004N8	60	1.3	1.65	-	500	600	36	120	Y	SO-8
ZXMS6004SG	60	1.3	1.6	-	500	600	36	480	Y	SOT223
ZXMS6005DC	60	2	3	-	200	250	24	490	Y	SOT223
ZXMS6005N8	60	2	1.65	-	200	250	24	120	Y	SO-8
ZXMS6005SG	60	2	1.6	-	200	250	24	480	Y	SOT223
ZXMS6006DC	60	2.8	3	-	100	125	16	490	Y	SOT223
ZXMS6006SG	60	2.8	1.6	-	100	125	16	480	Y	SOT223

60V IntelliFET DUAL N-CHANNEL

Part Number	V _{DS} (V)	I _D V _{IN} = 5V (A)	P _D (W)	R _{DS(ON)} (mΩ max) at V _{IN} =			V _{DS} (SC prot.) V _{IN} = 5V (V)	E _{AS} (mJ)	Auto Version Available	Package
				10V	5V	3V				
ZXMS6004DN8	60	1.2	1.56	-	500	600	36	120	Y	SO-8
ZXMS6004DT8	60	1.2	2.13	-	500	600	36	210	Y	SM-8
ZXMS6005DN8	60	1.8	1.56	-	200	250	16	120	Y	SO-8
ZXMS6005DT8	60	1.8	2.13	-	200	250	24	210	Y	SM-8
ZXMS6006DT8	60	2.8	2.13	-	100	125	16	210	Y	SM-8

IntelliFET is a registered trademark of Diodes Incorporated.

IntelliFET SELF-PROTECTED MOSFET

Diodes incorporated designs, develops and manufactures a range of self-protected MOSFETs that provide general purpose switching.

These are especially suited for loads with high in-rush current such as found in inductive circuits.

Switching all types of resistive, inductive and capacitive loads, these devices feature overtemperature, overvoltage, and overcurrent protection enabling circuit designers to dramatically increase reliability.

The Diodes IntelliFET portfolio is packaged in SOT23F, SOT223, SM8, SO-8 and TO252-5 .



THE DIODES ADVANTAGE

- **Overvoltage, Over-Temperature and Overcurrent Protection**
Improved robustness and reliability for harsh environment.
- **Low $R_{DS(ON)}$**
Low $R_{DS(ON)}$ minimizes the conduction losses through the device.
- **3V and 5.5V Inputs**
IntelliFET portfolio can be driven directly from a microcontroller.



CORPORATE HEADQUARTERS AND AMERICAS SALES OFFICE

4949 Hedgcoxe Road
Suite 200
Plano, Texas 75024, USA
Tel: (+1) 972-987-3900
Email: inquiries@diodes.com

SILICON VALLEY OFFICE

1545 Barber Lane
Milpitas, California 95035, USA
Tel: (+1) 408-232-9100

EUROPE SALES OFFICE

Kustermann-Park
Balanstrasse 59, 8th Floor
D-81541 Munchen, Germany
Tel: (+49) 89-45-49-49-0
Email: inquiries-europe@diodes.com

ASIA SALES OFFICES

Email: inquiries-asia@diodes.com

DIODES-CHINA

SHANGHAI OFFICE

Room 3001-3002,
International Corporate City,
No. 3000 Zhongshan North Road,
Shanghai 200063, China
Tel: (+86) 21-5241-4882

SHENZHEN OFFICE

16th Floor Skyworth Semiconductor
Design Building East Wing,
No.18 Gaoxin South 4th Road,
Nanshan District,
Shenzhen 518057, China
Tel: (+86) 755-8828-4988

DIODES-JAPAN

8F Humax Ebisu Bldg
1-1-1 Ebisu-Minami, Shibuya-ku
Tokyo 150-0022, Japan
Tel: (+81) 3-6871-9388

DIODES-KOREA

1601 ho, ParkView Tower
Jeongja 1 dong,
Bundang-gu, Seongnam-si,
Gyeonggi-do 463-811, Korea
Tel: (+82) 31-786-0434

DIODES-TAIWAN

7F, No. 50, Min-Chuan Road
Hsin-Tien District
New Taipei City 23141,
Taiwan, R.O.C.
Tel: (+886) 2-8914-6000

For further information please visit www.diodes.com/contact-us



For information or literature, please visit www.diodes.com/contact-us

January 2021